



Station Road, Ardleigh  
£400,000



## Station Road

Discover this charming three-bedroom, semi-detached home, perfect for first-time buyers or growing families seeking a blend of village tranquillity and convenient access to nearby towns. This pristine property, built in 2018, boasts an impeccable design maintained to a lovely standard, ensuring you can move in without the fuss of immediate improvements.

Upon entering, you are greeted by a welcoming entrance porch, ideal for storing outerwear. The heart of this home is the open-plan living area, elegantly divided into a cosy living room with a feature log burner and media wall, and a stylish kitchen diner, complete with integrated appliances.

The practical utility room, leading out to the garden, and a discreet downstairs WC, add to the ground floor's convenience.

Upstairs, the allure continues with three well-proportioned bedrooms. The principal bedroom is a true sanctuary, offering built-in wardrobes and a sleek en-suite shower room. The family bathroom serves the additional bedrooms with equal style and function.

The rear garden, a treasure within itself, presents a purpose-built, insulated outbuilding, currently fashioned as a popular bar/pub, but equally suitable as a home office or extra living space. With off-road parking and a single garage to the rear, this home caters to all practicalities whilst providing an escape from the everyday hustle.







- GUIDE PRICE £375,000 - £400,000
- SINGLE GARAGE AND OFF ROAD PARKING
- OUTBUILDING - CURRENTLY USED AS A BAR
- EN-SUITE SHOWER ROOM TO BEDROOM ONE
- KITCHEN DINING ROOM
- UTILITY ROOM

#### LOCATION:

Convenience is never far away, as Ardleigh boasts a range of amenities intended to make day-to-day life a breeze. A highly regarded primary school within the village nurtures young minds, complemented by a reliable post office, doctors surgery, a local shop, and a delightful Chinese takeaway restaurant. Additionally, The Wooden Fender, a popular eatery and pub, offers a warm, convivial atmosphere for dining and socialising.

For those inclined towards a nautical pursuit, Ardleigh Sailing Club, situated on a sprawling 136-acre water haven, extends a warm invitation. An established and friendly club, it provides unparalleled facilities for racing, training, or simply cruising, making it an ideal spot to embrace the joys of sailing.



For a change of scene, the idyllic medieval village of Dedham beckons, a mere 2.7 miles away. A fascinating assortment of restaurants, local shops, and amenities heighten your quality of life, while delightful strolls along the banks of the River Stour endorse a peaceful backdrop. For ease of travel, nearby railway stations can be found in the welcoming towns of Manningtree and Colchester, approximately 4.4 and 4.9 miles away, respectively. Colchester itself presents a notable array of shops, restaurants, social facilities, and esteemed schools, most notably the esteemed Colchester Royal Grammar School.

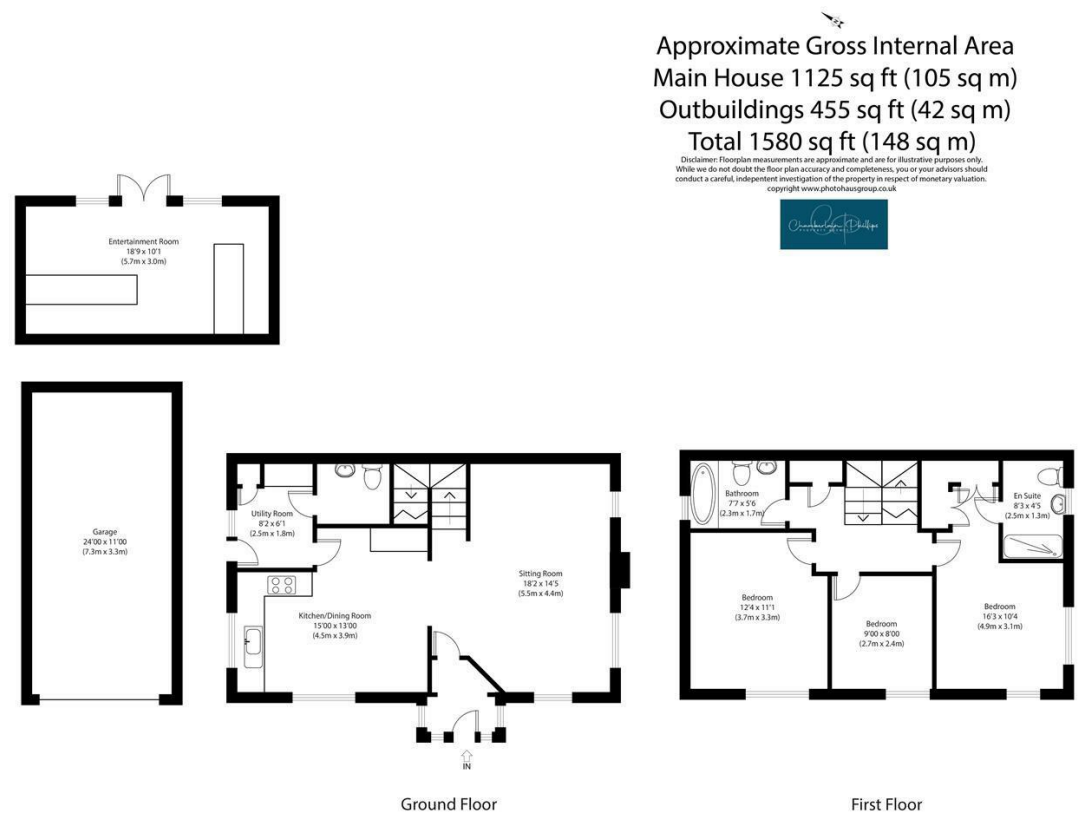
#### Agents Notes:

Tenure - Freehold  
Council Tax Band - D  
Services - Mains Gas, Electric, Mains Water & Drainage  
Heating - Gas underfloor to ground floor / Radiators to first floor  
Mobile Coverage Indoor: All networks are available  
Broadband: Ultrafast broadband is available at this address  
There is a management charge currently payable at £125.00 paid every 6 months (£250.00 per annum)





Floor Plan



Viewing

Please contact our Chamberlain Phillips Manningtree Office on 01206 646479 if you wish to arrange a viewing appointment for this property or require further information.

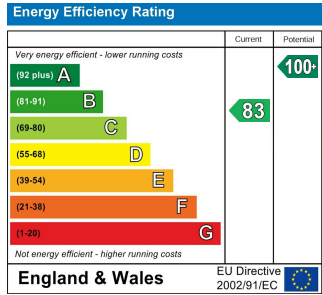
These particulars, whilst believed to be accurate are set out as a general outline only for guidance and do not constitute any part of an offer or contract. Intending purchasers should not rely on them as statements of representation of fact, but must satisfy themselves by inspection or otherwise as to their accuracy. No person in this firms employment has the authority to make or give any representation or warranty in respect of the property.

6 Dairy Barn Mews, Summers Park, Lawford, Manningtree, Essex, CO11 2BZ  
Tel: 01206 646479 Email: [info@chamberlainphillips.co.uk](mailto:info@chamberlainphillips.co.uk) [www.chamberlainphillips.co.uk](http://www.chamberlainphillips.co.uk)

Area Map



Energy Efficiency Graph



Council Tax Band - D

Tenure - Freehold