



TK International
020 7794 8700
www.t-k.co.uk

Residential Sales
Residential Lettings
Property Management

Sales Office:
9 Heath Street
Hampstead
London NW3 6TP
E: sales@t-k.co.uk

Lettings Office:
16-18 Heath Street
Hampstead
London NW3 6TE
E: lettings@t-k.co.uk

tk.international
TK International
TK International

Est.
1998



West Heath Road Hampstead NW3

A spectacular low-built detached house, offered in excellent condition and set back from the road behind electronic gates.

This lateral home boasts excellent ground floor entertaining space by way of a 28' reception room with vaulted ceiling, separate dining area and a kitchen/breakfast room which leads to the family room with access to the beautiful and well maintained garden. In addition, the ground floor also enjoys a large double bedroom, study/bedroom, 4 separate bathroom, guest WC and second courtyard garden.

The first floor provides the principal bedroom with en-suite bathroom and dressing room, plus there is the third bedroom with en-suite bathroom and a galleried library area overlooking the main reception room.

This wonderful home also enjoys a home gym, cinema room and plenty of storage on the lower ground floor, as well a single lock up garage and additional secure parking for 3-4 cars on the drive.

Conveniently situated within less than a mile's walk to both Hampstead Village and Golders Green, and the wide choices of shops, cafes, transport facilities (Northern Line) and the huge open expanses of both Hampstead Heath and Golders Hill Park.

£6,495,000

SOLE AGENT

Freehold





















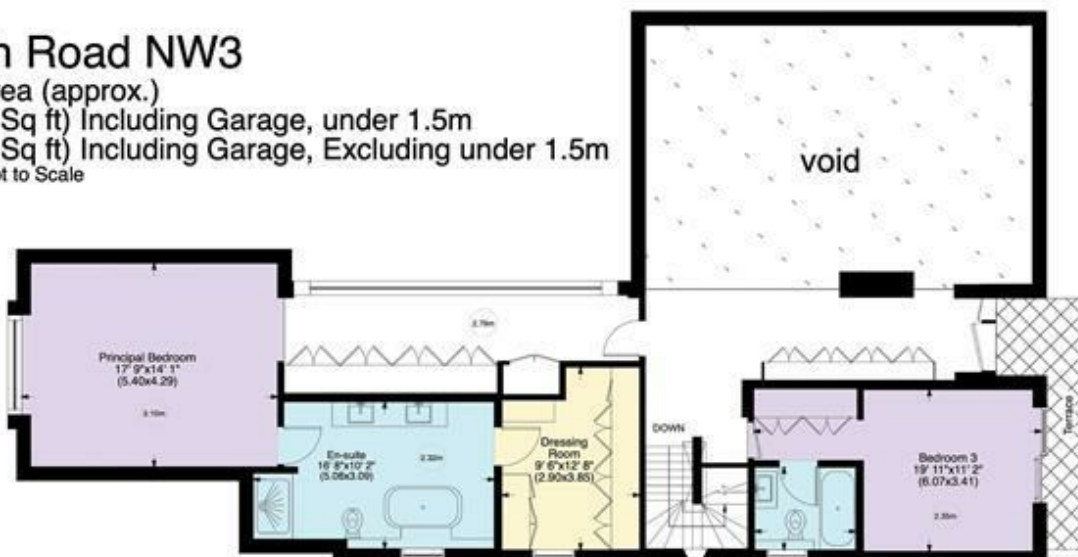
West Heath Road NW3

Gross internal area (approx.)

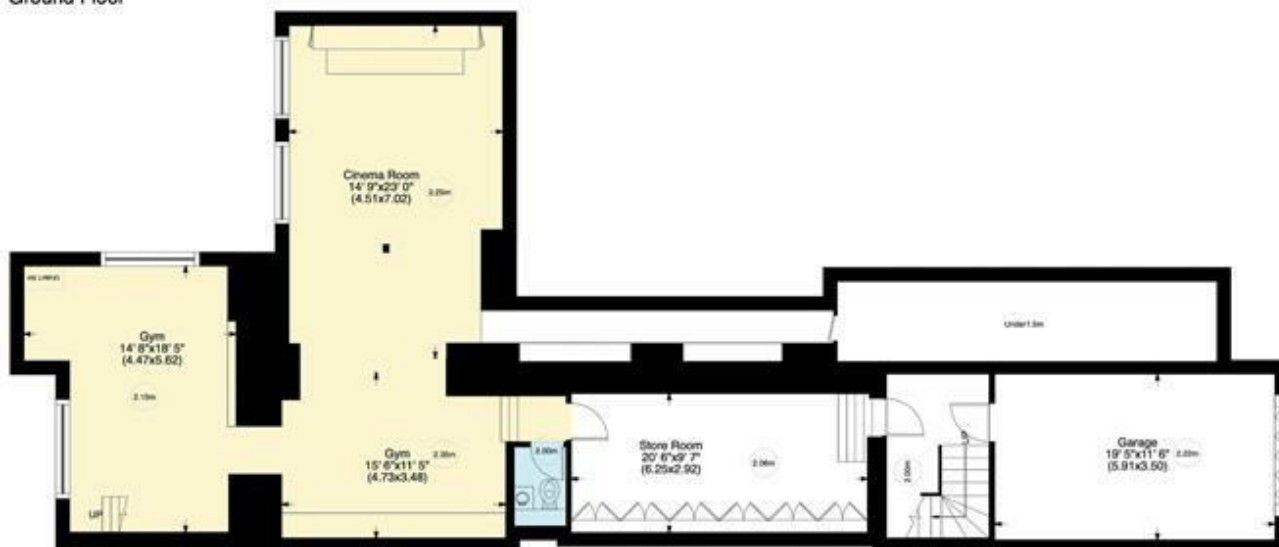
485 Sq m (5223 Sq ft) Including Garage, under 1.5m

468 Sq m (5039 Sq ft) Including Garage, Excluding under 1.5m

For identification only, Not to Scale



Ground Floor



Lower Ground Floor

www.WilliamSalisbury.Photography

Not to Scale, for guidance only and must not be relied upon as a statement to fact. All measurements areas are approximate only (and have been prepared in accordance with the current edition of the RICS Code of Measuring Practice).

West Heath Road NW3

Acre 0.167 (approx.)

For identification only, Not to Scale



www.WilliamSalisbury.Photography

Not to Scale, for guidance only and must not be relied upon as a statement to fact. All measurements areas are approximate only (and have been prepared in accordance with the current edition of the RICS Code of Measuring Practice).