



Whittlesey Road, Benwick PE15 0XJ

welcome to

Whittlesey Road, Benwick

Rural Life for Me ? Detached House - Five Bedrooms - Three Bathrooms - Kitchen / Breakfast Room - Conservatory - Viewing Recommended



Entrance Door

to

Hall

Stairs leading off. Door to lounge.

Living Room

Window to front. Two windows to side. Laminate floor. Feature fireplace with brick hearth and wood mantel. Two radiators. Door to kitchen.

Kitchen / Breakfast Room

Window to side. Window to rear. French doors to conservatory. Two radiators. Oil fired central heating boiler. Tiled floor. Breakfast bar. Range cooker with cooker hood above. Single drainer sink with mixer taps, 1 1/4 bowl. Larder unit. Integrated dishwasher. Wall units with matching work surfaces and storage under.

Dining Area

Open plan to Study area. Window to front. Radiator. Feature fireplace with wood mantel. Laminate floor.

Office Area

Window to rear. Window to side. Open plan to Dining Area

Ground Floor Shower Room

Shower cubicle. Vanity wash hand basin. Low level w.c. Tiled floor. Extractor fan.

Conservatory

Tiled floor. Doors to garden. Radiator. TV point. Air conditioning unit.

Bedroom One

Window to front. Feature fireplace with laminate floor. Radiator. Integral wardrobe.

Bedroom Two

Window to front. Radiator. Laminate floor. Feature fireplace. TV point.

Bedroom Three

Window to rear. Radiator.

Bedroom Four

Window to side. Radiator.

En Suite

Shower cubicle. Skylight. Radiator. Tiled floor. Low level w.c. Wash hand basin.

Bedroom Five

Window to side. Radiator. Loft access.

Bathroom

Window to side. Heated towel rail. Low level w.c. Tiled floor. Slipper bath. Vanity wash hand basin with storage under. Tiled floor.

Outside

Front garden is hedged, laid to grass with mature trees and shrubs inset. Outside tap.

There is also a side garden which is laid to grass.



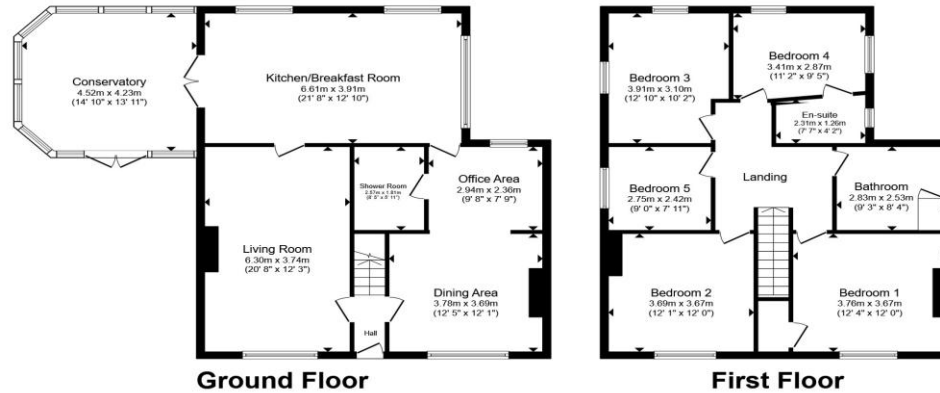
view this property online williamhbrown.co.uk/Property/MCH114818



welcome to Whittlesey Road, Benwick

- Detached House
- Five Bedrooms
- Three Bathrooms
- Kitchen / Breakfast Room
- Conservatory
- Rural Location

Tenure: Freehold
EPC Rating: D
Council Tax Band: D



£450,000

Total floor area 182.9 m² (1,969 sq.ft.) approx
This floor plan is for illustrative purposes only. It is not drawn to scale. Any measurements, floor areas (including any total floor area), openings and orientation are approximate. No details are guaranteed, they cannot be relied upon for any purpose and they do not form part of any agreement. No liability is taken for any error, omission or misstatement. A party must rely upon its own inspection(s). Powered by www.propertybox.io



Please note the marker reflects the postcode not the actual property

view this property online williamhbrown.co.uk/Property/MCH114818



Property Ref:
MCH114818 - 0002

1. MONEY LAUNDERING REGULATIONS Intending purchasers will be asked to produce identification documentation at a later stage and we would ask for your co-operation in order that there is no delay in agreeing the sale. 2. These particulars do not constitute part or all of an offer or contract. 3. The measurements indicated are supplied for guidance only and as such must be considered incorrect. Potential buyers are advised to recheck measurements before committing to any expense. 4. We have not tested any apparatus, equipment, fixtures or services and it is in the buyers interest to check the working condition of any appliances. 5. Where an EPC, or a Home Report (Scotland only) is held for this property, it is available for inspection at the branch by appointment. If you require a printed version of a Home Report, you will need to pay a reasonable production charge reflecting printing and other costs. 6. We are not able to offer an opinion either written or verbal on the content of these reports and this must be obtained from your legal representative. 7. Whilst we take care in preparing these reports, a buyer should ensure that his/her legal representative confirms as soon as possible all matters relating to title including the extent and boundaries of the property and other important matters before exchange of contracts.



01354 654545



march@williamhbrown.co.uk



34 High Street, MARCH, Cambridgeshire, PE15 9JR



williamhbrown.co.uk