



## Woodland Way, KT5

£499,950

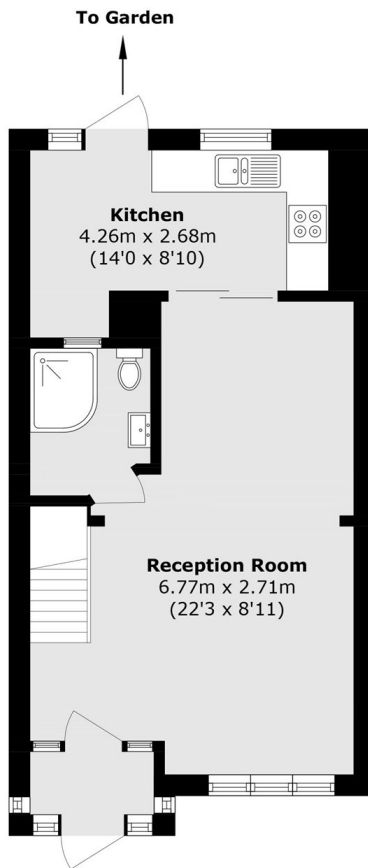
This well presented terrace home includes a separate kitchen, a large through reception room, seamlessly combining dining and living space together, three bright and spacious bedrooms and a large landscaped rear garden. This property also benefits from a driveway and two bathrooms.

Woodland Way has easy access to the A3 and is conveniently less than half a mile away from Tolworth train station and a vast selection of local shops, bars and restaurants.

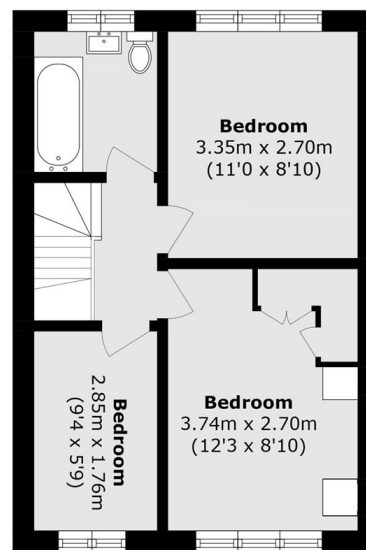
### Features

- Mid Terrace
- Off Street Parking
- Three Bedrooms
- Two Bathrooms
- Great Condition
- Private Garden

# Woodland Way, Surbiton, KT5



**Ground Floor**



**First Floor**

Total area (approx.): 75.1 sq. m (808.3 sq. ft)