



PUTTERILLS

— est. 1992 —

Attimore Close, Welwyn Garden City, AL8 6LN
Guide Price £550,000

PROPERTY SUMMARY

Set within a sought-after Welwyn Garden City close, this attractive end-of-terrace home blends period character with modern finishes.

The property offers a cosy reception room with fireplace and a stylish kitchen-diner with integrated appliances and garden access. The generous rear garden features a lawn, vegetable beds, and a versatile garden room ideal as a home office or studio.

Further benefits include a recently replaced roof. Ideally located close to open space, the town centre, station with fast links to London, and highly regarded schools including Applecroft Primary and Stanborough Secondary.

3



1

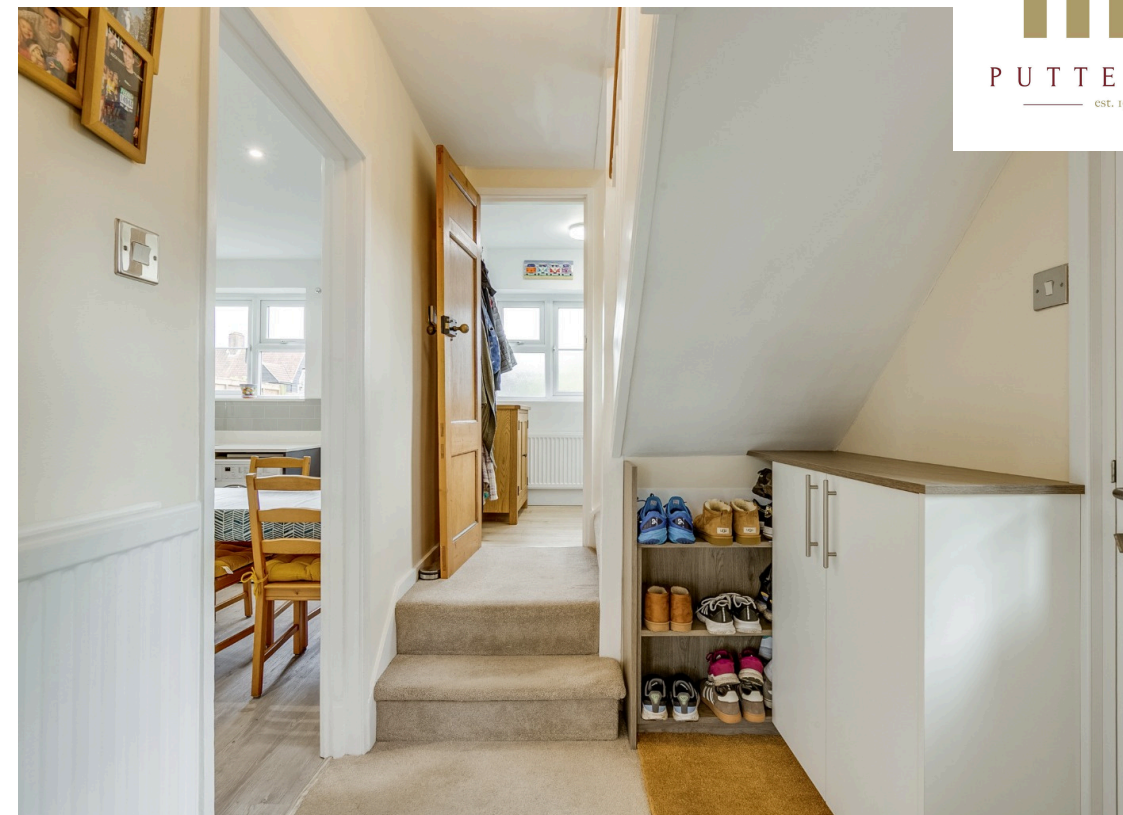


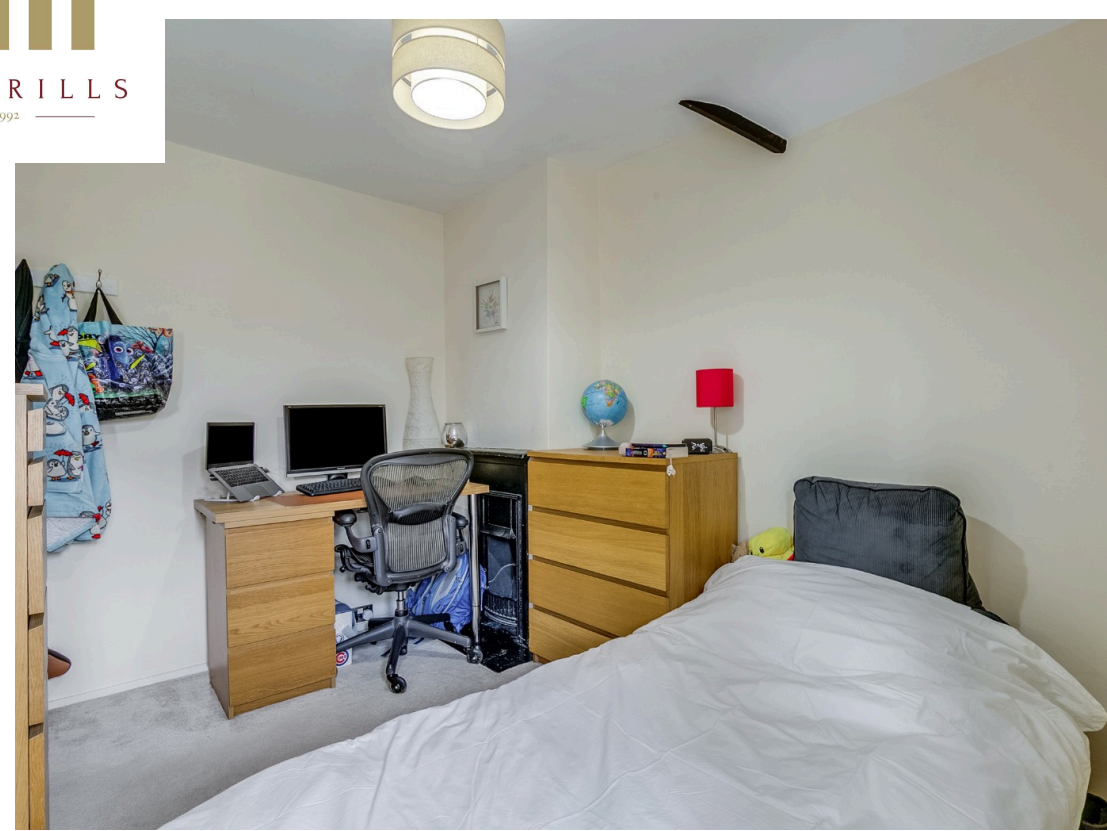
1

















LOCAL AUTHORITY
Welwyn Hatfield

TENURE Freehold

COUNCIL TAX BAND
D

VIEWINGS

By prior appointment only

Attimore Close, AL8

Approximate Area = 91.97 sq m / 990 sq ft
(Including Garden Office & Shed)

Garden Office & Shed Area = 15.79 sq m / 170 sq ft

(Not shown in actual
location / orientation)

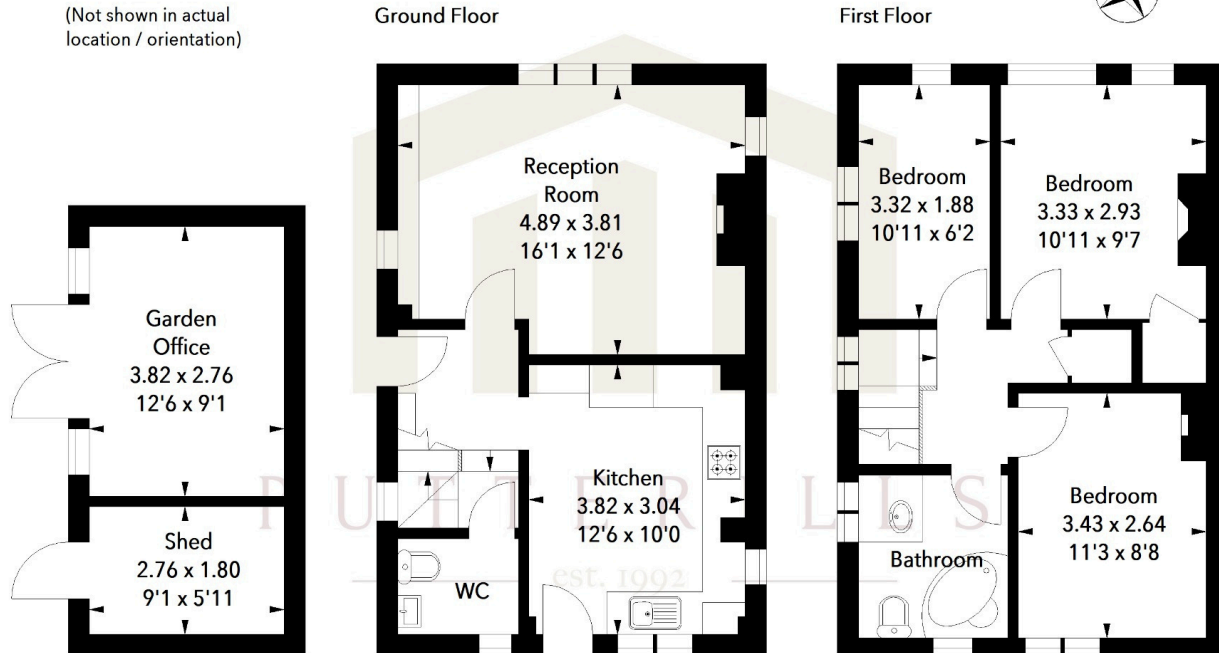


Illustration For Identification Purposes Only.

All measurements and areas are approximate, not to scale.

© Orange Tree Photography

Score	Energy rating	Current	Potential
92+	A		
81-91	B		
69-80	C		78 C
55-68	D	64 D	
39-54	E		
21-38	F		
1-20	G		

Agents Note: Whilst every care has been taken to prepare these particulars, they are for guidance purposes only. All measurements are approximate and are for general guidance purposes only and whilst every care has been taken to ensure their accuracy, they should not be relied upon and potential buyers/tenants are advised to recheck the measurements

OFFICE ADDRESS

34 Wigmores North
Welwyn Garden
City
Hertfordshire
AL8 6PH

CONTACT DETAILS

01707 393333
wgc@putterills.co.uk
www.putterills.co.uk

