



## Millway, Mill Hill, NW7

**£765,000**

Fantastic Four-Bedroom Semi-Detached Home Just Steps from Mill Hill Broadway. Nestled on one of Mill Hill's most desirable tree-lined streets, this attractive four-bedroom semi-detached family home is ideally located just moments away from the vibrant shops, cafés, and transport links of Mill Hill Broadway.

The property offers a well-balanced layout ideal for modern family living. The ground floor comprises a generous reception room, a separate dining area, and a well-sized kitchen—providing flexible spaces for both relaxing and entertaining. Upstairs, the first floor includes three comfortable bedrooms, a family bathroom, and a separate WC. A large fourth double bedroom occupies the top floor, perfect as a master suite or guest accommodation.

With clear potential for extension or redevelopment (subject to planning permissions), this home offers scope to personalise and expand in line with your future aspirations.

Outside, a sizeable private garden provides an excellent setting for outdoor gatherings or children's play, while off-street parking adds everyday convenience. Chain Free. Probate Sale.

- 4 BEDROOMS
- SPACIOUS RECEPTION ROOM
- BRIGHT DINING ROOM
- IN NEED OF UPDATING
- POTENTIAL TO EXTEND STPP
- CLOSE TO LOCAL SCHOOLS
- STONES THROW TO MILL HILL BROADWAY

### Viewing

Please contact our Mill Hill Office on 02089590011 if you wish to arrange a viewing appointment for this property or require further information.



4



1



2



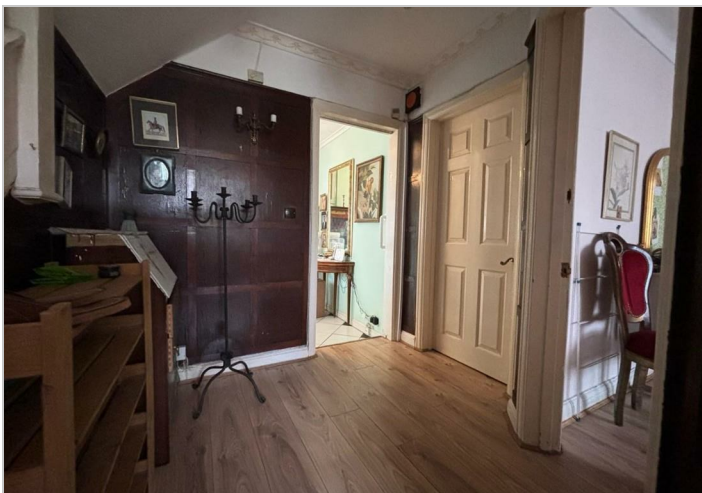
## Floor Plan



## Area Map



## Energy Efficiency Graph



These particulars, whilst believed to be accurate are set out as a general outline only for guidance and do not constitute any part of an offer or contract. Intending purchasers should not rely on them as statements of representation of fact, but must satisfy themselves by inspection or otherwise as to their accuracy. No person in this firm's employment has the authority to make or give any representation or warranty in respect of the property.