



Colville Terrace, W11

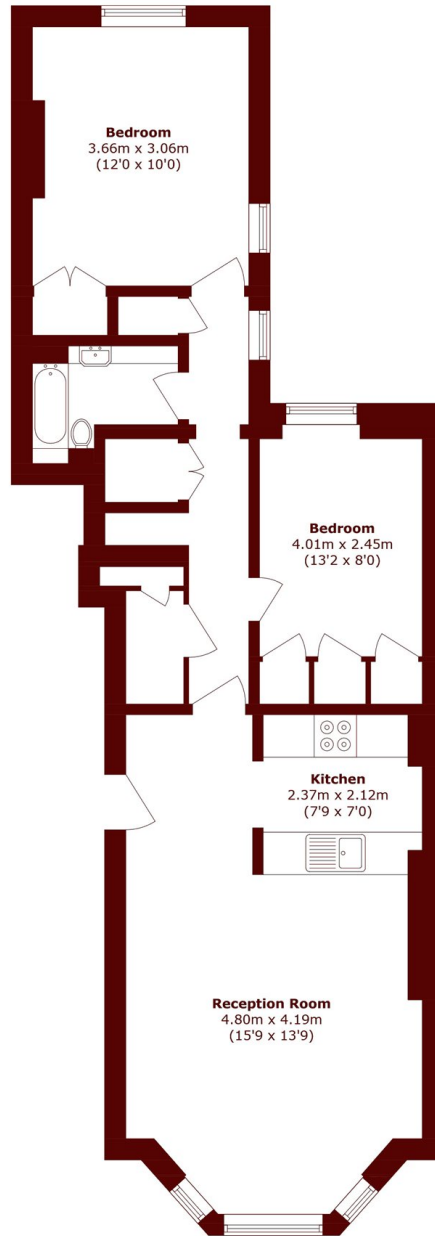
£1,000,000



- Raised Ground Floor
- Two Double Bedrooms

- Share Of Freehold
- No Onward Chain

- Fantastic Location
- High Ceilings



Total area (approx.): 63.4 sq. m (682.4 sq. ft)

Marsh & Parsons Notting Hill

2-6 Kensington Park Road,
London, W11 3BU
020 7313 2890