



## 38 Waveney Valley Holiday Village

Burgh Castle, Great Yarmouth, NR31 9FN

Offers Over £80,000



## 38 Waveney Valley

Burgh Castle, Great Yarmouth, NR31 9FN

A fantastic extended, spacious three bedroom end terrace holiday chalet with driveway. The property has an amazing kitchen/diner, lounge, ensuite cloakroom and shower room. LPG gas central heating and sealed unit double glazing. Communal gardens. The property is offered with no onward chain.

### Kitchen/Diner

17'9" max x 13'1" max( max x max) (5.41 max x 3.99 max(5.42 max x max))

Double glazed patio doors to front, double glazed window to rear aspect, wall mounted LPG gas boiler in storage cupboard, base & wall units with worktops, stainless steel sink with drainer, electric cooker point.

### Lounge

11'0" x 10'6" (3.35 x 3.20)

Double glazed window to front aspect, radiator, door to:-

### Bedroom 3

10'6" x 7'9" (3.20 x 2.36)

Double glazed window to rear aspect, radiator.

### Master Bedroom

8'2" x 7'10" (2.49 x 2.39)

Built in wardrobes, double glazed window to rear aspect, radiator, door to:-

### Ensuite

Low level WC, hand basin.

### Bedroom 2

Built in wardrobes, double glazed window to front aspect.

### Lobby

### Shower Room

Shower in cubicle, hand basin, low level WC, part tiled walls, opaque double glazed window to rear aspect, heated towel rail.





### Outside

Driveway to front, communal gardens

### Tenure

Freehold.

Occupation – 1st February - 30th November.

Service charge approx. £1300 annually.

### Council Tax

Great Yarmouth Borough Council - Band A

### Location

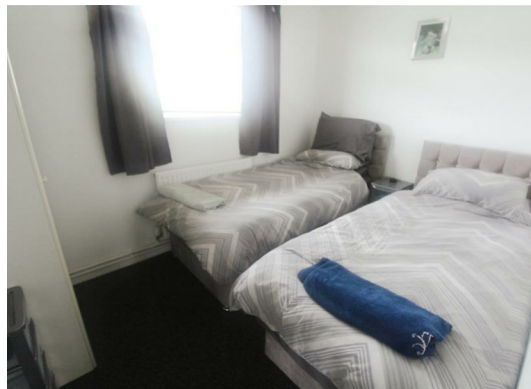
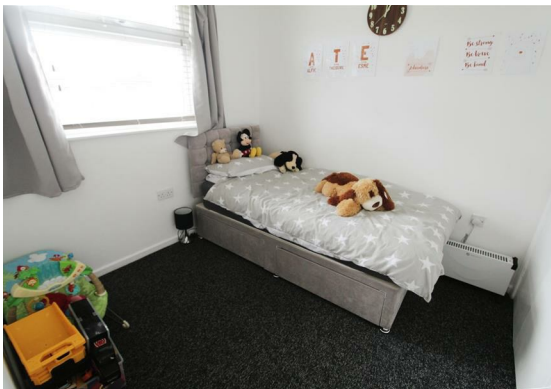
Burgh Castle is a semi rural village 2 miles west of Gorleston and 4 miles from Great Yarmouth \* The River Waveney and Breydon Water are on the outskirts of the village giving access to the Norfolk and Suffolk Broads \* There is a yacht marina and historic Roman Castle ruins.

### Directions

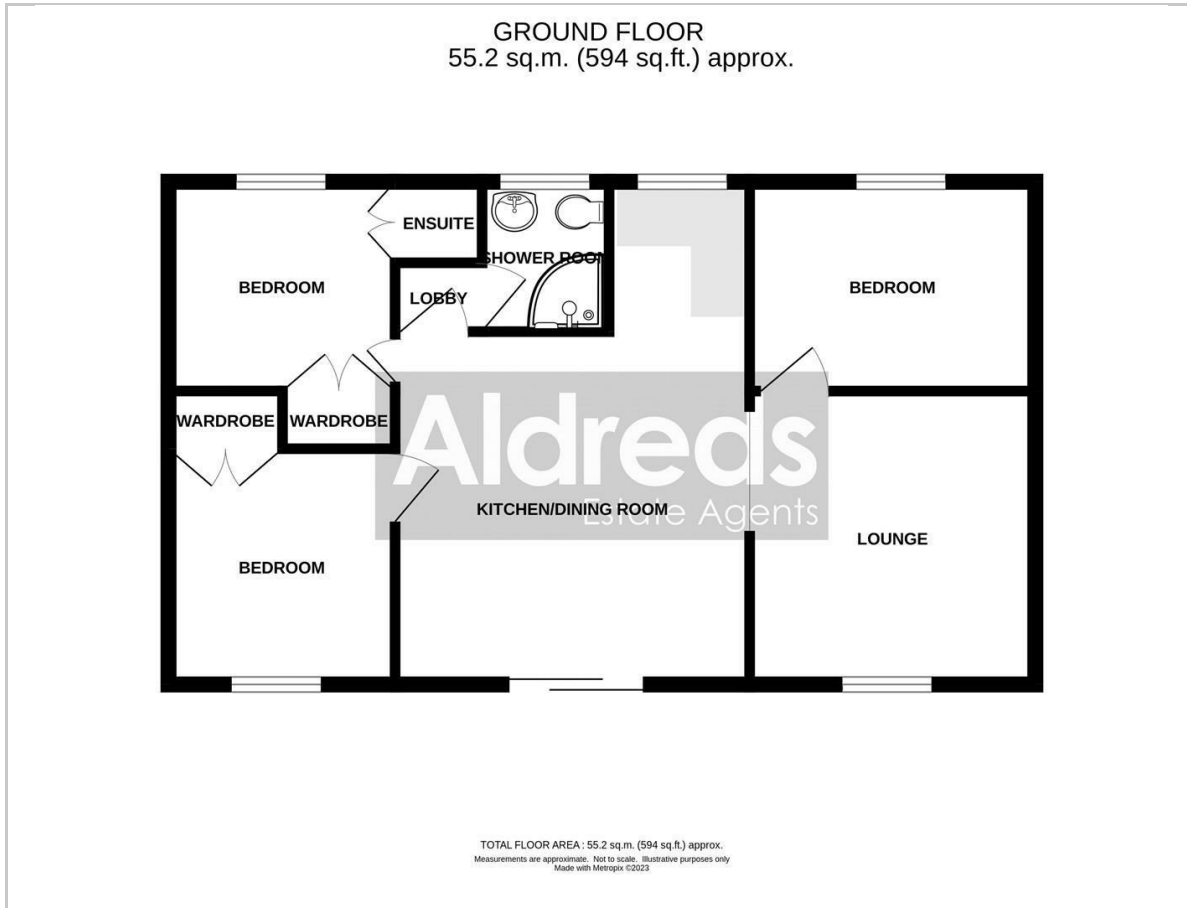
Leave Gorleston on the A143 Beccles Road, continue through Bradwell, turn right at the roundabout into New Road, continue into Belton, at the mini roundabout turn right into Stepshort, continue into Burgh Castle, continue into Butt Lane, turn left into Waveney Valley Holiday Village

EPC - E (42)

Ref: G17823/03/23



## Floor Plan



## Viewing

Please contact our Aldreds Gorleston Office on 01493 664600 if you wish to arrange a viewing appointment for this property or require further information.

### Disclaimer

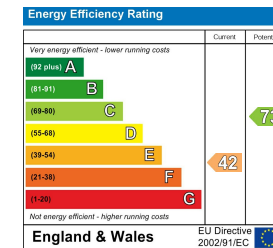
These particulars are issued on an understanding that all negotiations shall be conducted through Messrs. Aldreds. Please note: Messrs. Aldreds for themselves and for the vendors or lessors of this property whose agents they are given notice that: 1. Particulars are set out as a general outline only for guidance of intending purchasers or lessees, and do not constitute nor constitute part of, an offer or contract. 2. All descriptions, dimensions, references to condition and necessary permissions for use and occupation, and other details are given without responsibility and any intending purchasers or tenants should not rely on them as statements or representations of fact but must satisfy themselves by inspection or otherwise as to the correctness of each of them. 3. No person in the employment of Messrs. Aldreds has any authority to make or give any representation or warranty whatever in relation to this property. 4. If you are proposing to visit the property and are travelling some distance please check with Aldreds on the issue of availability prior to travelling. 5. Aldreds Property Consultants and associated services may offer additional services to the prospective purchaser for which they will be entitled to receive a commission.

Aldreds are pleased to be working with Mortgage Advice Bureau. They're an award-winning mortgage broker with over 1,400 advisers across the UK, and have access to over 12,000 mortgage products from over 90 lenders. Aldreds Estate Agents Ltd receive a commission of £200 on each completed case. Your home may be repossessed if you do not keep up repayments on your mortgage. There may be a fee for mortgage advice. The actual amount you pay will depend upon your circumstances. The fee is up to 1%, but a typical fee is 0.3% of the amount borrowed. Mortgage Advice Bureau is a trading name of Mortgage Seeker Limited which is an appointed representative of Mortgage Advice Bureau Limited and Mortgage Advice Bureau (Derby) Limited which are authorised and regulated by the Financial Conduct Authority. Mortgage Seeker Limited Registered Office: Lovewell Blake, Sixty Six North Quay, Great Yarmouth, Norfolk, NR30 1HE. Registered in England Number: 03721415. 6. Potential purchasers should check with their providers that the broadband and mobile phone coverage they would require is available.

## Area Map



## Energy Efficiency Graph



149 High Street, Gorleston, Norfolk, NR31 6RB

Tel: 01493 664600 Email: [gorleston@aldreds.co.uk](mailto:gorleston@aldreds.co.uk) <https://www.aldreds.co.uk/>

Registered in England Reg. No. 08945751 Registered Office: 17 Hall Quay, Great Yarmouth, Norfolk NR30 1HJ

Directors: Mark Duffield B.S.c. FRICS. Dan Crawley MNAEA Paul Lambert MNAEA