



Avonmore Gardens, W14

£3,450 Per calendar month

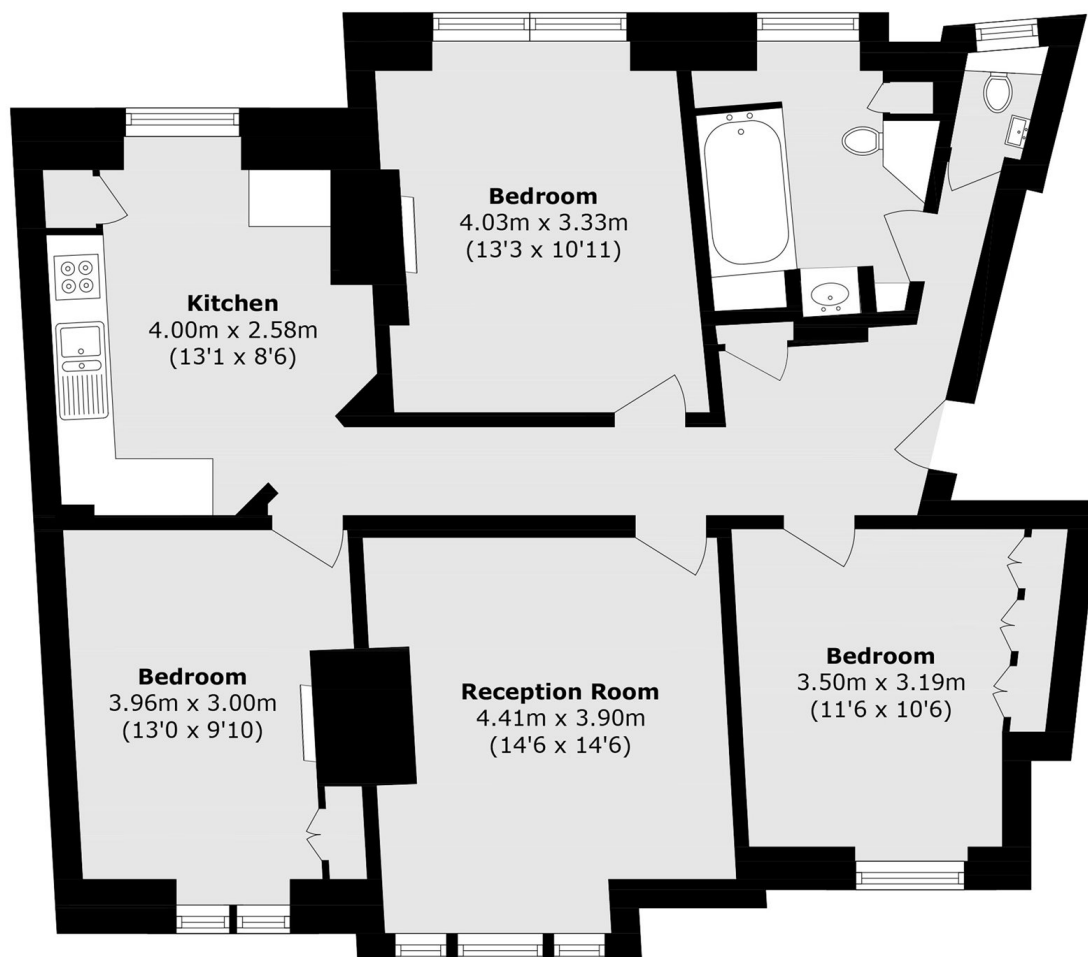
This three double bedroom property on the first floor of a sought after Mansion Block offers great proportions throughout, with a separate kitchen, living room and additional WC. This property is ideal for a family or professional sharers.

Avonmore Gardens is close to all the transport links, shops, cafés, bars and restaurants in Kensington Olympia, West Kensington, High Street Kensington and Hammersmith.

Features

- Three Double Bedrooms
- First Floor Property
- Mansion Block
- Bathroom and Separate WC
- Separate Kitchen
- HMO Licence

Avonmore Gardens, London, W14



First Floor

Total area (approx.): 86.0 sq. m (925.7 sq. ft)