



Elmfield Road, SW17

£2,750 Per calendar month

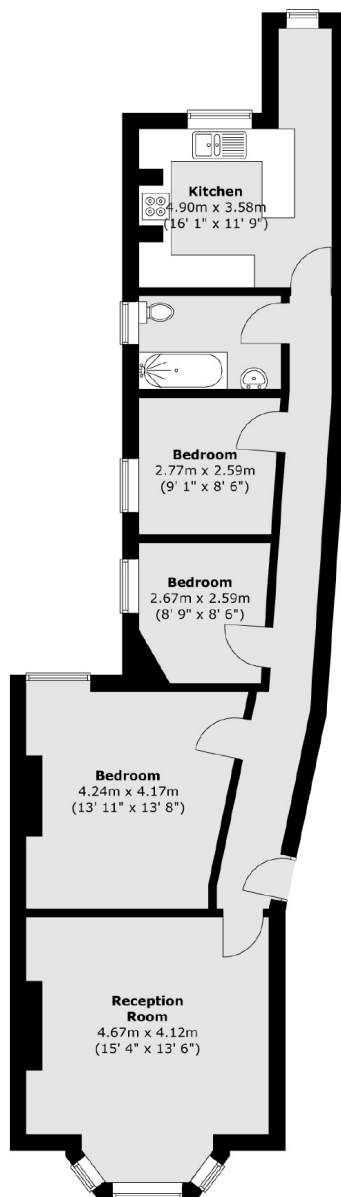
A spacious three bedroom flat situated on the ground floor of a mansion block on Elmfield Road. The property includes a large reception room with dining area, a separate kitchen, one bathroom as well as access to a communal garden.

Elmfield Road is ideally located for the many amenities Balham has to offer. Balham train and tube station is only moments away, as are many local bars, restaurants, supermarkets and leisure facilities.

Features

- Mansion Block
- Three Bedrooms
- Ground Floor Flat
- Spacious Reception
- Communal Garden
- Great Location

Elmfield Road, London, SW17



Total area (approx.) : 82.3 sq. m (886 sq. ft)

Dexters

Clapham South & Balham
9 Cavendish Parade
London
SW4 9DP
Lettings
0208 675 6750

Energy Rating: D. We aim to make our particulars both accurate and reliable. However they are not guaranteed; nor do they form part of an offer or contract. If you require clarification on any points then please contact us, especially if you're traveling some distance to view. Please note that appliances and heating systems have not been tested and therefore no warranties can be given as to their good working order.

 **RICS** | Regulated
Estate Agent
and Letting Agent

[dexters.co.uk](https://www.dexters.co.uk)