

JK CapInvest



OIEO £1,500,000

Marylebone

Upper Berkeley Street

London, W1H

KEY FEATURES

- Long Lease
- 1,053 sq. ft
- EPC Rating: C
- Portered
- Lift
- Local Authority: Westminster
- Council Tax Band: G

JK Prime Residential

Phone:
+44 (0) 7392 282 397

Email:
sales@jkcainvest.com



ABOUT

Two Generous
Bedrooms (one
Ensuite)

Third Study Room

Concierge

Lift

Pet Friendly

5 mins walk to
Portman Square

6 min to Oxford
Street & Hyde Park
& Selfridges

Between
Paddington and
Marylebone



THE PROPERTY

Well-proportioned and bright three-bedroom apartment situated on the third floor of this block on Upper Berkeley St. The block has a concierge and a lift.

Three bedrooms (two large bedrooms, one ensuite bathroom and a third bedroom/ study room), a second bathroom, a large reception area (living room/ dining room), and a fully equipped kitchen complete this home.

Located between Marylebone and Paddington, this property is well situated for easy access to public transportation. The vibrant shops and restaurants of Seymour Street, Wigmore Street and Oxford Street add to the convenience of this location.



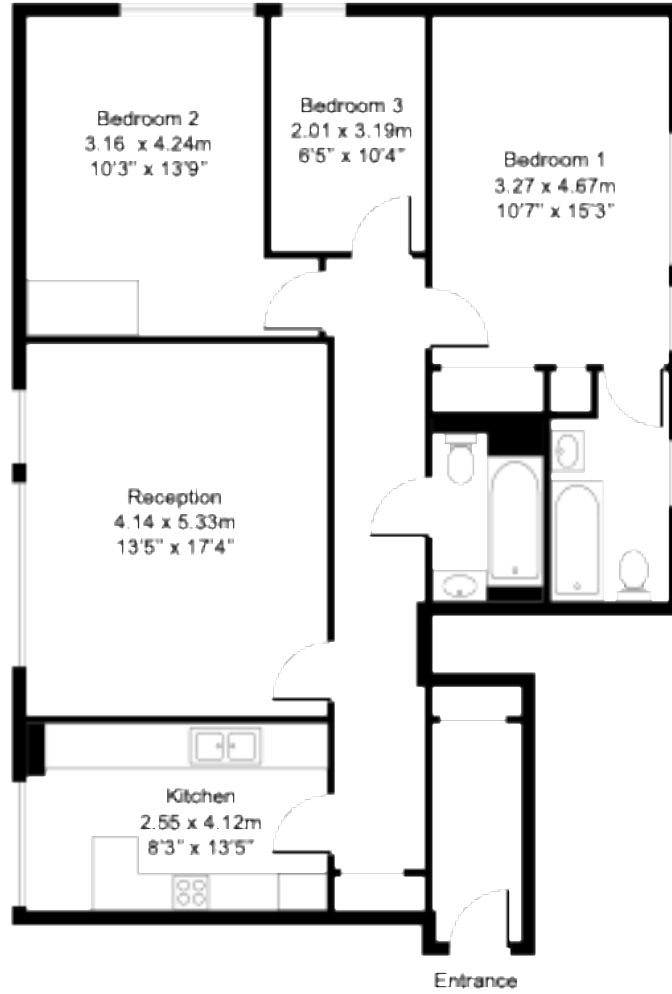
sales@jkcainvest.com

+44 (0) 7392 282 397

Viewing: Strictly by appointment with JK CapInvest Ltd.

Important Notice: Any areas, measurements or distances are approximate. The text, photographs and plans are for guidance only and are not necessarily comprehensive.

Approx. Gross Floor Area =97 sq.meters 1053 sq.feet



THIRD FLOOR

For Illustrative Purposes - Not To Scale



sales@jkcapinvest.com

+44 (0) 7392 282 397

Viewing: Strictly by appointment with JK CapInvest Ltd.

Important Notice: *Any areas, measurements or distances are approximate. The text, photographs and plans are for guidance only and are not necessarily comprehensive.*