



**CORNTOP, 4 MOOR END COTTAGES, FRIETH**  
**PRICE: £875,000 FREEHOLD**

**am** ANDREW  
MILSON

**CORNTOP  
4 MOOR END COTTAGES  
FRIETH  
HENLEY-ON-THAMES  
OXON RG9 6PT**

**PRICE: £875,000 FREEHOLD**

Set in the sought after village of Frieth, four miles north of Marlow, a charming three bedroom Victorian semi detached three storey home with delightful views over farmland.

**LARGE PRIVATE SOUTH FACING REAR GARDEN:**

**THREE BEDROOMS: SHOWER ROOM:**

**USEFUL LOFT ROOM: CLOAKROOM:**

**LIVING ROOM WITH FEATURE**

**FIREPLACE: KITCHEN/DINER:**

**STUDY/GARDEN ROOM: TIMBER GARAGE:**

**DOUBLE GLAZING: GATED DRIVEWAY**

**PARKING. OIL FIRED CENTRAL HEATING.**

**TO BE SOLD:** this lovely three bedroom character home provides well kept and tastefully presented living accommodation over three floors with stunning far reaching views over farmland and open countryside located in this popular Chiltern village. Frieth has a thriving community enhanced by two public houses, an Anglican Church and well thought of primary school rate by OFSTED as 'good. Nearby are superb walks and rides whilst Marlow offers High Street shops and restaurants, sports and social facilities and excellent Co-educational Grammar and Secondary schooling. Fast trains to Marylebone, London are available from nearby High Wycombe and to Paddington from Maidenhead. The M40 and M4 are accessible at High Wycombe and Maidenhead respectively. The accommodation comprises:



**LIVING ROOM** a dual aspect room with feature fireplace with inset cast iron log burner, radiators, stairs to first floor with cupboard under, luxury vinyl flooring. Door to

**STUDY** with double glazed windows, door to garden and door to

**CLOAKROOM** comprising low level wc, wash hand basin, radiator.



**KITCHEN/DINER** fitted with cottage style units, tiled work surfaces, inset ceramic hob, one and half bowl sink, quarry tiled and luxury vinyl flooring, electric oven, space and plumbing for washing machine and dishwasher, space for fridge/freezer, views to the front, door to garden, radiators.



**FIRST FLOOR LANDING** with stairs to Loft Room, airing cupboard.



**BEDROOM ONE** a front aspect double bedroom with double glazed window providing stunning views over farmland with fitted shutters, built in wardrobe, radiator.

**BEDROOM TWO** a rear aspect double bedroom with double glazed window with fitted shutters, shelved cupboard, radiator.

**BEDROOM THREE** a front aspect room with double glazed window with fitted shutters, built in wardrobes, radiator.



**SHOWER ROOM** fully tiled in a wet room style with walk in shower, vanity wash hand basin, low level wc, heated towel rail, double glazed window.



**SECOND FLOOR LOFT ROOM** with Velux windows providing views to the rear, eaves storage cupboard.

**OUTSIDE** To one side there is gated driveway parking in front of a timber **GARAGE**.



**THE REAR GARDEN** is another attractive feature of this lovely home with a good size paved and shingled south facing entertaining area, leading onto the remainder where there is a large expanse of

lawned garden with fenced and shaped hedge surround. Greenhouse, garden shed and oil container.

**M13270326**                      **EPC BAND: F**  
**COUNCIL TAX BAND: TBC**

**VIEWING:** Please contact our Marlow office  
[homes@andrewmilsom.co.uk](mailto:homes@andrewmilsom.co.uk) or 01628 890707.

**DIRECTIONS:** use **RG9 6PT** and travelling from Marlow along Frieth Road Corntop can be found on the left hand side before you reach the crossroads identified by an Andrew Milsom for sale board.

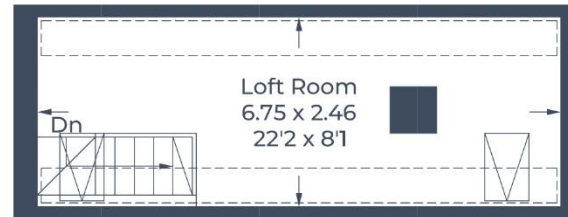
**MONEY LAUNDERING REGULATIONS:**  
Intending purchasers will be asked to produce identification documentation at a later stage and we would ask for your co-operation in order that there will be no delay in progressing a sale.

For clarification we would wish to inform prospective purchasers that we have prepared these particulars as a general guide. These particulars are not guaranteed nor do they form part of any contract. We have not carried out a detailed survey, nor tested the services, appliances and specific fittings. Room sizes should not be relied upon for carpets, fixtures and fittings.

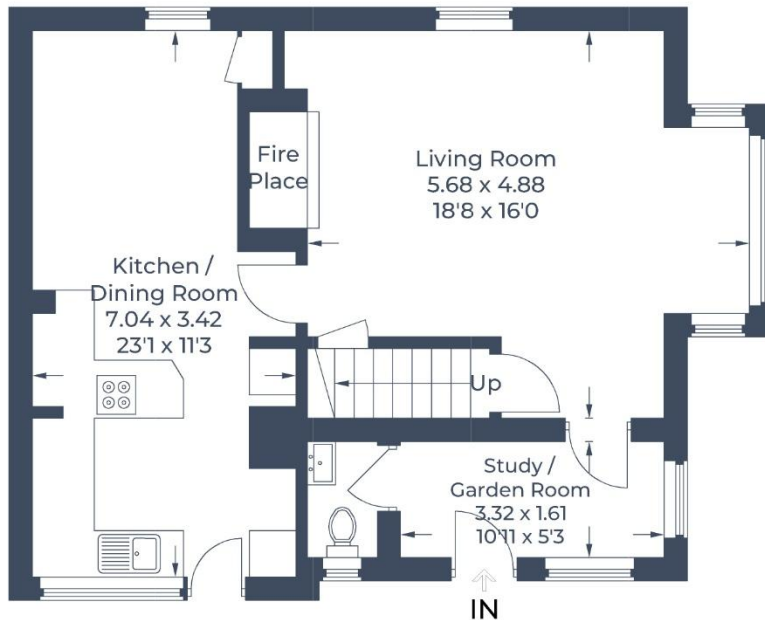
Approximate Gross Internal Area  
 Ground Floor = 59.1 sq m / 636 sq ft  
 First Floor = 39.2 sq m / 422 sq ft  
 Second Floor = 16.5 sq m / 178 sq ft  
 Garage = 15.1 sq m / 162 sq ft  
 Total = 129.9 sq m / 1,398 sq ft



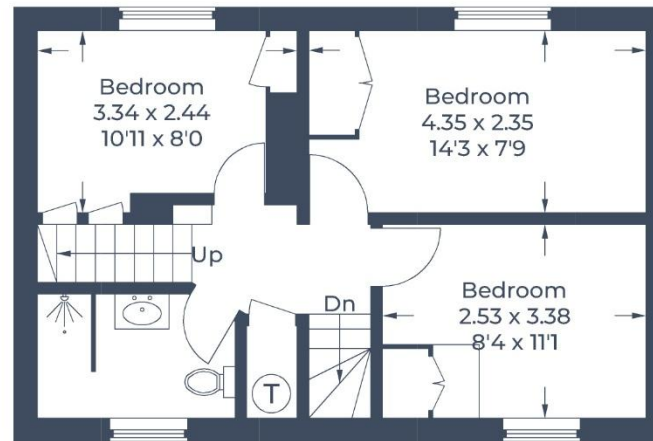
 = Reduced headroom below 1.5m / 5'0"



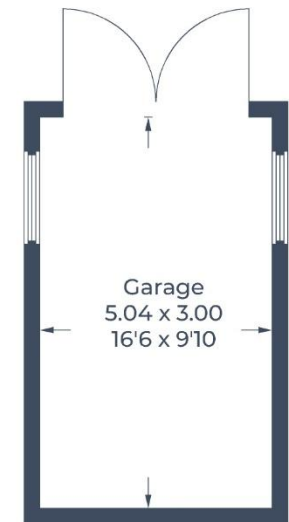
**Second Floor**



**Ground Floor**



**First Floor**



(Not Shown In Actual Location / Orientation)

Illustration for identification purposes only,  
 measurements are approximate, not to scale.