



## Flat 49 Bentley House, Abbeygate Court, March, Cambridgeshire, PE15 9GH

£795 Per annum



This modern second-floor two-bedroom flat is situated within walking distance of the town centre. It comes to you unfurnished, ready to make it your own. However, for ease, kitchen white goods are included!

There are 2 double bedrooms with an en-suite to the master. Family bathroom with a shower over the bath and an open plan lounge/kitchen/diner.

Bentley House benefits from double-glazed windows, electric heating, and one allocated parking space per flat!

Water is paid via a monthly contribution towards the bulk supply.

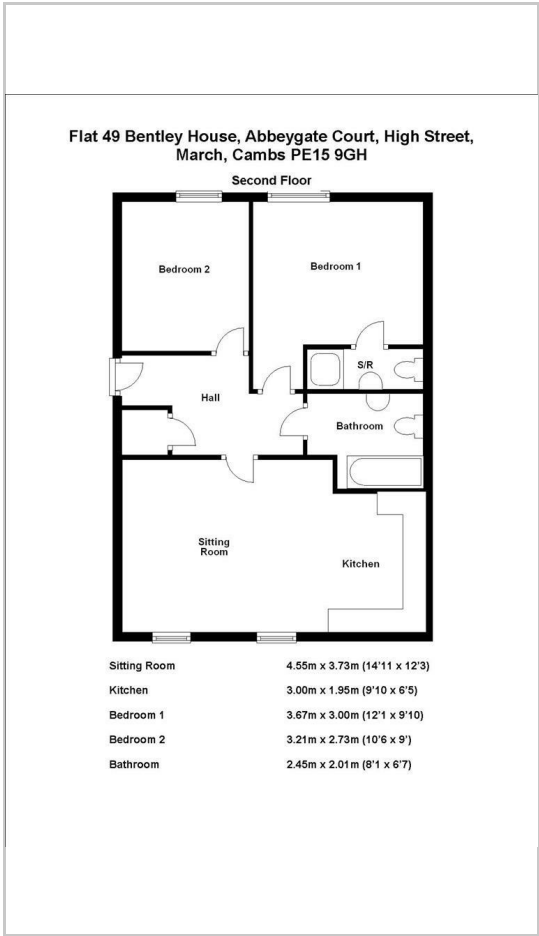
Contact OpenArch to schedule a viewing without delay.



Area Map



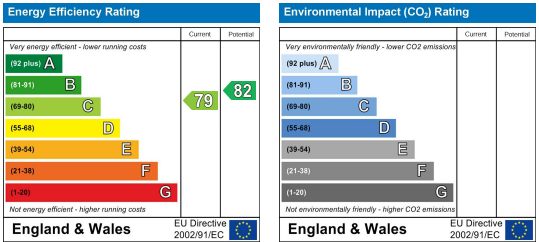
Floor Plans



Credit References and Deposit

Prospective tenants will be required to complete a credit referencing application payable whether successful or not. Prior to taking occupation of the property you will be required to pay a deposit of 1½ times the monthly rent, the first months rent in advance and an administration fee.

Energy Efficiency Graph



These particulars, whilst believed to be accurate are set out as a general outline only for guidance and do not constitute any part of an offer or contract. Intending purchasers should not rely on them as statements of representation of fact, but must satisfy themselves by inspection or otherwise as to their accuracy. No person in this firms employment has the authority to make or give any representation or warranty in respect of the property.