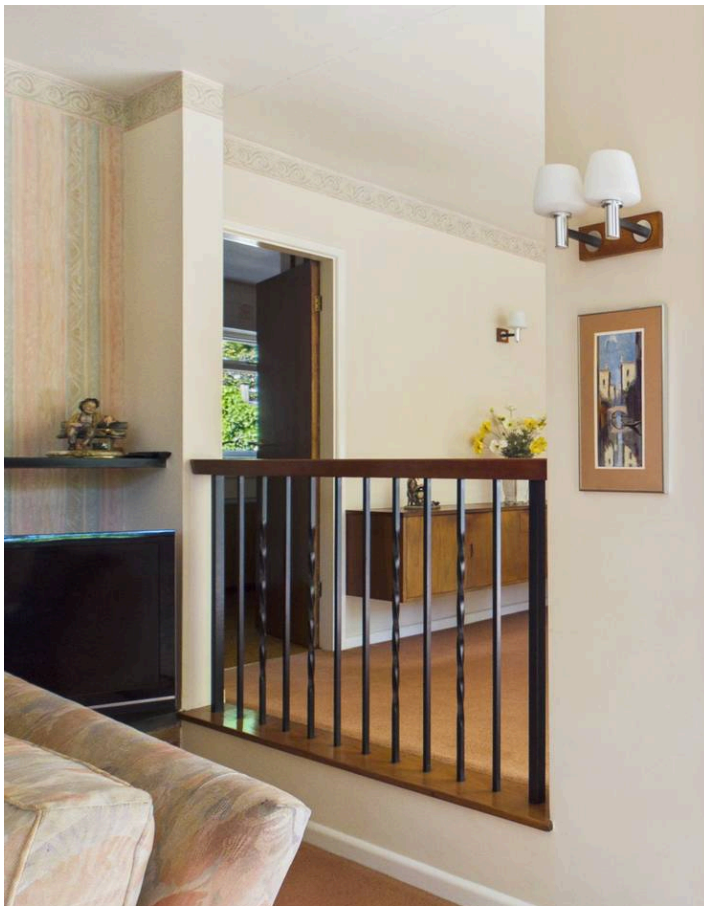




4 Hatfield Road, Nottingham - NG3 5EQ

Guide Price £650,000 - £675,000



4 Hatfield Road

Nottingham, Nottingham

GUIDE PRICE £650,000-£675,000 Rare opportunity to purchase a large and versatile 3 bed detached bungalow on a highly desirable corner plot in Mapperley Park. Huge potential and with no upward chain!

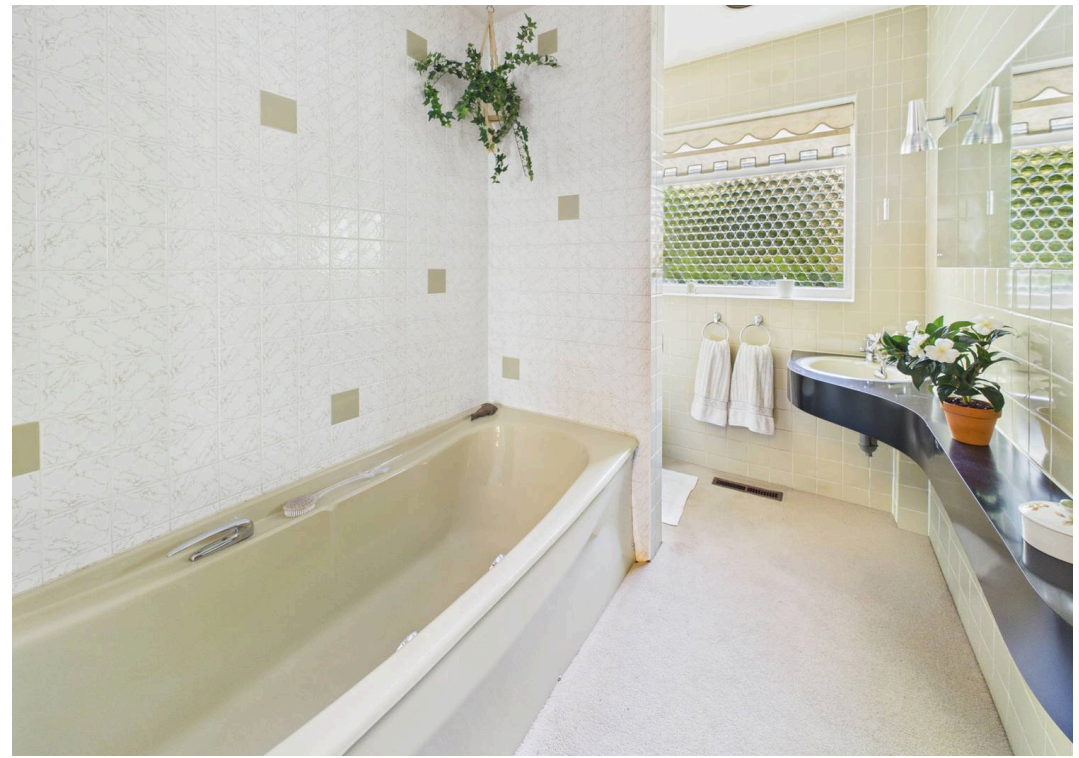
Council Tax band: F

Tenure: Freehold

- Generous detached bungalow offering huge potential
- Offered to the market with NO UPWARD CHAIN
- Stunning tree-lined flat corner plot in a highly sought after area of Mapperley Park
- Ideal for those seeking the benefits of single-storey living
- Large lounge with picture window and adjoining dining area with exceptional garden views
- Breakfast kitchen with an adjoining utility/laundry room
- Three good-sized bedrooms
- Four-piece bathroom (including both a bath and separate shower enclosure)
- Gated large driveway leading to a substantial tall-height garage with space for up to three vehicles
- Beautiful southerly-facing garden with established planting, lawn and patio seating space









Approximate total area⁽¹⁾

158.4 m²
1703 ft²

(1) Excluding balconies and terraces

Calculations reference the RICS IPMS 3C standard. Measurements are approximate and not to scale. This floor plan is intended for illustration only.

GIRAFFE360





David James Estate Agents

David James Estate Agents, 45B Plains Road – NG3 5JU

0115 962 4213 • mapperley@david-james.com • www.david-james.com

These particulars are produced in good faith and are set out as a general guide only. Measurements are approximate and floor plans are for illustrative purposes only. Services have not been tested. We have established professional relationships with third-party suppliers for the provision of services to Clients, details of which can be found on the property listing page on our website.