

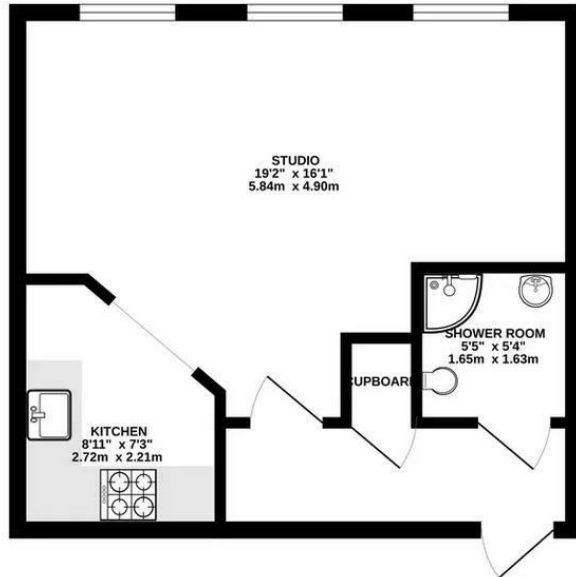


## 67 City House London Road, Croydon, CR0 2NS

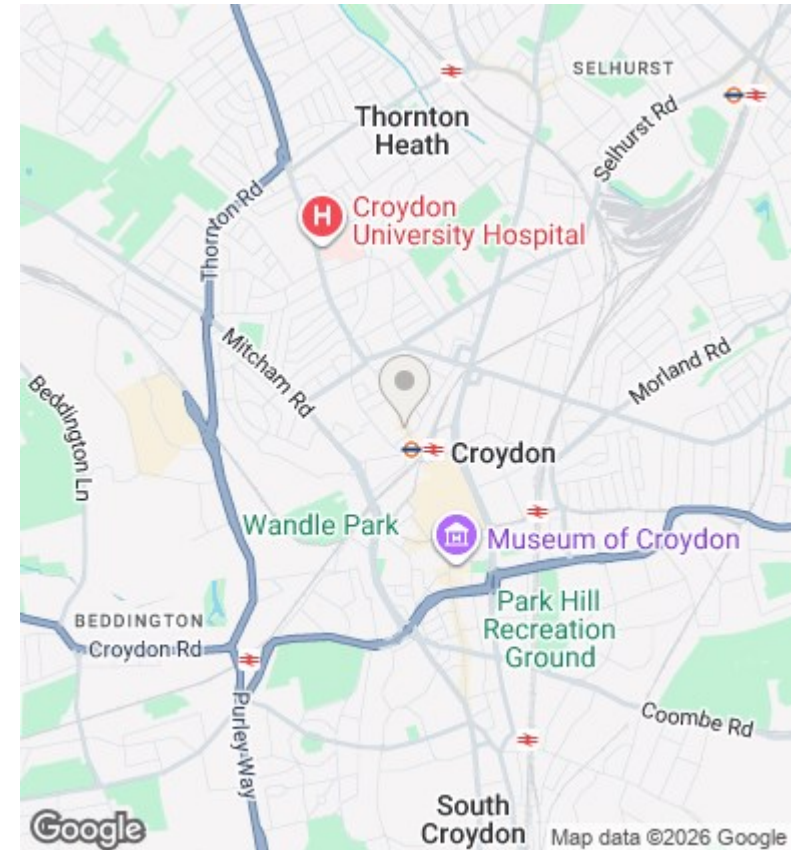
Asking Price £140,000

- Contemporary Spacious Studio Apartment
- Panoramic Views
- 5 Minute walk to Croydon Town Centre
- Communal Gardens
- Chain Free
- Easy Access to West Croydon Station
- Sought After Location
- Concierge
- Ideal For First Time Buyer

342 sq.ft. (31.8 sq.m.) approx.



TOTAL FLOOR AREA: 342 sq.ft. (31.8 sq.m.) approx.



## Directions

## Viewings

Viewings by arrangement only. Call 0208 681 8133 to make an appointment.

## Council Tax Band

B

## EPC Rating:

B

| Energy Efficiency Rating                    |  | Current                 | Potential |
|---|--|-------------------------|-----------|
| Very energy efficient - lower running costs |  |                         |           |
| (92 plus) A                                 |  |                         |           |
| (81-91) B                                   |  | 82                      | 82        |
| (69-80) C                                   |  |                         |           |
| (55-68) D                                   |  |                         |           |
| (39-54) E                                   |  |                         |           |
| (21-38) F                                   |  |                         |           |
| (1-20) G                                    |  |                         |           |
| Not energy efficient - higher running costs |  |                         |           |
| England & Wales                             |  | EU Directive 2002/91/EC |           |