



Kingsdowne Road, KT6

£524,950

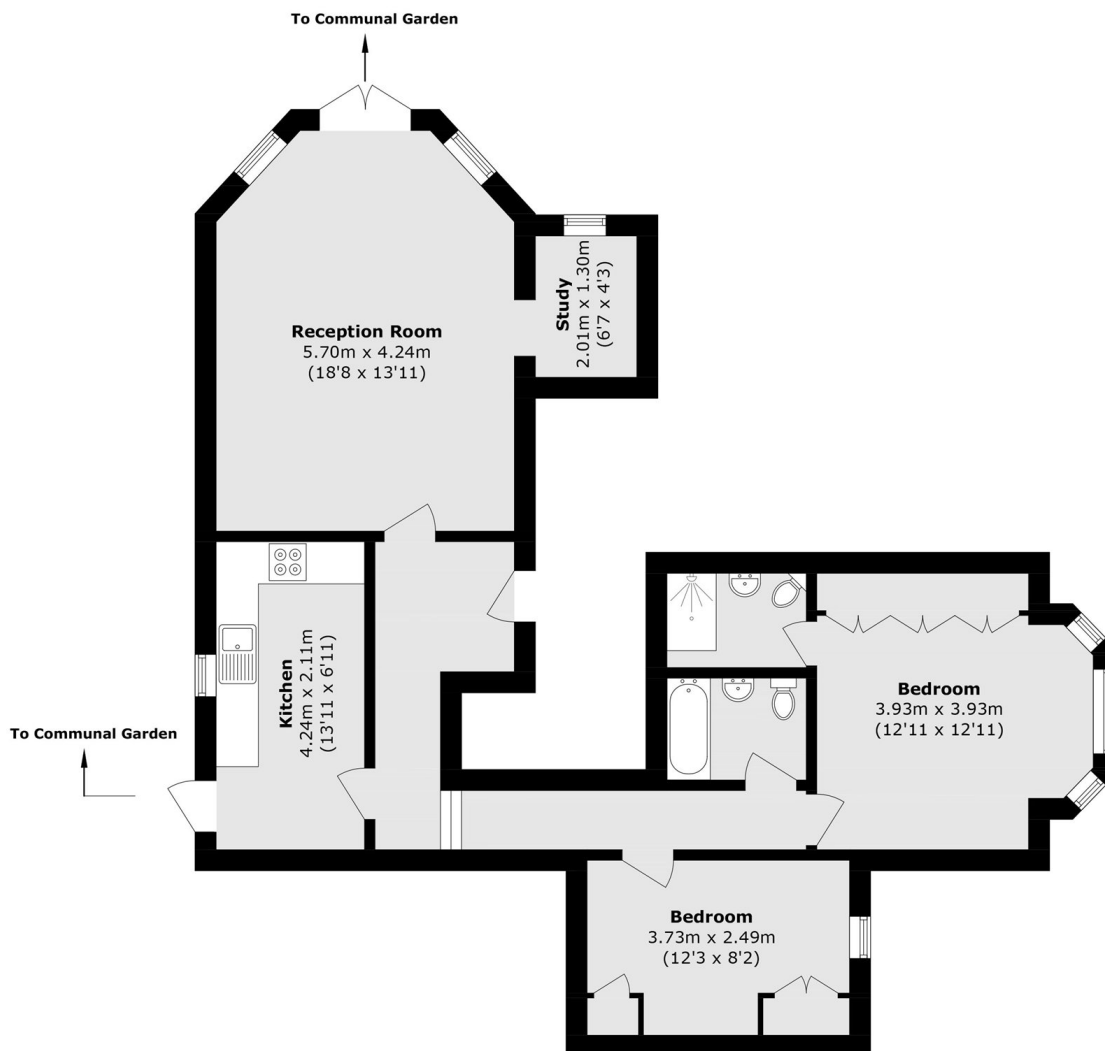
A spacious two bedroom, ground floor apartment set within this imposing and elegant Victorian house. There is a large reception room, a separate kitchen, two good sized bedrooms and two bathrooms. There are high ceilings throughout and double doors leading out to the well-maintained, south-west-facing communal garden. This property also benefits from a share of the freehold, off street parking and no onward chain.

This desirable property is located on the leafy Kingsdowne Road, just a 12-minute walk (or a 3-minute drive) from Surbiton's popular high street and mainline train station, offering fast and direct trains to London Waterloo in just 16 minutes. The flat also benefits from resident parking in the Oak Hill zone, allowing parking directly outside the station for £120 per year.

Features

- First Floor
- Newly Refurbished
- Two Bedrooms
- Communal Garden
- Off-Street Parking
- Share Of Freehold

Kingsdowne Road, Surbiton, KT6



Total area (approx.): 77.5 sq. m (834.2 sq. ft)