



Cloysters Green

St Katharine Docks, E1W

£2,500 per month
(£576.92 per week)

A three bedroom apartment located moments from St Katharine Dock's. The property is available furnished and boasts a private patio, large open plan reception/kitchen, 3 double bedrooms, 2 bathrooms and separate WC.



Cloysters Green

St Katharine Docks, E1W

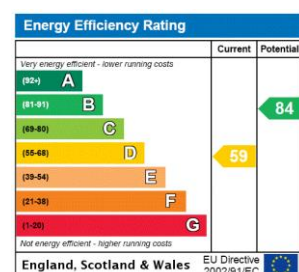
- Three Double Bedrooms
- Two Bathrooms
- Private Terrace
- Moments From St. Katharine Docks
- Council Tax Band Not Found



A beautifully presented 3 bedroom apartment located moments from St Katharine Docks. The property is available furnished and boasts a private patio, large open plan reception/kitchen, 3 double bedrooms, 2 bathrooms and separate WC.

St Katharine Docks is Central London's only marina, a truly unique location set north side of the River Thames alongside the iconic landmark, Tower Bridge. The area boasts a variety of bars and restaurants surrounding the dock as-well as stunning views of The Shard. Whilst residents can easily walk to The City, the area is well connected with excellent transport links via Tower Hill, Tower Gateway and Fenchurch Street stations.

Minimum Term: months
Deposit Required: £2,884.62
Local Authority: Tower Hamlets
Council Tax Band: E
EPC Rating: D
Furnished



Chestertons Tower Bridge Lettings

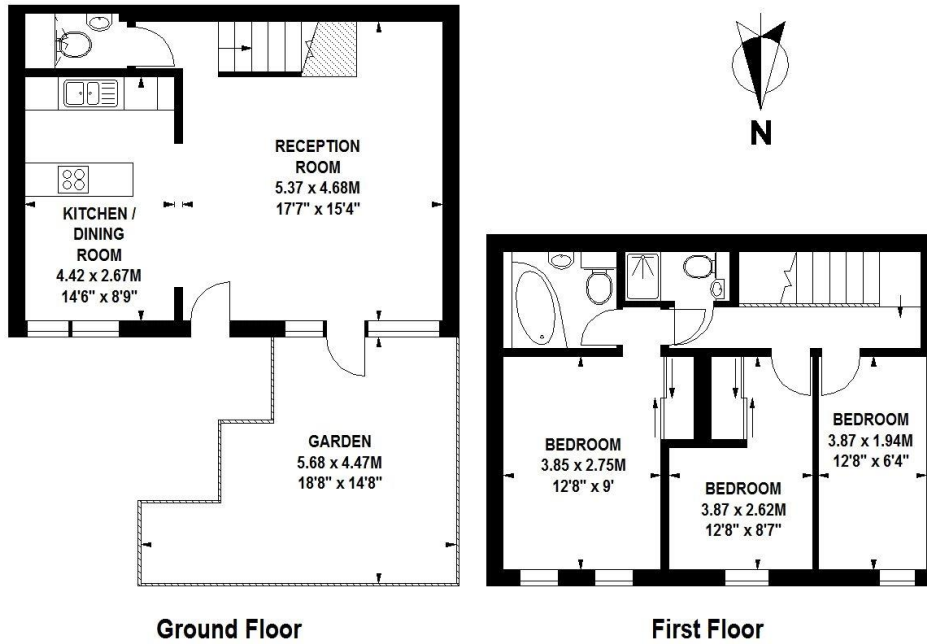
220 Tower Bridge Road
 Tower Bridge
 London
 SE1 2UP
 towerbridge@chestertons.co.uk
 02073576911
 chestertons.co.uk

Additional tenant charges apply (fees apply to non-AST tenancies only)
 Tenancy Agreement Fee: £300
 References per Tenant/Guarantor: £60
 Inventory check (approx. £100 – £250 inc. VAT)
 chestertons.co.uk/property-to-rent/applicable-fees

Cloysters Green, E1

Approximate Gross Internal Area 85 sq m / 915 sq ft

 Under 1.5m head height



Floor Plan produced for Chestertons by Mays Floorplans © . Tel 020 3397 4594

Illustration for identification purposes only, not to scale

All measurements are maximum, and include wardrobes and window bays where applicable

