



## Kenley Road, TW1

£2,195 Per calendar month

A well-presented two double bedroom ground floor maisonette offering bright and spacious accommodation throughout. The property features wood flooring, a good size reception room with doors opening onto a private rear garden with storage shed, a fitted kitchen with appliances, two double bedrooms and a bathroom.

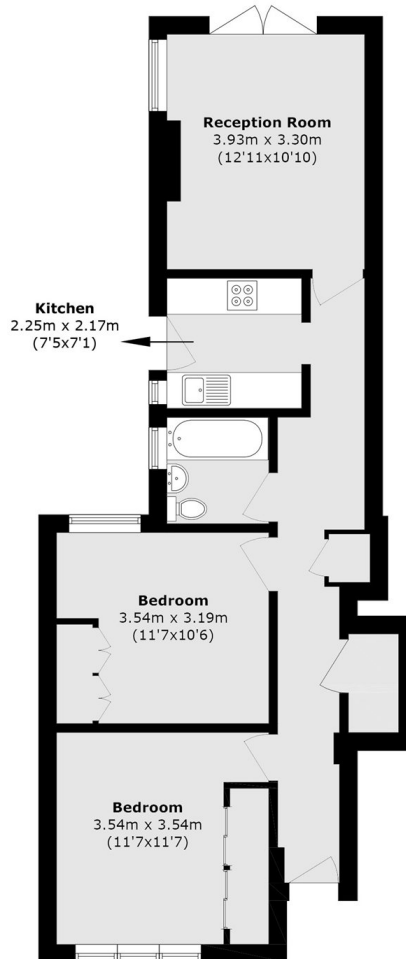
Kenley Road is a quiet residential street in the heart of St Margarets, just a few hundred yards from Moor Mead Park and 0.2 miles from the mainline station with links to London Waterloo. The shops, cafés, and restaurants of the village High Street are also within easy walking distance.

### Features

Ground Floor Maisonette

Two Double Bedrooms

# Kenley Road, St Margarets, TW1



Total area (approx.): 60.8 sq. m (654.5 sq. ft)