



Neston Grove, Birmingham



## Property Description

**THREE GOOD SIZE BEDROOMS!** This mid terrace is situated in a **FANTASTIC** location not far from the **HEARTLANDS HOSPITAL!** Ready to move into as this is a great investment or family home! Close to local transport routes and shops this will not be around long! **CALL NOW BEFORE ITS TOO LATE!!!** 0121 742 1725

## Entrance Hallway

Central heating radiator and stairs to first floor accommodation.

## Lounge

Double glazed bay window to front elevation, central heating radiator and storage cupboard.

## Dining Room

Double glazed window to rear elevation, central heating radiator, loft access via hatch, and door to side elevation.

## Kitchen

A range of wall and base units with work surface over incorporating a sink with drainer unit, space and connections for gas cooker, space and plumbing for washing machine, space for appliances,



## Landing

Loft access via hatch and all doors off.

## Bedroom One

Two double glazed windows to front elevation, central heating radiator, storage cupboard and central heating boiler housed.

## Bedroom Two

Double glazed window to rear elevation and central heating radiator.

## Bedroom Three

Double glazed window to rear elevation and central heating radiator.

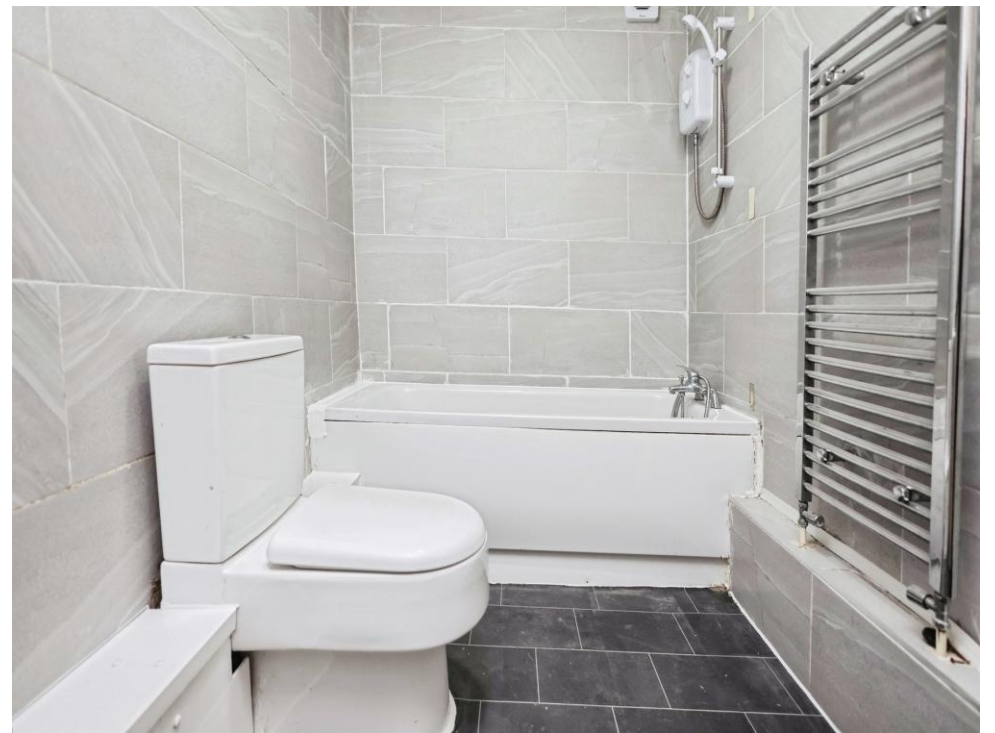
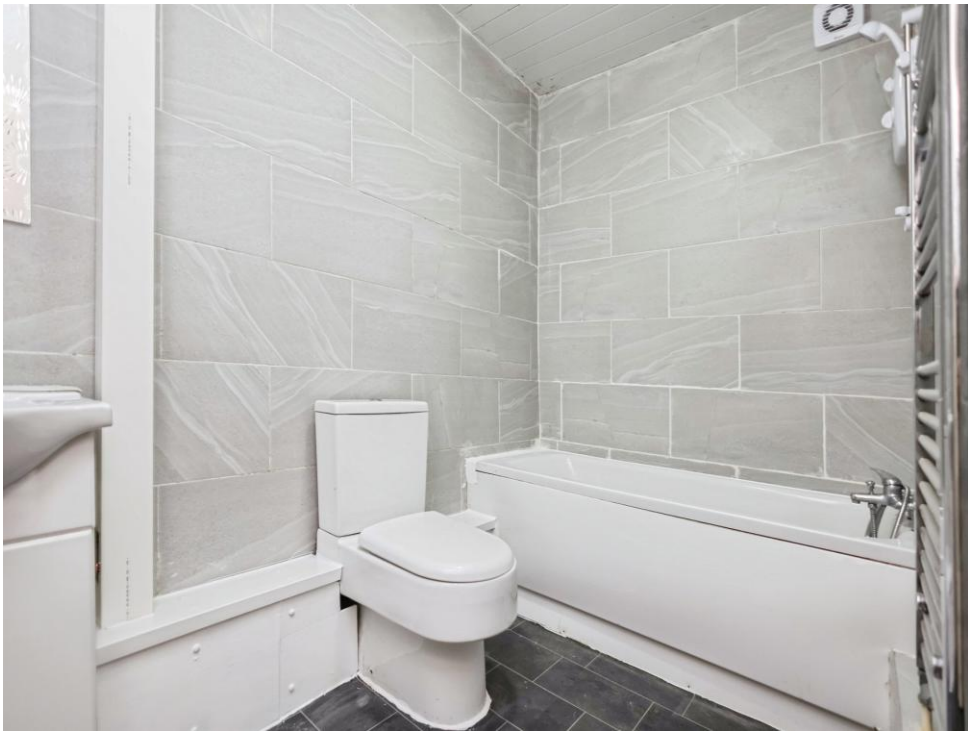
## Bathroom

Bath with electric shower over, W.C, wash hand basin, central heating radiator, extractor and tiling to walls.

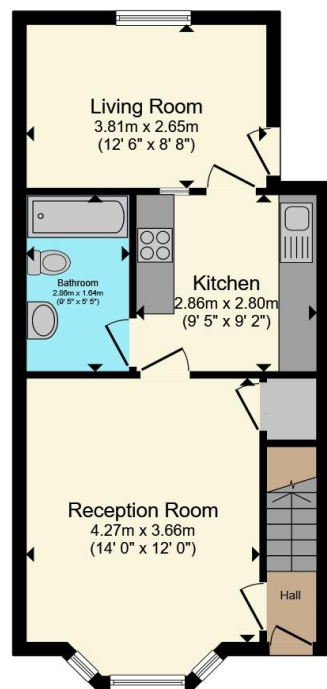
## Rear Garden

Slabbed patio, laid to lawn and fencing to boundaries.

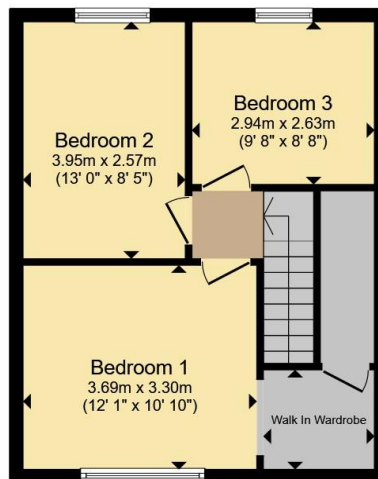








**Ground Floor**



**First Floor**

Total floor area 85.0 m<sup>2</sup> (915 sq.ft.) approx

This floor plan is for illustrative purposes only. It is not drawn to scale. Any measurements, floor areas (including any total floor area), openings and orientation are approximate. No details are guaranteed, they cannot be relied upon for any purpose and they do not form part of any agreement. No liability is taken for any error, omission or misstatement. A party must rely upon its own inspection(s). Powered by [www.propertybox.io](http://www.propertybox.io)



To view this property please contact Burchell Edwards on

**T 0121 742 1725**  
**E [sheldon@burchelledwards.co.uk](mailto:sheldon@burchelledwards.co.uk)**

2208 Coventry Road Sheldon  
 BIRMINGHAM B26 3JH

EPC Rating: D Council Tax  
 Band: A

Tenure: Freehold

**view this property online [burchelledwards.co.uk/Property/SHL210678](http://burchelledwards.co.uk/Property/SHL210678)**



1. MONEY LAUNDERING REGULATIONS Intending purchasers will be asked to produce identification documentation at a later stage and we would ask for your co-operation in order that there will be no delay in agreeing the sale. 2. These particulars do not constitute part or all of an offer or contract. 3. The measurements indicated are supplied for guidance only and as such must be considered incorrect. Potential buyers are advised to recheck measurements before committing to any expense. 4. We have not tested any apparatus, equipment, fixtures, fittings or services and it is in the buyers interest to check the working condition of any appliances.

Burchell Edwards is a trading name of Connells Residential which is registered in England and Wales under company number 1489613, Registered Office is Cumbria House, 16-20 Hockliffe Street, Leighton Buzzard, Bedfordshire, LU7 1GN. VAT Registration Number is 500 2481 05.

**See all our properties at [www.burchelledwards.co.uk](http://www.burchelledwards.co.uk) | [www.rightmove.co.uk](http://www.rightmove.co.uk) | [www.zoopla.co.uk](http://www.zoopla.co.uk)**

Property Ref: SHL210678 - 0006