



2



1



1



D



Description

We are delighted to offer to the market this beautifully presented two bedroom first floor flat, situated in the heart of the Poets district of Worthing, close to local shopping facilities, easy access to the beach, parks, schools, restaurants, bus routes and mainline station.

Accommodation offers entrance hall, open plan lounge/kitchen, two bedrooms and bathroom. Other benefits include an allocated parking space, gas fired central heating and a recently refitted kitchen.



Key Features

- First Floor Flat
- Communal Gardens
- Resident Parking Space
- Leasehold
- Gas Fired Central Heating
- Long Lease
- Two Bedrooms
- Refitted Kitchen
- Easy Access to the Beach
- Council Tax Band B



robertluff.co.uk

30 Guildbourne Centre, Worthing, West Sussex, BN11 1LZ | 01903 331247 | info@robertluff.co.uk

Robert
Luff & Co



Communal Entrance

Part glazed communal front door and stairs leading to:

First Floor

Front door to:

Entrance Hall

Storage shelf and stripwood door to:

Open Plan Lounge/Kitchen

5.31 (into bay) x 4.26 (17'5" (into bay) x 13'11")

Lounge Area

Sash cord bay window and further sash cord window with southerly aspect, radiator, decorative coving, picture rail and attractive wood panelling with shelf.

Kitchen Area

Sage green shaker style kitchen, Zenith worktops, stainless steel sink with mixer tap, Zanussi electric oven, Zanussi four ring induction hob, integrated AEG microwave, cupboard enclosed Worcester boiler, integrated fridge/freezer, tiled splashbacks, wood effect flooring, space and plumbing for washing machine, and radiator.

Bedroom One

3.92 x 3.22 (12'10" x 10'6")

Stripped wood door from hallway, sash cord bay window with westerly aspect, attractive wood panel wall with shelving and radiator.

Bedroom Two

3.22 x 2.08 (10'6" x 6'9")

Sash window to front, storage shelves, decorative coving, picture rail and sash window providing a view and limited access to the balcony ((please note, this is not a door or designated entry point to the balcony).

Bathroom

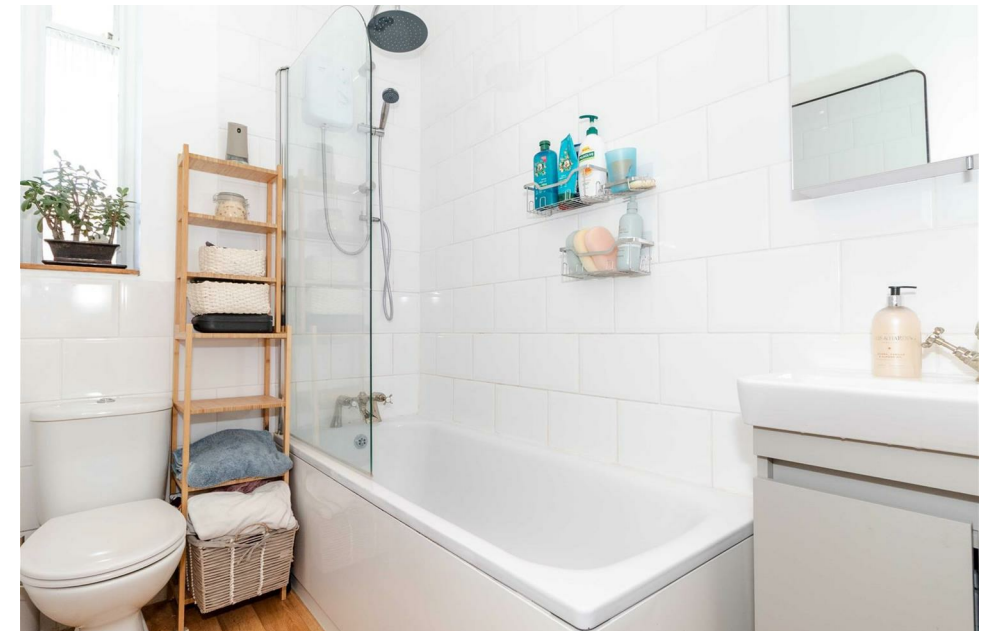
Panel enclosed bath with mixer tap, over bath Triton shower with rainfall head and separate attachment, low flush WC, basin with period style mixer tap, set in a vanity unit with storage under, heated towel rail, downlighters, frosted window and tiled splashbacks.

Outside

Attractive communal gardens, parking area with allocated parking space.

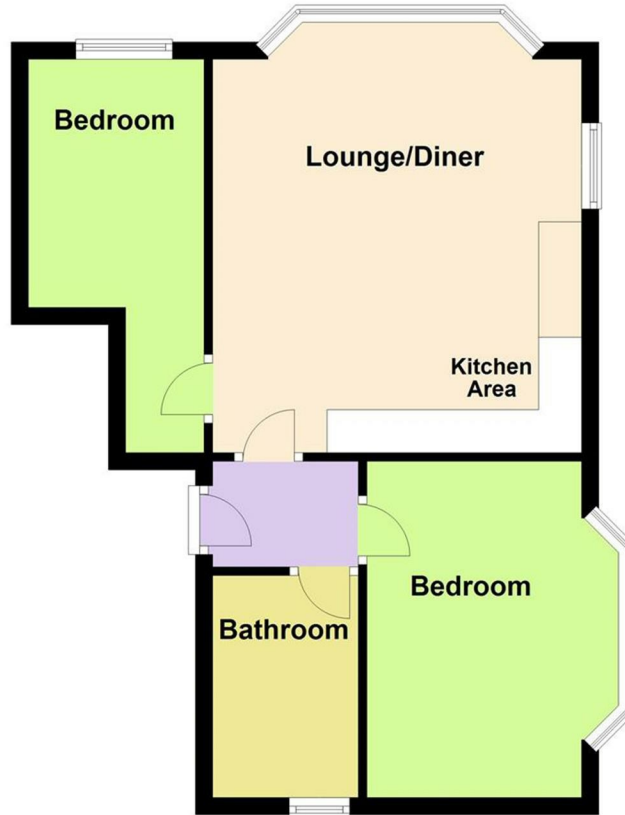
Tenure

Leasehold. 168 years remaining on the lease. Maintenance £1,500 every 6 months.



Floor Plan Belsize Road

Floor Plan
Approx. 45.7 sq. metres (491.6 sq. feet)



Total area: approx. 45.7 sq. metres (491.6 sq. feet)



Energy Efficiency Rating			Environmental Impact (CO ₂) Rating		
	Current	Potential		Current	Potential
Very energy efficient - lower running costs			Very environmentally friendly - lower CO ₂ emissions		
(92 plus) A			(81 plus) A		
(81-91) B			(69-80) B		
(69-80) C			(55-68) C		
(55-68) D			(39-54) D		
(39-54) E			(21-38) E		
(21-38) F			(1-20) F		
(1-20) G			Not environmentally friendly - higher CO ₂ emissions		
Not energy efficient - higher running costs					
		65			77
England & Wales	EU Directive 2002/91/EC		England & Wales	EU Directive 2002/91/EC	

The information provided about this property does not constitute or form any part of an offer or contract, nor may it be regarded as representations. All interested parties must verify accuracy and your solicitor must verify tenure/lease information, fixtures and fittings and, where the property has been extended/converted, planning/building regulation consents. All dimensions are approximate and quoted for guidance only as are floor plans which are not to scale and their accuracy cannot be confirmed. References to appliances and/or services does not imply that they are necessarily in working order or fit for the purpose.

robertluff.co.uk

30 Guildbourne Centre, Worthing, West Sussex, BN11 1LZ

01903 331247 | info@robertluff.co.uk

Robert
Luff & Co