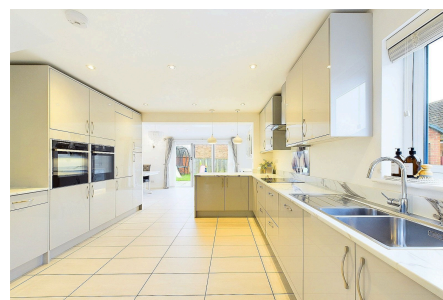


Shelley Drive, Broadbridge Heath

Offers Over £600,000

3 2 2

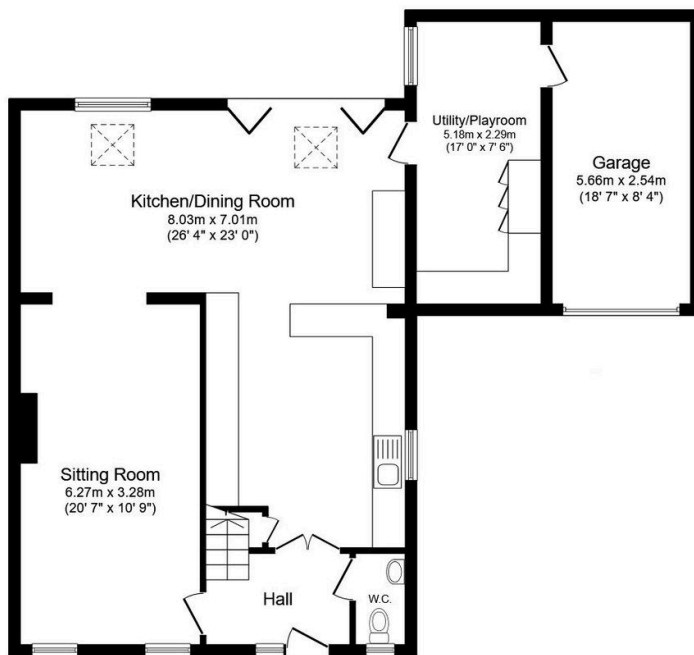


A beautifully presented and extended Detached Family Home in a popular Village Location, boasting a 26ft x 23ft Kitchen Diner, luxurious Principal Suite with En Suite and a generous South Facing Garden.

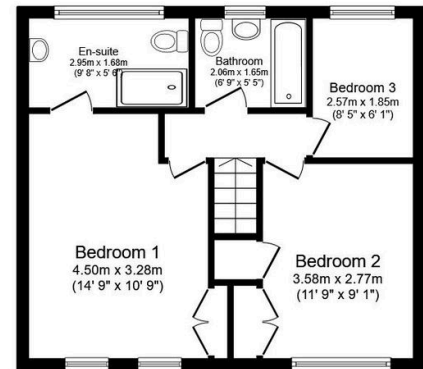
Tenure: Freehold
Council Tax Band: E
EPC: Current C - Potential B

Key Features

- Watch Our Video Tour
- South Facing Rear Garden
- En Suite To Principal Bedroom
- Driveway Parking For 4 Cars
- 17ft Utility/Play Room
- Extended Detached Family Home
- 26ft x 23ft Open Plan Kitchen Diner
- Beautifully Presented Throughout
- 18ft x 8ft Garage
- Popular Village Location



Ground Floor
Floor area 96.0 m² (1,033 sq.ft.)



First Floor
Floor area 44.1 m² (475 sq.ft.)

TOTAL: 140.1 m² (1,507 sq.ft.)

This floor plan is for illustrative purposes only. It is not drawn to scale. Any measurements, floor areas (including any total floor area), openings and orientations are approximate. No details are guaranteed, they cannot be relied upon for any purpose and do not form any part of any agreement. No liability is taken for any error, omission or misstatement. A party must rely upon its own inspection(s). Powered by www.Propertybox.io