



Stockett Lane, Coxheath, Maidstone, Kent, ME17 4PU
Guide Price £200,000



NO FORWARD CHAINGUIDE PRICE £200,000 TO £210,000***GROUND FLOOR TWO BEDROOM APARTMENT WITH GARDEN AND GARAGE WITHIN WALKING DISTANCE OF LOCAL AMENITIES

A rarely available two-bedroom ground floor apartment, ideally positioned within the sought-after village of Coxheath.

The property offers well-proportioned accommodation comprising an entrance hall, a modern shower room, two double bedrooms, a fitted kitchen, and a comfortable living room. A particular feature is the private garden with patio, lawns and well stocked borders, with a pathway leading to a garage en bloc, providing both convenience and additional storage.

Coxheath is a highly desirable location, offering a range of local amenities including a Tesco Express, Londis, Post Office and a nearby doctor's surgery, making it well suited for day-to-day living.

Ideal for first time buyers, downsizers and investors, this excellent two bedroom home will generate plenty of interest so do not delay and contact Page and Wells and book your viewing to avoid missing out



GROUND FLOOR

Entrance Hall

Bedroom 1 12'1 x 10'7 (3.68m x 3.23m)

Bedroom 2 7'2 x 11'9 (2.18m x 3.58m)

Kitchen 8'10 x 7'9 (2.69m x 2.36m)

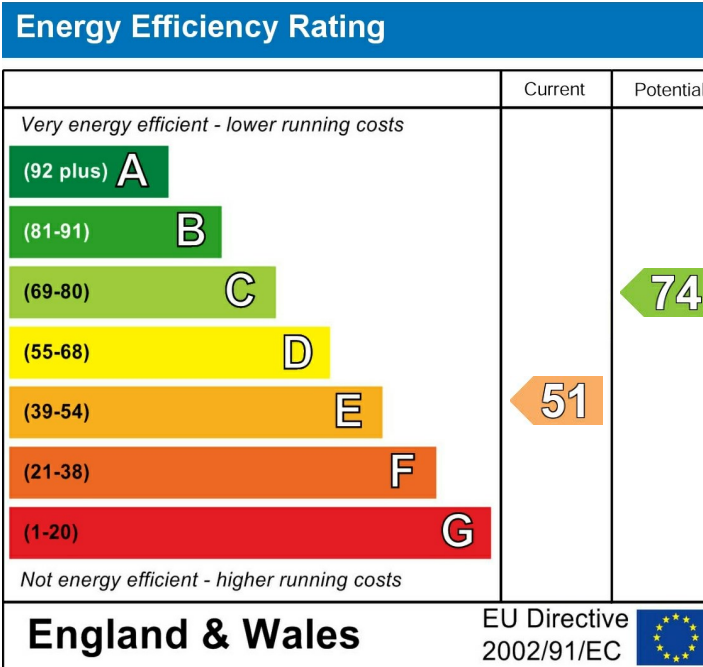
Living Room 14'4 x 10'6 (4.37m x 3.20m)

Bathroom 6'1 x 5'8 (1.85m x 1.73m)

Externally

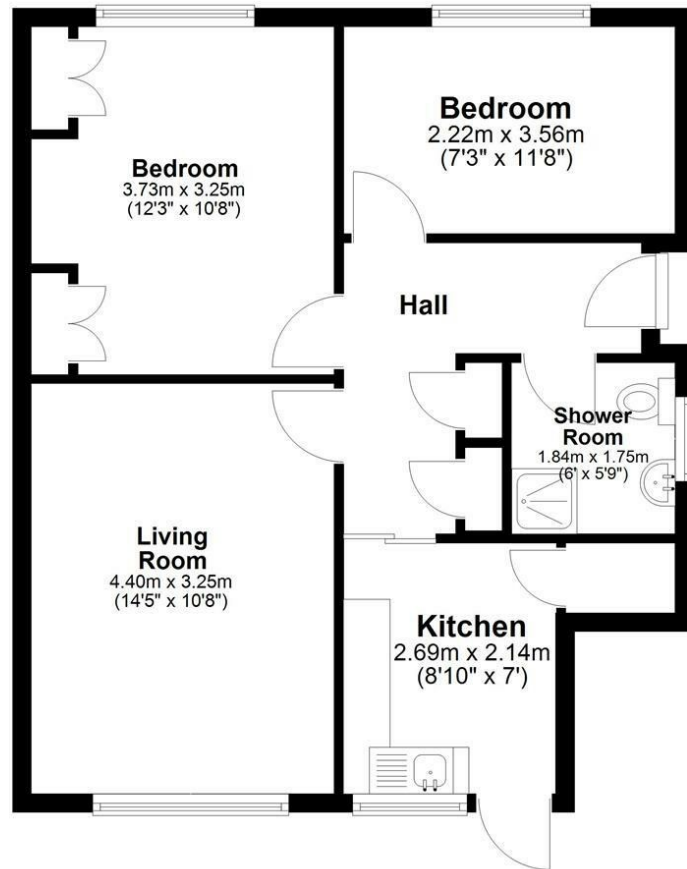
Beautiful Garden

Garage En Bloc



Page & Wells limited for themselves and for the vendors of this property whose agents they are give notice that: 1. These particulars do not constitute any part of, an offer or a contract. 2. All statements contained in these particulars as to this property are made without responsibility on the part of Page & Wells Limited or the Vendor. 3. None of the statements contained in these particulars as to the property is to be relied on as statements or representations of fact. 4. Any intending purchaser must satisfy himself by inspection or otherwise as to the correctness of each of the statements contained in these particulars. 5. The vendor does not make or give, and neither Page & Wells Limited nor any person in their employment has any authority to make or give any representation whatsoever in relation to this property. These particulars are supplied on the understanding that all negotiations are carried out throughout Page & Wells Limited. Properties with a reference prefixes EAA are those which Page & Wells Limited disclose an interest in accordance with the provisions of the Estates Agents Act 1979

Ground Floor



Total area: approx. 53.9 sq. metres (580.1 sq. feet)

