



JONES POTTS TAYLOR



22 Schofield Street

, Leigh, WN7 4HT

£995 PCM

JonesPottsTaylor are pleased to present TO LET this three bedroom, garden fronted, mid-terrace property. Located in a sought after residential area of Pennington in Leigh, close to transport and network links, schools, shops and amenities. The property briefly comprises of; entrance hallway, sitting room and kitchen / dining room with French doors leading to a rear garden area. To the first floor are two double bedrooms, a single bedroom and a further family bathroom with three piece suite. Outside to the front is an enclosed garden whilst to the rear is a low maintenance yard with access to off road parking and a detached garage.

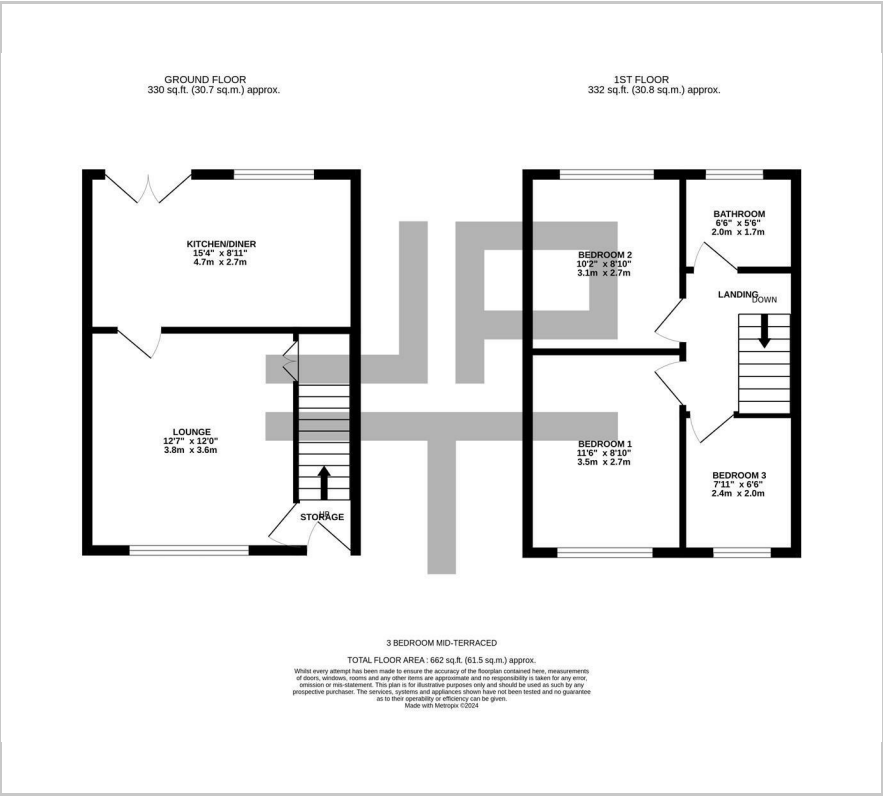
Viewings will be required and under a block viewing schedule.

Viewing

Please contact our Jones Potts Taylor Office on 01942 368600 if you wish to arrange a viewing appointment for this property or require further information.



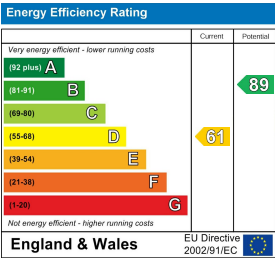
Floor Plan



Area Map



Energy Efficiency Graph



These particulars, whilst believed to be accurate are set out as a general outline only for guidance and do not constitute any part of an offer or contract. Intending purchasers should not rely on them as statements of representation of fact, but must satisfy themselves by inspection or otherwise as to their accuracy. No person in this firms employment has the authority to make or give any representation or warranty in respect of the property.