



## AERODROME ROAD, NW9

£2,100 pcm

This stunning two bedroom, two bathroom apartment is situated on the second floor of an impressive development in Colindale. The property has a large private balcony and wood flooring.

- Two Bedroom
- Two Bathroom
- Wood Flooring
- Private Balcony



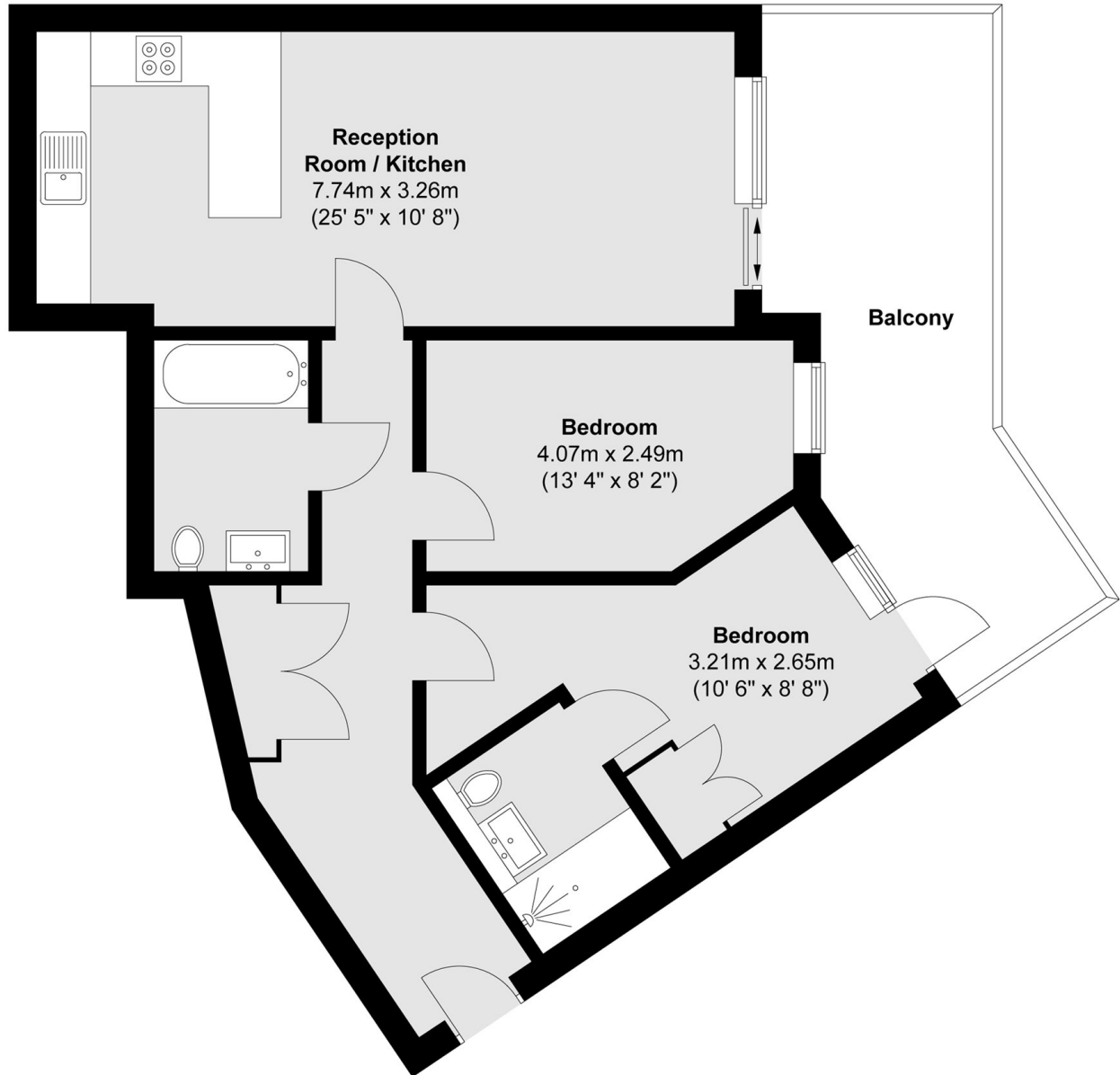
## ABOUT THE HOME

The property is moments away from Colindale station, allowing for easy access into London.





**First Floor**



Total area (approx.) : 69.3 sq. m (746 sq. ft)  
Total balcony area (approx.) : 16.5 sq. m (178 sq. ft)

**LIFE RESIDENTIAL**

203 Trentham Court, Victoria  
Road, London, W3 6BT  
Sales: 020 3668 1112  
Lettings: 020 3668 1111

Energy Rating: . We aim to make our particulars both accurate and reliable. However they are not guaranteed; nor do they form part of an offer or contract. If you require clarification on any points then please contact us, especially if you're traveling some distance to view. Please note that appliances and heating systems have not been tested and therefore no warranties can be given as to their good working order.