



Montague Road, SW19

£325,000

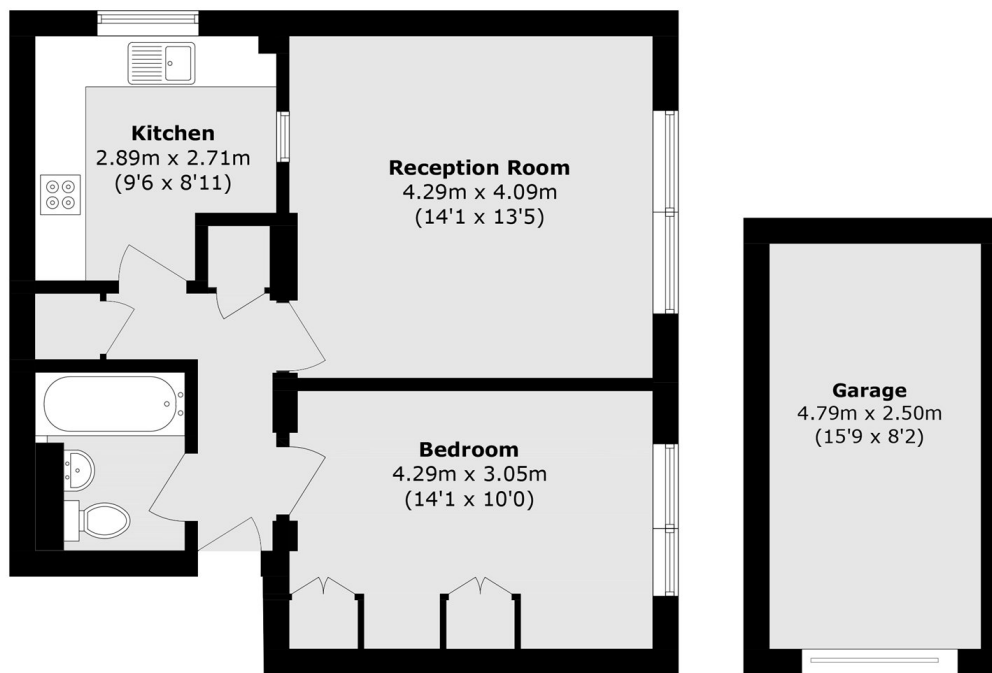
A one double bedroom second floor apartment. Located in the heart of Wimbledon Town, the property further benefits from a garage and a long lease.

Located on a quiet street just off The Broadway, equidistant to both the district line and northern line. Shops, bars and delicious restaurants are all on your doorstep, whilst being in the catchment for outstanding schools.

Features

- One Double Bedroom
- Second Floor
- Garage & Residents Parking
- Close To District Line
- Centre Of Wimbledon
- No Onward Chain

Montague Road, London, SW19



Second Floor

Ground Floor

Total area (approx.): 49.3 sq. m (530.6 sq. ft)
Garage area (approx.): 11.9 sq. m (128.0 sq. ft)