

**HS HAIR & SON**



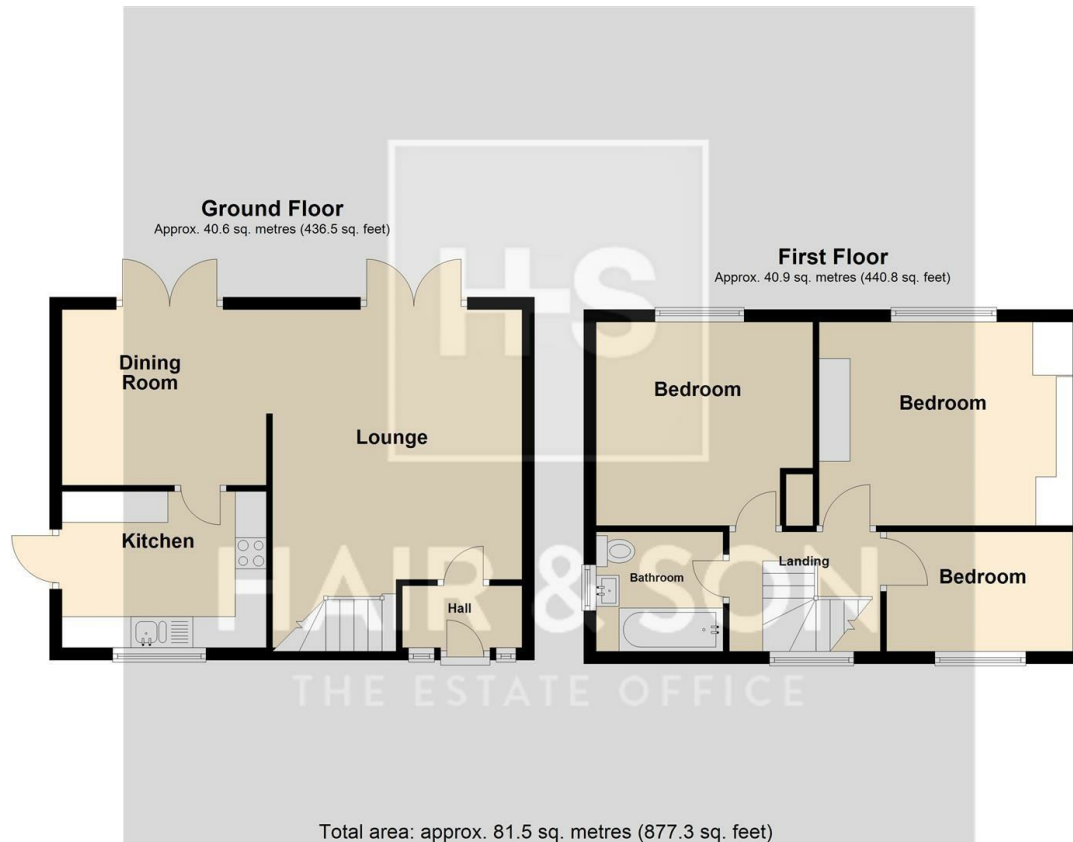
## Wethersfield Close

, Rayleigh SS6 9ER

- THREE BEDROOMS
- GENEROUS SIZE LOUNGE
- MODERN BATHROOM AND KITCHEN
- DOUBLE GLAZED & GAS CENTRAL HEATING
- LARGE STUNNING SOUTH BACKING GARDEN
- SEPARATE DINING ROOM
- GARAGE AND OFF ROAD PARKING FOR 3 CARS
- PERFECT FOR SCHOOLS OF ALL AGES.

**Guide Price £435,000 Freehold**

Local Authority **Rochford District Council**  
Council Tax Band **D**  
EPC Rating **C**



**Sales Rayleigh Office**  
6 High Street, Rayleigh, Essex, SS6 7EF

**Contact**  
01268 774316  
<https://hairandson.co.uk/>

Agents Note: Whilst every care has been taken to prepare these particulars, they are for guidance purposes only. All measurements are approximate and for general guidance purposes only and whilst every care has been taken to ensure accuracy, they should not be relied upon and potential buyers/tenants are advised to recheck the measurements.