



## Beaumont Crescent, W14

£475,000

A spacious and well presented one bedroom apartment set in an attractive period mansion building. Situated on the first floor with wooden floors through-out, separate kitchen, double bedroom and reception.

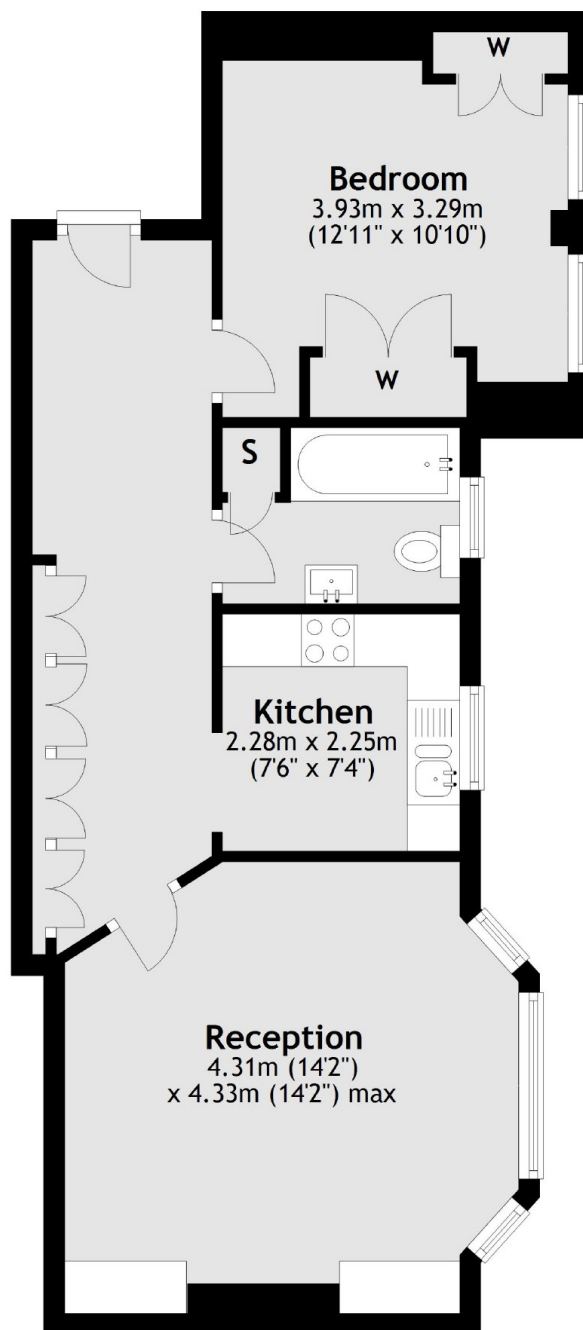
West Kensington Mansions is located on Beaumont Crescent, off North End Road within 300 yards of West Kensington underground station, local shops and the A4 for easy access into and out of Central London.

### Features

- Spacious
- Great Size
- Lovely Condition
- One Bedroom
- Wooden Floors
- High Ceilings

# Beaumont Crescent, London, W14

## First Floor



Total area: approx. 50.4 sq. metres (543.0 sq. feet)