



GROVE PARK, NW9

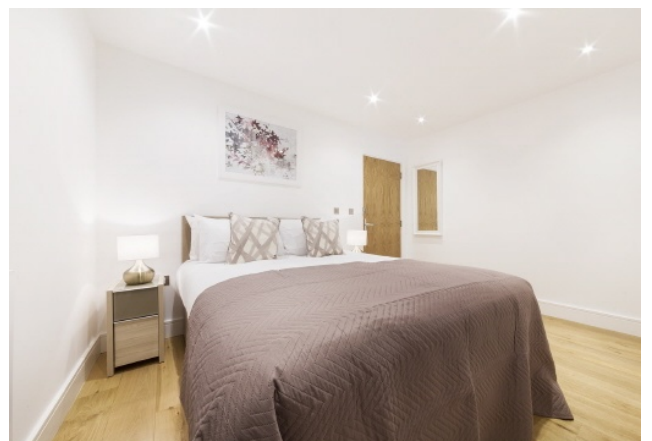
£1,500 pcm

Looking for a new place to call home? Check out this luxurious studio apartment in Silverworks, featuring real oak flooring, brushed metal finishes, and a modern kitchen with a dishwasher. Enjoy secure entry, Sky TV, and access to a landscaped courtyard. With Colindale and Hendon stations just a short walk away, Central London is under 30 minutes away.



ABOUT THE HOME

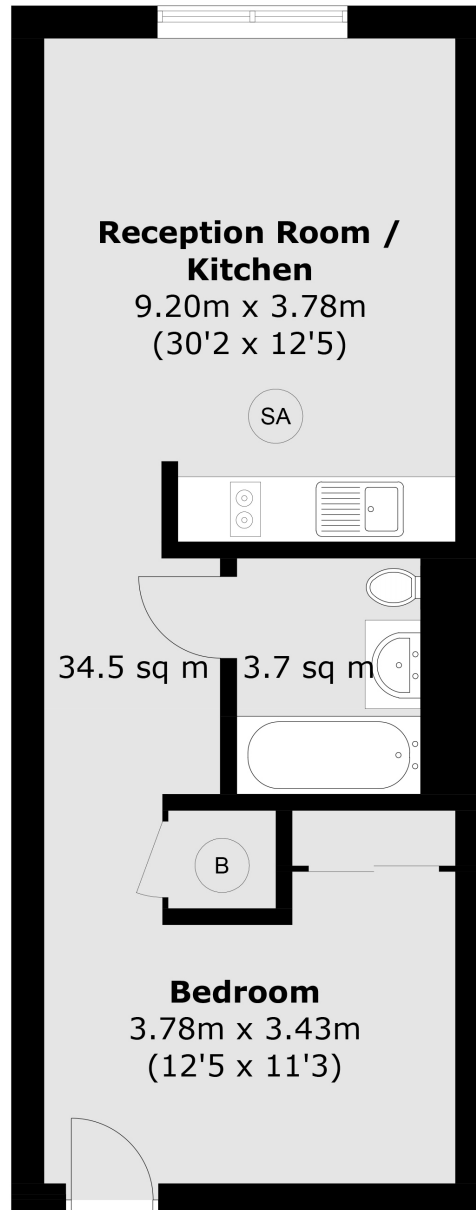
Looking for a new place to call home? Then look no further than this stunning studio apartment, in the Silverworks development. Featuring Galliard Homes





SA Smoke Alarm

B Boiler



Total area (approx.): 39.9 sq. m (429.5 sq. ft)

LiFE RESIDENTIAL

203 Trentham Court, Victoria
Road, London, W3 6BT
Sales: 020 3668 1112
Lettings: 020 3668 1111

Energy Rating: B. We aim to make our particulars both accurate and reliable. However they are not guaranteed; nor do they form part of an offer or contract. If you require clarification on any points then please contact us, especially if you're traveling some distance to view. Please note that appliances and heating systems have not been tested and therefore no warranties can be given as to their good working order.