



Connells

Parnell Road
Eastleigh



Property Description

This spacious three-bedroom semi-detached home in Eastleigh offers well-proportioned living accommodation, ideal for families or first-time buyers.

The property features a welcoming lounge, a separate dining room, and a fitted kitchen with French doors opening out to the generous rear garden-perfect for indoor-outdoor living.

Upstairs, there are three bedrooms, with the master bedroom benefiting from built-in wardrobes, alongside a family bathroom.

Externally, the property boasts a driveway providing off-road parking, and a large rear garden complete with two sheds, offering excellent storage and outdoor space.

Situated in a popular and convenient location, this home is offered with no onward chain.

Entrance Hall

Radiator. Understairs Storage

Lounge Diner

Double glazed window to front aspect .
Radiator.

Kitchen

Double glazed French doors to rear garden.
Radiator. Fitted kitchen with wall and base units. Integrated oven, gas hob and extractor hood. Integrated dishwasher. Space for washing machine and fridge freezer. Boiler. Double glazed door to rear aspect.

Landing

Radiator. Loft access.



Bedroom 1

Double glazed window to front aspect. 2 built in wardrobes. Radiator.

Bedroom 2

Double glazed window to rear aspect. Radiator. Built in cupboard.

Bedroom 3

Double glazed window to rear aspect.

Bathroom

Double glazed window to front aspect. Vanity sink. Toilet. Shower over bath. Heated towel rail.

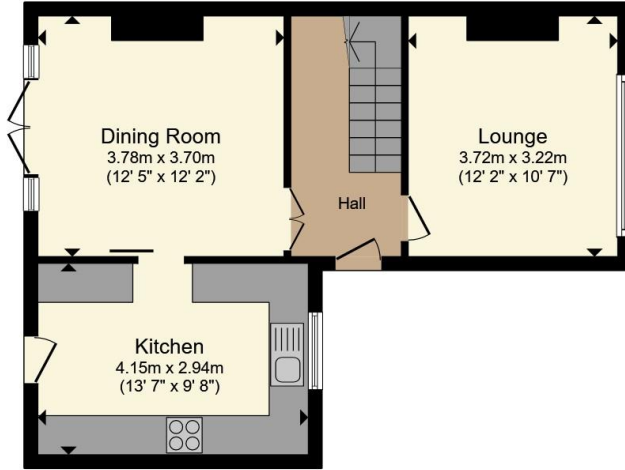
Outside

To the front. Driveway and lawn area.
To the rear. Large rear garden. 2x Sheds. Patio area and lawn. Caution of hole at rear garden.

Agent Notes

All services/appliances have not and will not be tested.
Caution of hole at rear garden.





Ground Floor



First Floor



Total floor area 91.1 m² (981 sq.ft.) approx

This floor plan is for illustrative purposes only. It is not drawn to scale. Any measurements, floor areas (including any total floor area), openings and orientation are approximate. No details are guaranteed, they cannot be relied upon for any purpose and they do not form part of any agreement. No liability is taken for any error, omission or misstatement. A party must rely upon its own inspection(s). Powered by www.propertybox.io



To view this property please contact Connells on

T 02380 618 343
E eastleigh@connells.co.uk

19 Market Street
EASTLEIGH SO50 5RH

EPC Rating: C Council Tax
Band: A

view this property online connells.co.uk/Property/EGH308772

Tenure: Freehold



1. MONEY LAUNDERING REGULATIONS Intending purchasers will be asked to produce identification documentation at a later stage and we would ask for your co-operation in order that there will be no delay in agreeing the sale. 2. These particulars do not constitute part or all of an offer or contract. 3. The measurements indicated are supplied for guidance only and as such must be considered incorrect. Potential buyers are advised to recheck measurements before committing to any expense. 4. We have not tested any apparatus, equipment, fixtures, fittings or services and it is in the buyers interest to check the working condition of any appliances.

Connells Residential is registered in England and Wales under company number 1489613, Registered Office is Cumbria House, 16-20 Hockliffe Street, Leighton Buzzard, Bedfordshire, LU7 1GN. VAT Registration Number is 500 2481 05.

See all our properties at www.connells.co.uk | www.rightmove.co.uk | www.zoopla.co.uk

Property Ref: EGH308772 - 0003