



5 Bed  
House - Detached  
located in

£2,300 Per month

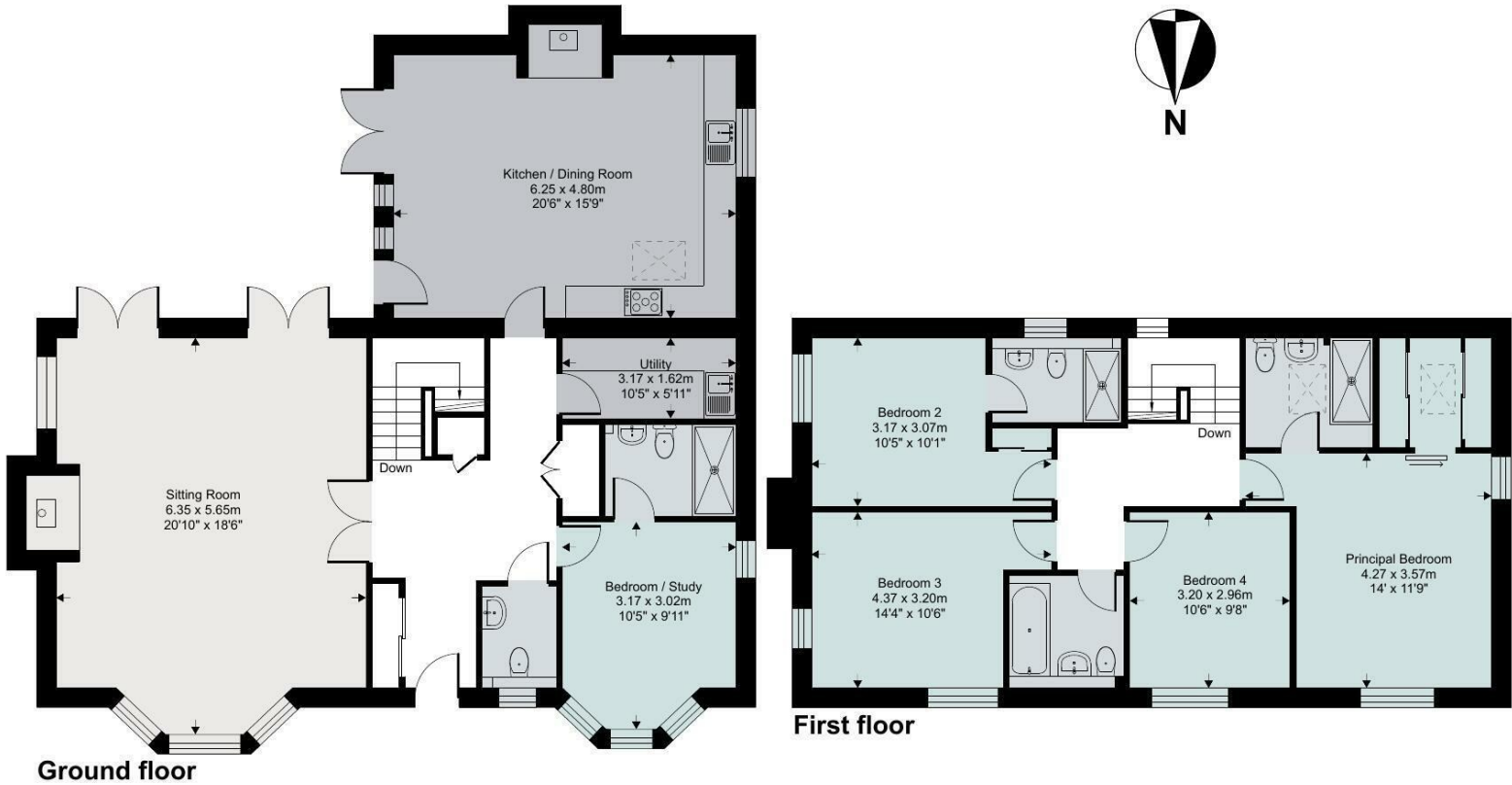


**SMART STREET**  
THE PROPERTY PEOPLE

# Station Road, Corby Glen, Grantham, NG33 4NW

Main House = 2370.69 sq ft / 220.2425 sq m

For identification only - Not to scale



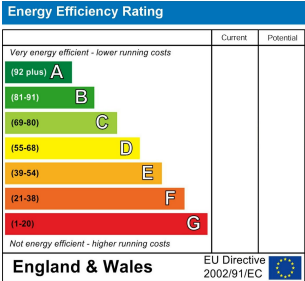
## DIRECTIONS

## CONTACT

14 Withambrook Park  
Grantham  
NG31 9ST

E: [info@smartstreetproperty.com](mailto:info@smartstreetproperty.com)  
T: 01476 247107

This floor plan was constructed using measurements provided to © ncheom 2025 by a third party.  
Produced for Savills (UK) Limited. REF: 1239186



**SMART STREET**  
THE PROPERTY PEOPLE