



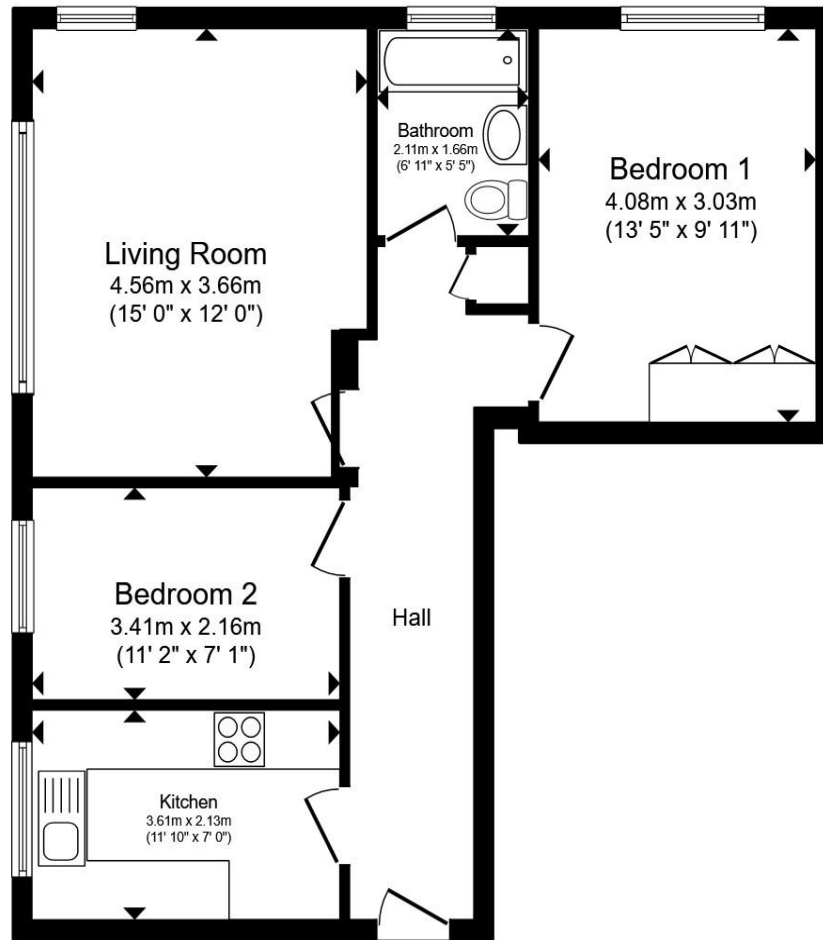
**Wolstonbury Court, Burgess Hill, RH15 9DP**

*welcome to*

## **Wolstonbury Court, Burgess Hill**

This spacious two bedroom first floor flat includes two double bedrooms, large lounge and separate kitchen situated a stone's throw from Burgess Hill town centre and train station with direct links to London and Brighton.





Total floor area 58.3 m<sup>2</sup> (627 sq.ft.) approx

This floor plan is for illustrative purposes only. It is not drawn to scale. Any measurements, floor areas (including any total floor area), openings and orientation are approximate. No details are guaranteed, they cannot be relied upon for any purpose and they do not form part of any agreement. No liability is taken for any error, omission or misstatement. A party must rely upon its own inspection(s). Powered by [www.propertybox.io](http://www.propertybox.io)



welcome to

## Wolstonbury Court, Burgess Hill

- Long lease
- Spacious flat
- Two double bedrooms
- Separate kitchen
- Close to Burgess Hill station

Tenure: Leasehold EPC Rating: C

Council Tax Band: C Service Charge: 1456.00

Ground Rent: Ask Agent

This is a Leasehold property with details as follows; Term of Lease 999 years from 25 Dec 1968. Should you require further information please contact the branch. Please Note additional fees could be incurred for items such as Leasehold packs.

# £210,000



Please note the marker reflects the postcode not the actual property

check out more properties at [fox-and-sons.co.uk](http://fox-and-sons.co.uk)



Property Ref:  
BUH106578 - 0002

1. MONEY LAUNDERING REGULATIONS Intending purchasers will be asked to produce identification documentation at a later stage and we would ask for your co-operation in order that there is no delay in agreeing the sale. 2. These particulars do not constitute part or all of an offer or contract. 3. The measurements indicated are supplied for guidance only and as such must be considered incorrect. Potential buyers are advised to recheck measurements before committing to any expense. 4. We have not tested any apparatus, equipment, fixtures or services and it is in the buyers interest to check the working condition of any appliances. 5. Where an EPC, or a Home Report (Scotland only) is held for this property, it is available for inspection at the branch by appointment. If you require a printed version of a Home Report, you will need to pay a reasonable production charge reflecting printing and other costs. 6. We are not able to offer an opinion either written or verbal on the content of these reports and this must be obtained from your legal representative. 7. Whilst we take care in preparing these reports, a buyer should ensure that his/her legal representative confirms as soon as possible all matters relating to title including the extent and boundaries of the property and other important matters before exchange of contracts.



**01444 232849**



BurgessHill@fox-and-sons.co.uk



16 Station Road, BURGESS HILL, West Sussex,  
RH15 9DQ



**fox-and-sons.co.uk**