



## 6 Wessex Close, Bedworth

Bedworth

Offers Over £220,000



## 6 Wessex Close

Bedworth, Bedworth

This two bedroom semi detached bungalow is perfect for those looking for a comfortable and easy-to-maintain home. Step through the entrance hall into a spacious lounge which has a feature fire place with incorporated coal effect fire and also provides access to the conservatory a great spot to enjoy your morning coffee or unwind with a book. The modern kitchen comes fully equipped with a hob and oven. There are two bedrooms and a modern shower room. The property also benefits from gas fired central heating and double glazing.

Step outside to discover a well maintained garden, perfect for those who love a bit of outdoor living. Whether you want to potter with some plants, enjoy summer barbeques, or simply relax in the fresh air, this garden offers plenty of options. There is a garage and a driveway for additional off-road parking. This bungalow offers a fantastic combination of indoor comfort and outdoor convenience. If you're looking for a move-in ready home with plenty of appeal, this could be the perfect fit and there is also no upward chain.

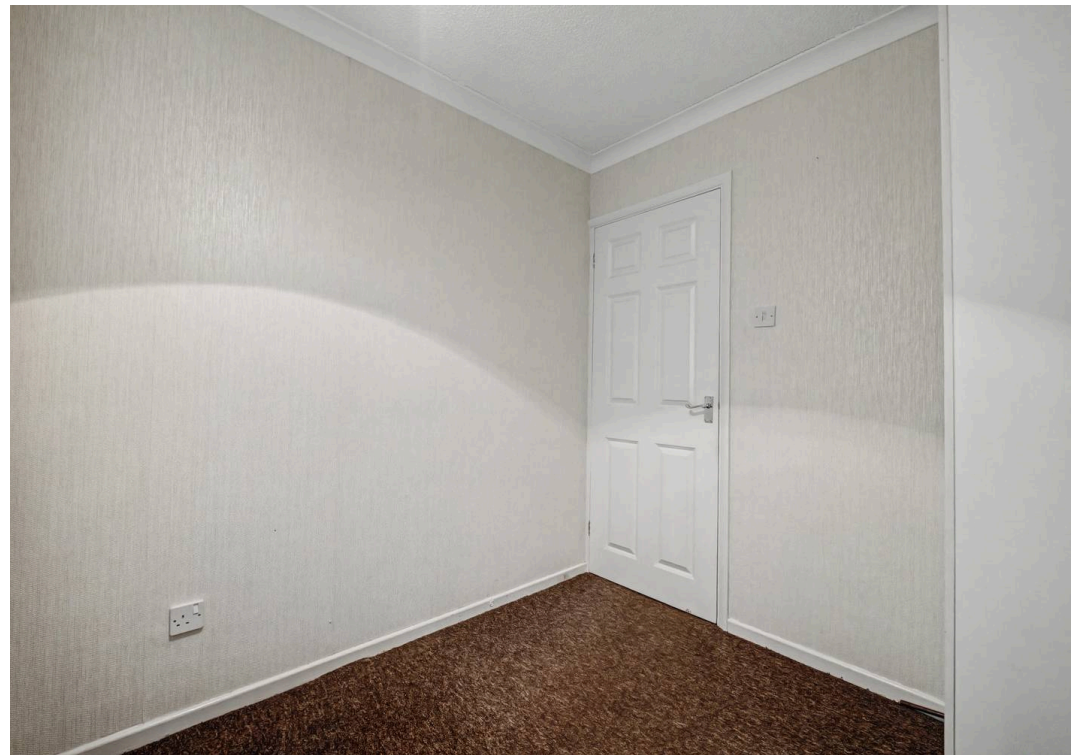
Contact Sheldon Bosley Knight on 02476 374949 or email [nuneaton@sheldonbosleyknight.co.uk](mailto:nuneaton@sheldonbosleyknight.co.uk) for more information.

Council Tax band: B

Tenure: Freehold

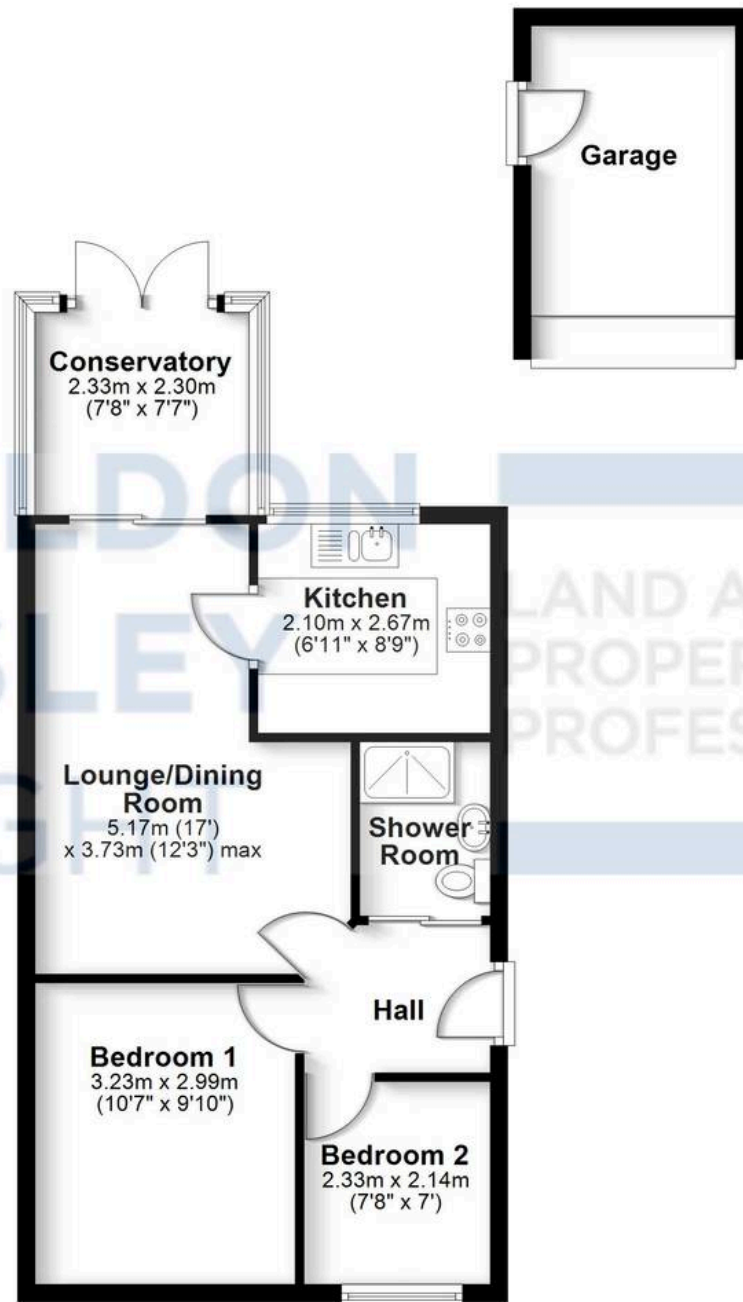
- Semi Detached Bungalow
- Entrance Hall
- Spacious Lounge
- Conservatory
- Modern Kitchen with Hob & Oven





## Ground Floor

Approx. 58.3 sq. metres (627.6 sq. feet)



Total area: approx. 58.3 sq. metres (627.6 sq. feet)

All efforts have been made to ensure the measurements are accurate on this floor plan, however these are for guidance purposes only.  
Plan produced using PlanUp.



## Sheldon Bosley Knight Nuneaton

Sheldon Bosley Knight, 39 Newdegate Street, Nuneaton - CV11 4ER

02476374949 • [nuneaton@sheldonbosleyknight.co.uk](mailto:nuneaton@sheldonbosleyknight.co.uk) • [www.sheldonbosleyknight.co.uk/](http://www.sheldonbosleyknight.co.uk/)