



## 12A High Street

, Epsom, KT19 8AH

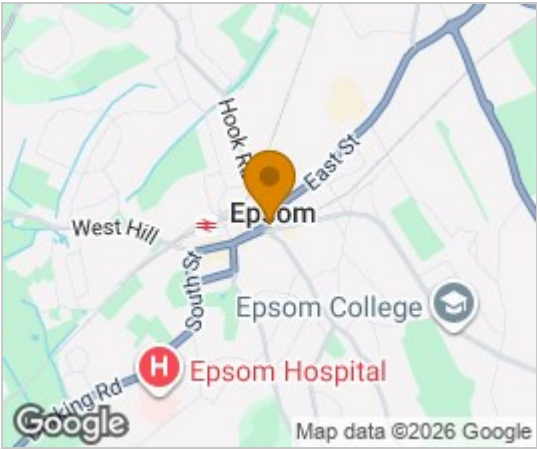
**£1,350**



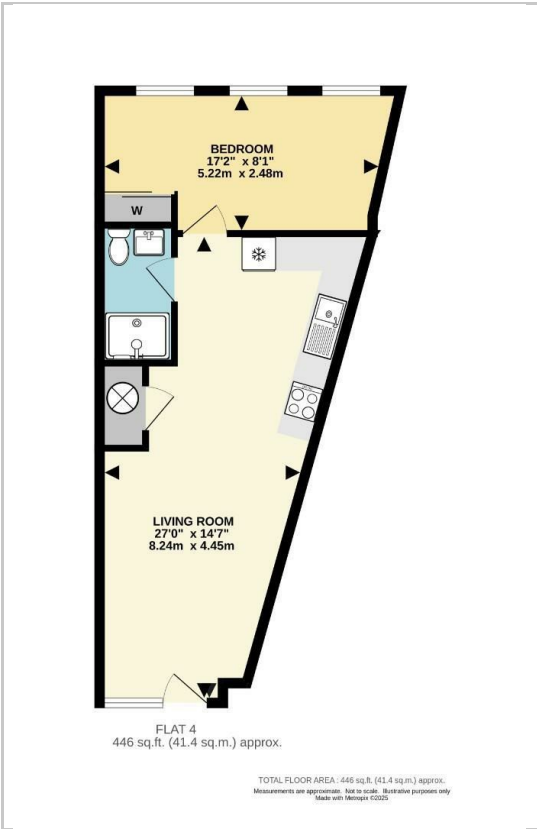
**\*\* LUXURY APARTMENT\*\*** Thomas & May is delighted to offer this one bedroom apartment finished to a high standard including an open plan lounge/ modern kitchen with integrated appliances, luxury shower room, double bedroom with built-in wardrobe. Located in the centre of Epsom close to the station, shops and all local amenities. Please call 01372 848888 to arrange a viewing.



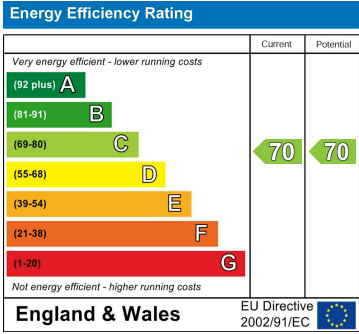
## Area Map



## Floor Plans



## Energy Efficiency Graph



These particulars, whilst believed to be accurate are set out as a general outline only for guidance and do not constitute any part of an offer or contract. Intending purchasers should not rely on them as statements of representation of fact, but must satisfy themselves by inspection or otherwise as to their accuracy. No person in this firm's employment has the authority to make or give any representation or warranty in respect of the property.