



Denman Avenue, UB2

£1,700 Per calendar month

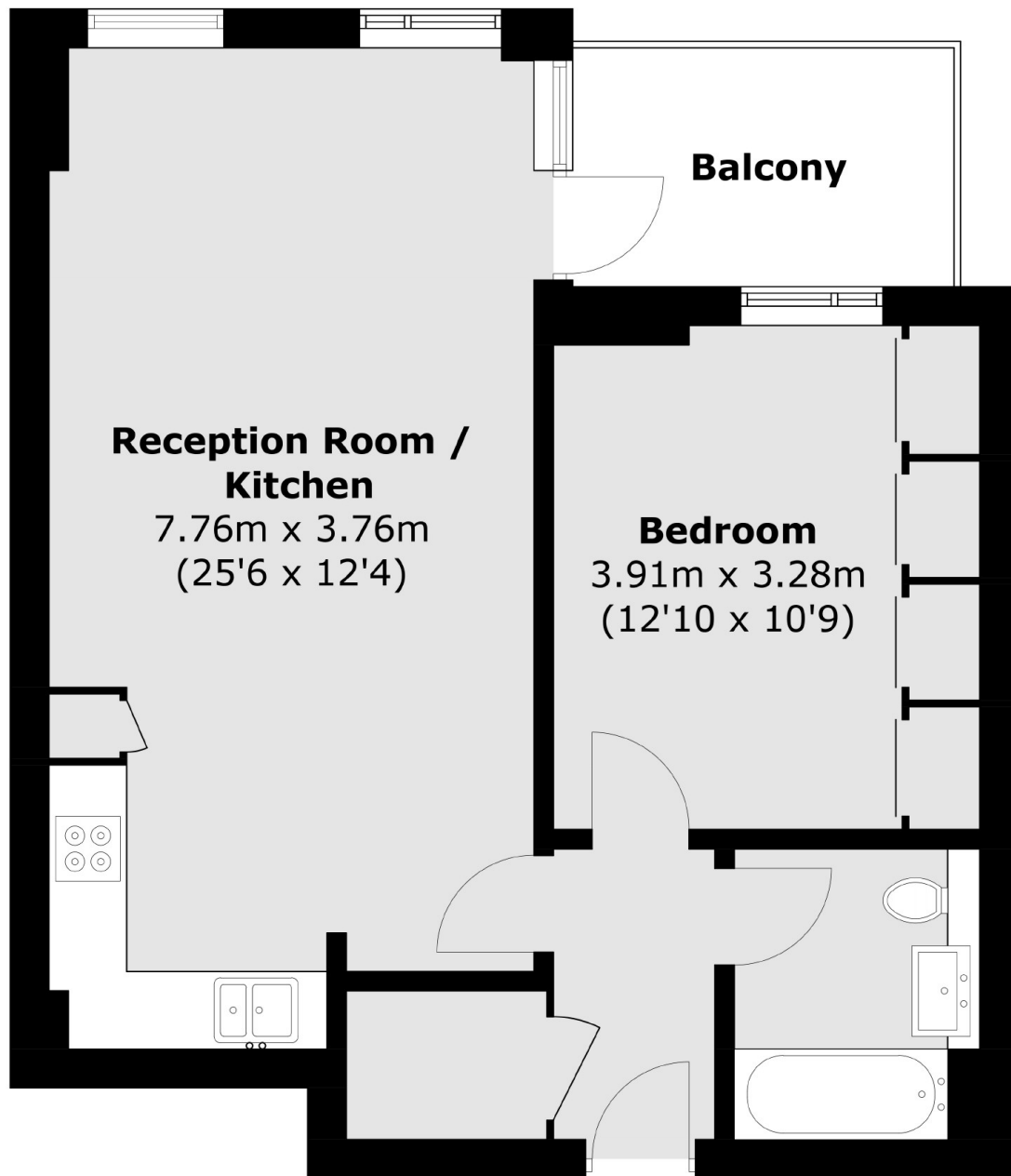
A one bedroom apartment in this exciting new development. It is ideal for access to Ealing Hospital, with a modern finish throughout and includes a large private balcony.

Located close to Ealing Hospital with bus links for easy access into Boston Manor station (Piccadilly Line) and Ealing Broadway station (Central and District Line)

Features

- One Bedroom
- New Build
- Open-Plan Reception
- Balcony
- Close to Hospital
- Unfurnished

Denman Avenue, Southall, UB2



Total area (approx.): 52.1 sq. m (560.8 sq. ft)
Balcony area : 5.4 sq. m (58.1 sq. ft)