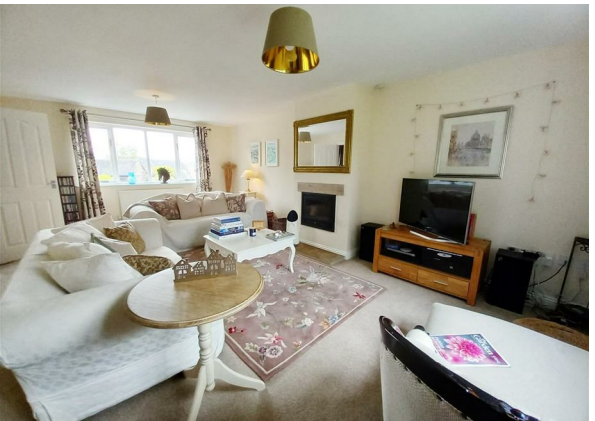


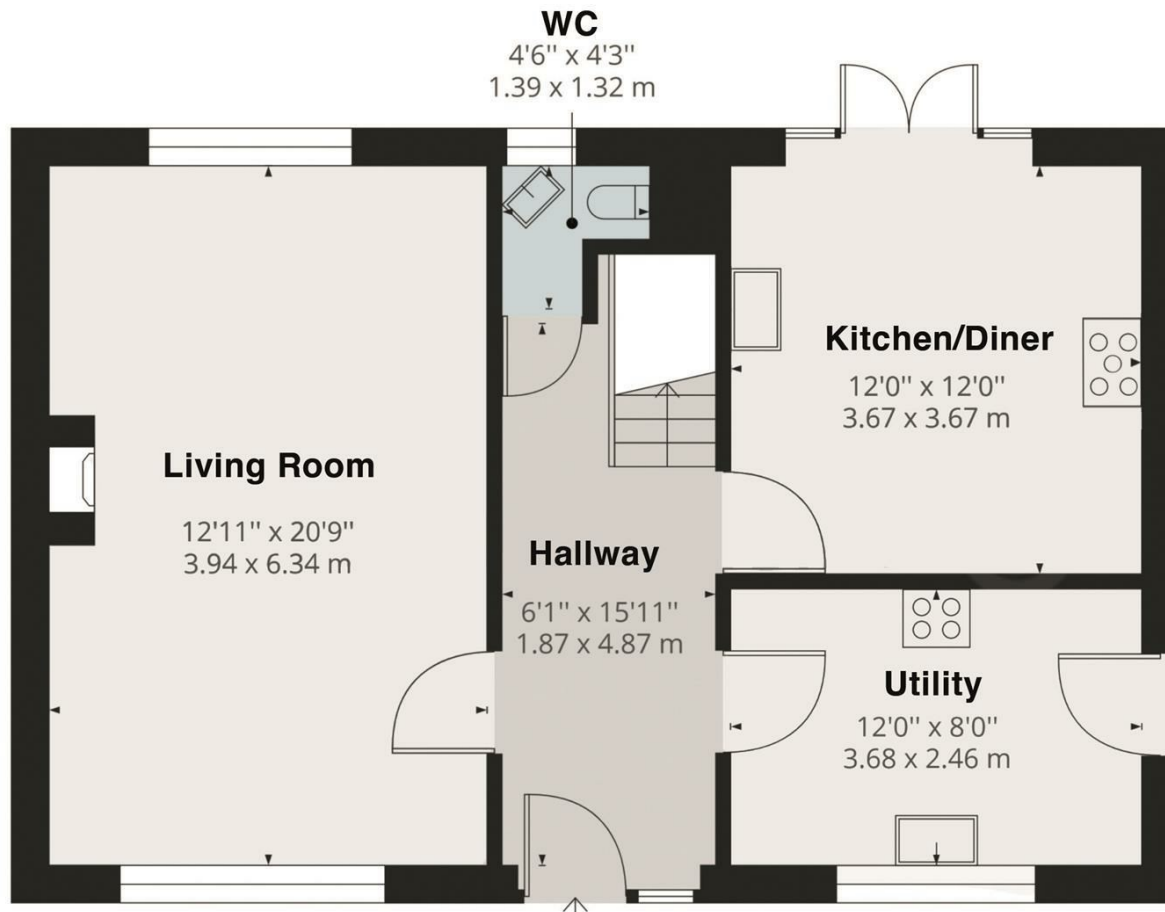
Black Lane, Whiston, ST10 2JZ
Offers In The Region Of £450,000
Council Tax Band: E



Highfield House is a very appealing, modern, 4 bed sandstone detached house, with unusually well-proportioned rooms and great outdoor space.



Open House Staffordshire



Energy Efficiency Rating		Current	Potential
Very energy efficient - lower running costs			
(92 plus)	A		
(81-91)	B		
(69-80)	C		74
(55-68)	D		
(39-54)	E		
(21-38)	F		
(1-20)	G		
Not energy efficient - higher running costs			
England & Wales		EU Directive 2002/91/EC	