



This fantastic three bedroom semi-detached home offers spacious, well-presented accommodation and is ideally located within a popular residential area, just a short distance from Chippenham town centre, the railway station and well-regarded local schools.

The property has been thoughtfully extended to create generous living space, making it an ideal choice for families, first-time buyers or those looking to move quickly thanks to the added benefit of no onward chain.

Inside, the home features a large and inviting open plan sitting / family room, perfect for relaxing or entertaining, alongside a modern kitchen designed with both style and practicality in mind. The contemporary bathroom is well-appointed, while three well-proportioned bedrooms provide comfortable accommodation.

Externally, the property enjoys a generous rear garden, offering plenty of space for outdoor living. A sheltered seating area provides the perfect spot for al fresco dining or relaxing throughout the seasons. To the front, the property

Viewing

Viewings Strictly by appointment with the sole selling agents Atwell Martin call or e-mail us today to confirm your appointment | 65 New Road, Chippenham, Wiltshire SN15 1ES

Situation - Chippenham

Chippenham itself has a wide range of amenities to include High Street retailers plus supermarkets and retail parks and, in addition, there is a leisure centre with indoor swimming pool, library, cinema and public parks. Chippenham also benefits from excellent schooling with numerous primary and three highly sought after secondary schools. For those wishing to commute there is also a regular main line rail service from Chippenham station to London (Paddington) and

the West Country and the M4 motorway is easily accessed via Junction 17 a few miles north of the town.

Property Information

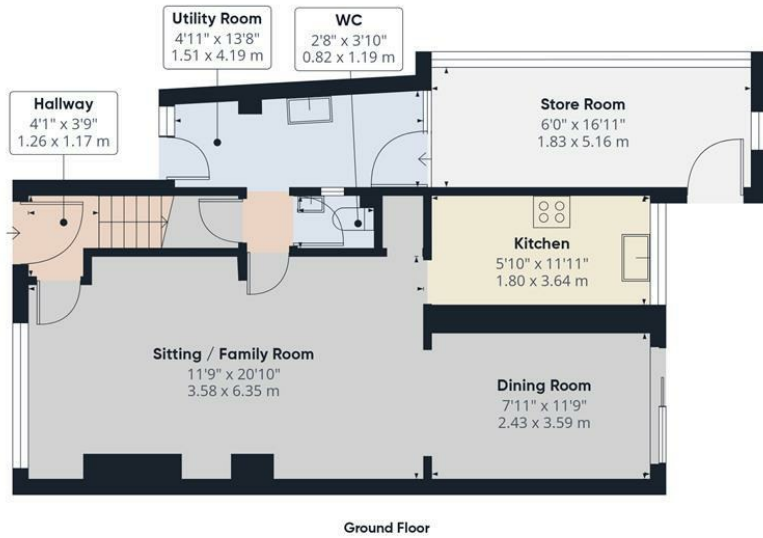
Utilities/Services - Mains Electric, Water & Drainage, Gas Central Heating

Wiltshire Council Tax - Band B (with an improvement indicator)

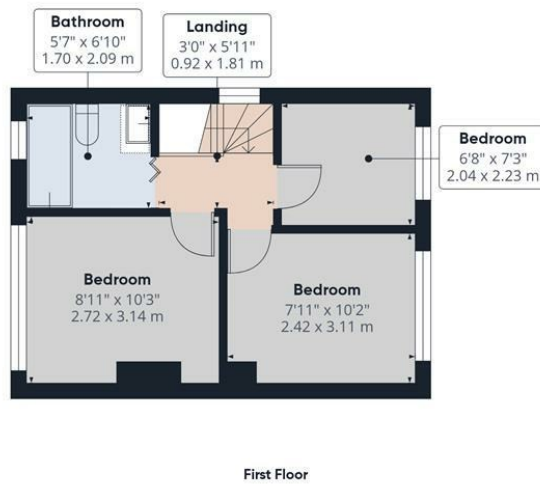
Tenure - Freehold







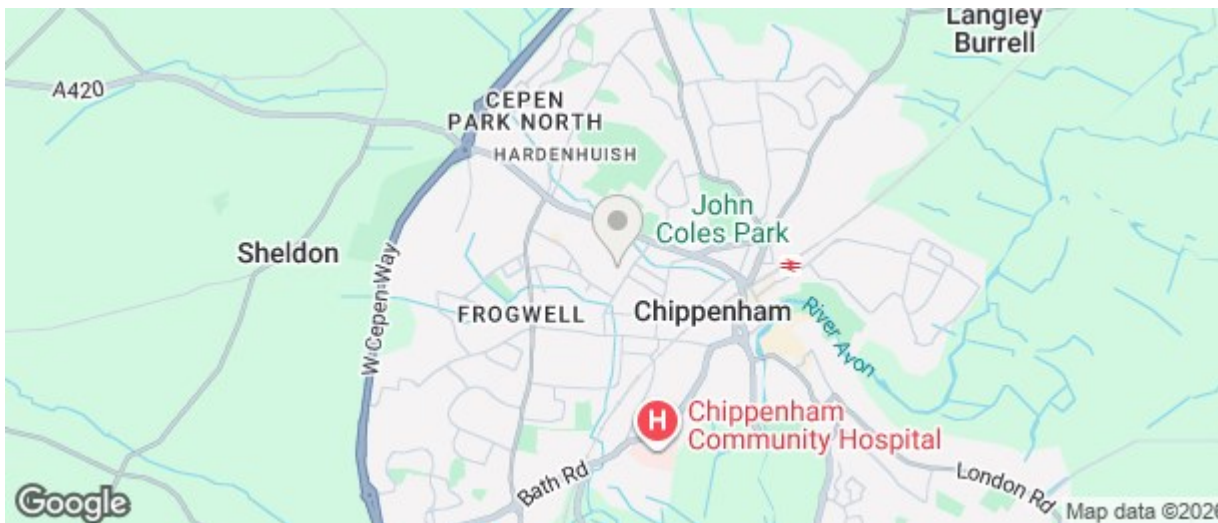
Approximate total area⁽¹⁾
 904 ft²
 84.1 m²



(1) Excluding balconies and terraces

Calculations reference the RICS IPMS 3C standard. Measurements are approximate and not to scale. This floor plan is intended for illustration only.

GIRAFFE360



Energy Efficiency Rating		
	Current	Potential
Very energy efficient - lower running costs		
(92 plus) A		
(81-91) B		
(69-80) C		
(55-68) D		
(39-54) E		
(21-38) F		
(1-20) G		
Not energy efficient - higher running costs		
	68	76
England & Wales		
Environmental Impact (CO ₂) Rating		
	Current	Potential
Very environmentally friendly - lower CO ₂ emissions		
(92 plus) A		
(81-91) B		
(69-80) C		
(55-68) D		
(39-54) E		
(21-38) F		
(1-20) G		
Not environmentally friendly - higher CO ₂ emissions		
England & Wales		

The particulars are set out as a general outline only for the guidance of intended purchasers or lessees, and do not constitute, any part of a contract. Nothing in these particulars shall be deemed to be a statement that the property is in good structural condition or otherwise nor that any of the services, appliances, equipment or facilities are in good working order. Purchasers should satisfy themselves of this prior to purchasing