



10 West Street | Hertford | SG13 8EX

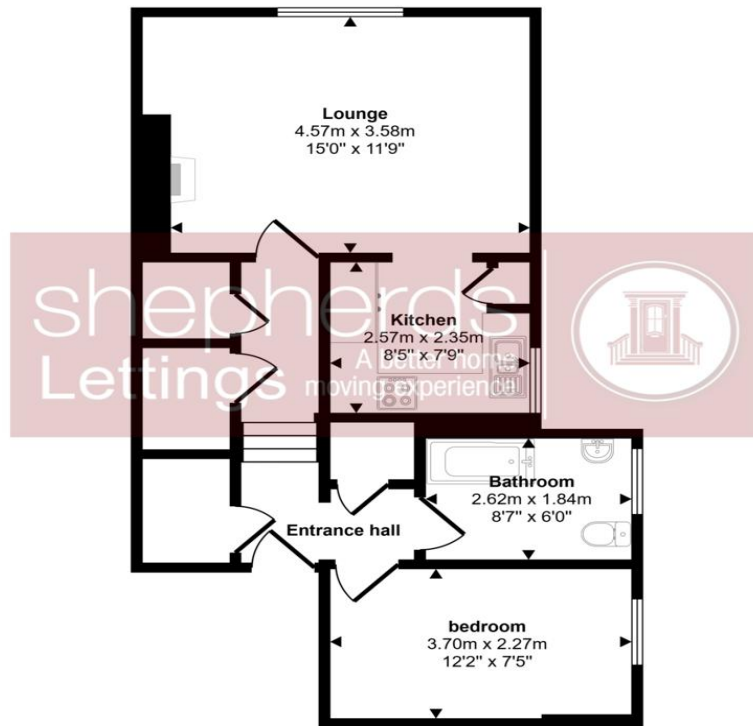
£1,250 pcm

A unique character one bedroomed first flat situated in an ideal central location within easy walk of all amenities to include rail stations. Situated in one of Hertford's most historic streets. Gas central heating, ample storage cupboards in hallway. Modern kitchen and bathrooms. One parking space, Council Tax band -C, EPC rating-D Deposit equal to one month rent

- Communal hallway
- Entrance hall
- Spacious lounge
- One bedroom
- Modern kitchen and bathroom



Approx Gross Internal Area
52 sq m / 558 sq ft



Floorplan

This floorplan is only for illustrative purposes and is not to scale. Measurements of rooms, doors, windows, and any items are approximate and no responsibility is taken for any error, omission or mis-statement. Icons of items such as bathroom suites are representations only and may not look like the real items. Made with Made Snappy 360.

Contact Details

6 Millbridge
Hertford
Hertfordshire
SG14 1PY

www.shepherdsfhertford.com
lettings@shepherdsfhertford.co.uk
01992 551955

Score	Energy rating	Current	Potential
92+	A		
81-91	B		
69-80	C		74 C
55-68	D	67 D	
39-54	E		
21-38	F		
1-20	G		

Agents Note: Whilst every care has been taken to prepare these sales particulars, they are for guidance purposes only. All measurements are approximate are for general guidance purposes only and whilst every care has been taken to ensure their accuracy, they should not be relied upon and potential buyers are advised to recheck the measurements