



**Price**  
**£240,000**

**Share of  
Freehold**

1x  1x  2x 

**Regal House, Monson  
Road, Redhill, Surrey,  
RH1**

**OVER 60?**

Secure this property  
for up to **59% less!**

**cubitt & west**  
Helping you move forwards



## Main features

- A modern apartment presented in immaculate condition throughout
- Contemporary kitchen/dining area with integrated appliances
- Great location within walking distance of Redhill train station
- Light and spacious lounge
- Direct access through patio doors to communal grounds

## Accommodation

### GROUND FLOOR

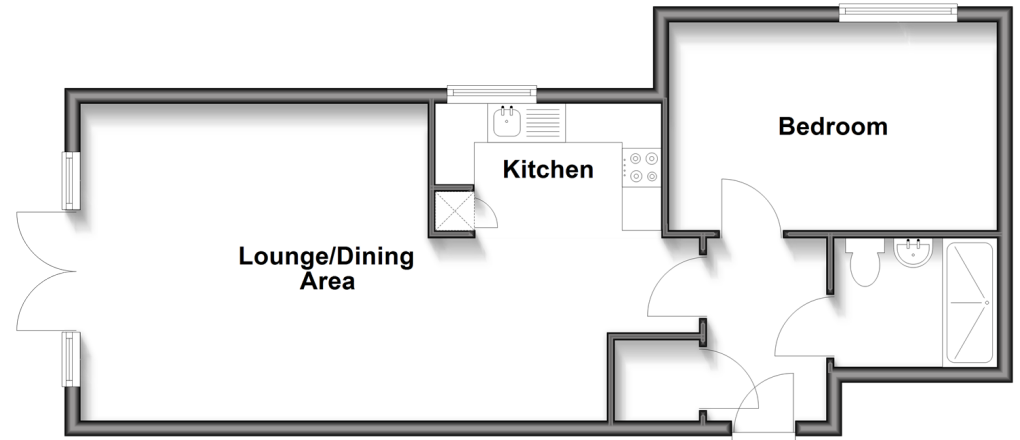
- Entrance Hall
- Lounge/Dining Area: 14'6 x 13'3 (4.42m x 4.04m)
- Kitchen: 13'3 x 9'5 (4.04m x 2.87m)
- Bedroom: 14'5 x 8'7 (4.40m x 2.62m)
- Shower Room: 6'8 x 5'4 (2.03m x 1.63m)

### OUTSIDE

- Allocated Parking
- Communal Gardens

### Ground Floor

Approx. 50.9 sq. metres (547.5 sq. feet)



Call Redhill - 01737 778866 ■ [cubittandwest.co.uk](http://cubittandwest.co.uk)

- Legal advice should be taken to verify fixtures/fittings, planning, alterations and/or lease details
- Through a Homewise Home For Life Plan people aged 60+ can secure this property for up to 59% less, by purchasing a Lifetime Lease

- Appliances & services are untested, dimensions are approximate and floor plans are not to scale



23411457/20260130/AON/JB2