

Longfield Avenue, W5

£1,699,950

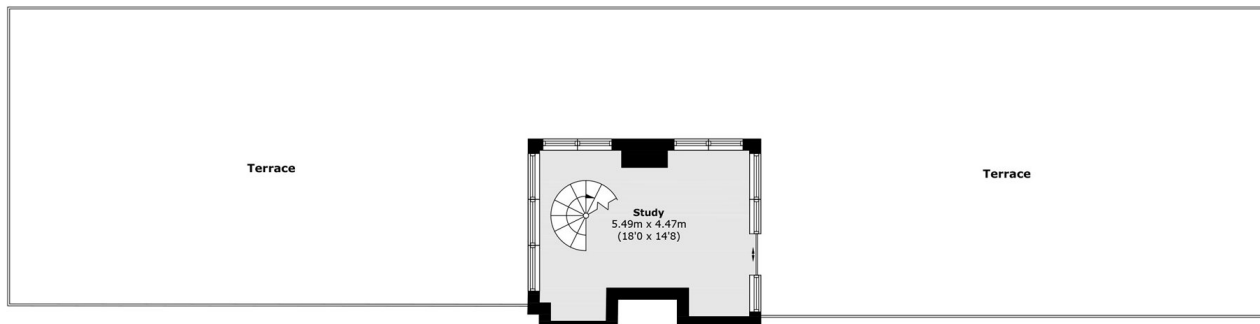
This duplex penthouse really is something special, offering an incredible amount of space along with all the little luxuries that make everyday living feel effortless. From the walk-in wardrobe and wrap-around balcony to the glass spiral staircase and private roof garden, every part of the apartment has been designed to make the most of the space and views.

Dickens Yard remains one of Central Ealing's most sought-after developments, thanks to its residents-only spa facilities, concierge service and unbeatable location moments from Ealing Broadway's shops, restaurants and transport links.

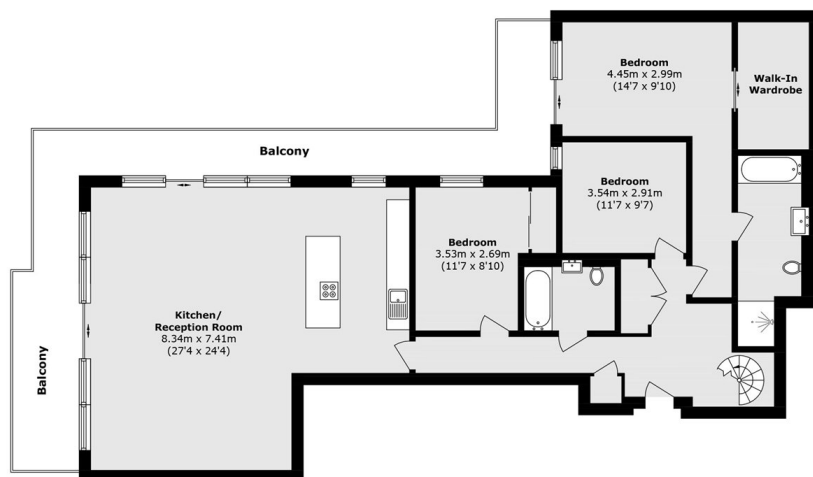
Features

- Penthouse
- Circa 1700 sqft
- Private Roof Garden
- Two Secure Parking Spaces
- 24-Hour Concierge
- Gym & Swimming Pool

Longfield Avenue, London, W5



Ninth Floor



Eighth Floor

Total area (approx): 156.3 sq. m (1682.4 sq. ft)
Balcony area (approx): 32.1 sq. m (345.5 sq. ft)
Terrace area (approx): 232.2 sq. m (2499.4 sq. ft)