



96 Basingfield Close, Old Basing – RG24 7BQ

£215,000 Leasehold

SERVICE CHARGE £2376 P/A • GROUND RENT £50 P/A • 99 YEAR LEASE • ALLOCATED PARKING • 2 BEDROOMS • EPC D • COUNCIL TAX C

01256 321777

www.thepropertyexplorer.co.uk

the property
explorer

EXPLORER // We are delighted to offer to the market this much improved two bedroom 2nd floor apartment pleasantly situated on a select residential no through road in the highly regarded Village of Old Basing. Offered in immaculate condition throughout, benefits of note include luxury refitted kitchen/breakfast, luxury refitted bathroom, spacious lounge/dining room, and allocated parking. Council Tax band: C

Tenure: Leasehold

EPC Energy Efficiency Rating: D



- SERVICE CHARGE £2376 P/A
- GROUND RENT £50 P/A
- 99 YEAR LEASE
- ALLOCATED PARKING
- 2 BEDROOMS
- EPC D
- COUNCIL TAX C

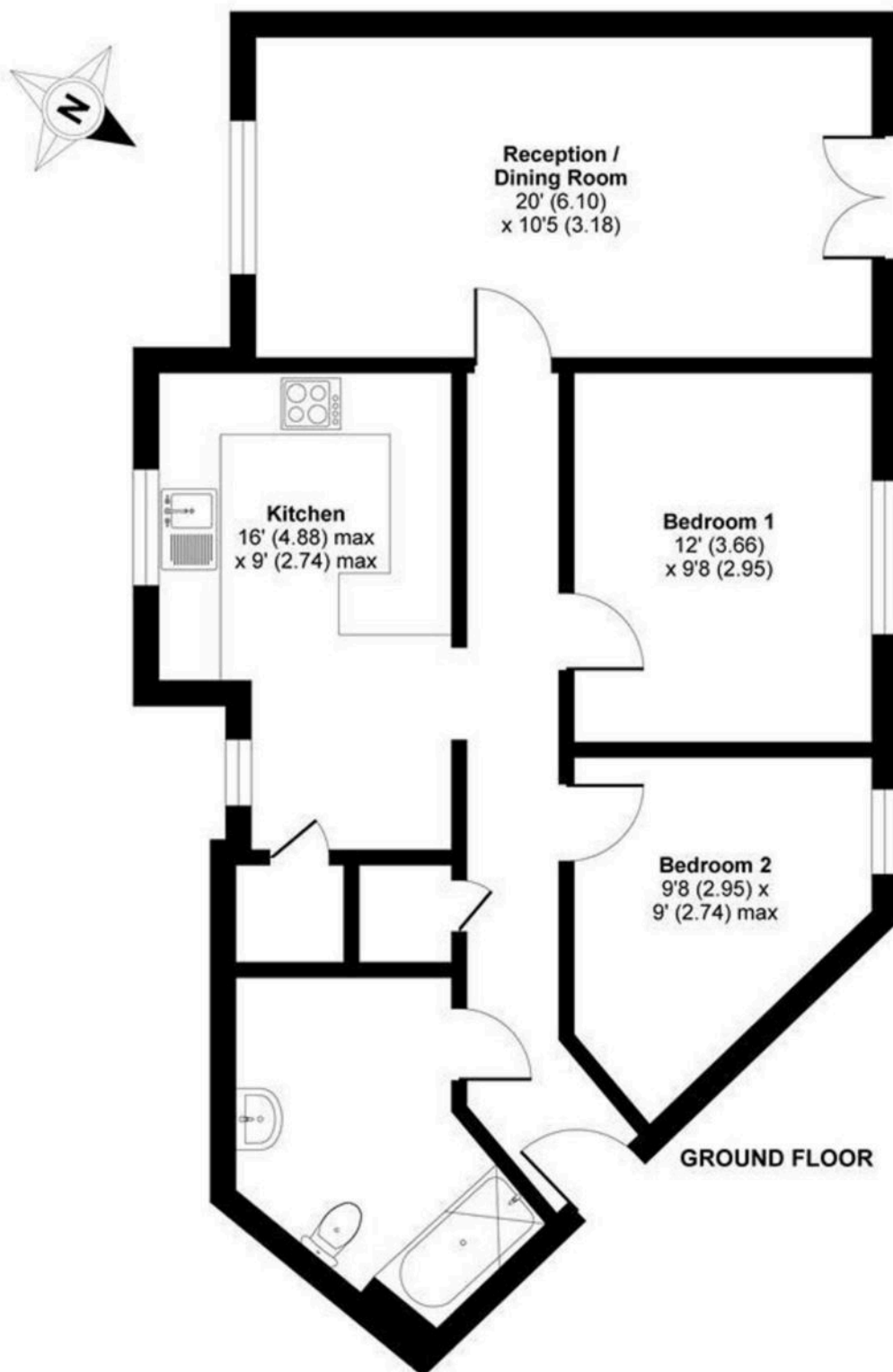




Basingfield Close, Old Basing, Basingstoke, RG24

Approximate Area = 774 sq ft / 72 sq m

For identification only - Not to scale



Floor plan produced in accordance with RICS Property Measurement Standards incorporating International Property Measurement Standards (IPMS2 Residential). © nichecom 2020.
Produced for Property Explorer. REF: 664147

You can include any text here. The text can be modified upon generating your brochure.