



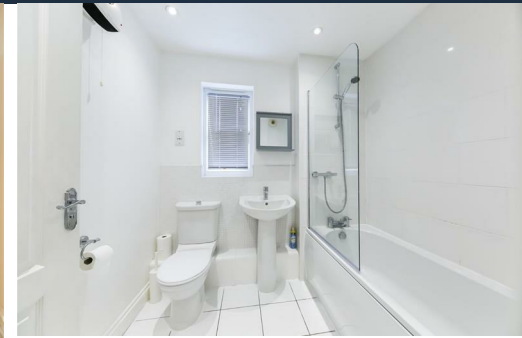
# Alexander Hudson Estates

---

Sales Particulars

# Alexander Hudson Estates

Hawks Edge, West Moor, NE12

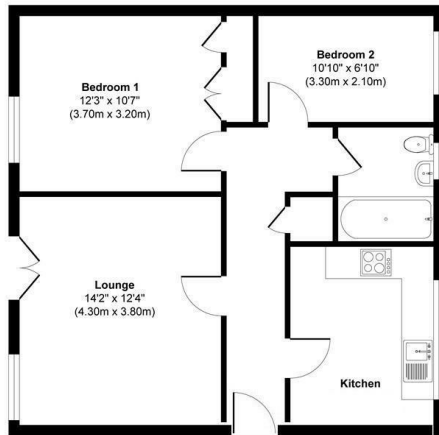


# The Property

Alexander Hudson Estates introduces this bright and airy, two-bedroom ground floor apartment situated in the popular development of Hawks Edge in Westmoor. Close-by to local amenities including schools, supermarkets, shops and leisure facilities along with excellent transport links across the region.

Offered to the market with no onward chain, the property briefly comprises of an entrance hallway, living room, open plan kitchen diner, bathroom and two double bedrooms. Externally the property is well maintained and benefits from a private parking bay.

Close to Gosforth, Balliol, and Quorum Business Parks, with the A1 and A19 easily accessible for those commuting further afield. West Moor is also adjacent to Killingworth, home to The Killingworth Centre (anchored by a large Morrison's supermarket), and the White Swan Centre, which includes a Doctors' surgery, an activity hall, a cafe and Killingworth Library. The Lakeside Centre is also close by, a leisure centre which offers a swimming pool, indoor sports courts, a gym and even a soft play for children.



Leasehold  
Council Tax: B  
EPC Rating: 69





---

Alexander Hudson Estates  
The Printworks  
20 Arrow Close  
NE12 6QN

0191 268 7433  
[sales@alexanderhudson.co.uk](mailto:sales@alexanderhudson.co.uk)