

TG

SALES & LETTINGS



Winston Road, Churchdown, Gloucester
Gloucestershire GL3 2QZ

£350,000

- Village Location
- Generous Plot
- Scope to Extend
- Double Garage and Workshop
- Ample Off Road Parking
- Turn Key Family Home
- Close to Local Schools and Shops
- Westerly Facing Rear Garden

The Property

TG Sales are delighted to present this attractive three-bedroom semi-detached family home, ideally positioned in the highly sought-after village of Churchdown. Enjoying a convenient location within easy walking distance of well-regarded schools, local shops, and everyday amenities, this property perfectly combines comfort, style, and practicality.

Beautifully presented throughout, the home is offered in excellent decorative order and has been thoughtfully maintained by the current owners. The accommodation is bright, welcoming, and well-proportioned, featuring a stylish modern fitted kitchen ideal for family living and entertaining, alongside a contemporary bathroom finished to a high standard.

Upstairs, there are three generous bedrooms, each offering flexible living space well suited to growing families, guests, or those requiring a home office.

Externally, the property continues to impress, with ample off-road parking at the front and a large double garage, providing excellent parking, storage, or workshop potential. The overall layout offers both convenience and versatility, making it ideal for modern-day-to-day living. A fantastic opportunity to acquire a well-presented family home in a popular and established location. Early viewing is highly recommended.



Situation

Situated just a short distance from the charming village centre of Churchdown, this home is within easy reach of a wealth of local amenities. The area offers a variety of shops, pubs, and takeaways, along with essential services, including a post office, a doctor's surgery, a veterinary clinic, and a community centre. Families will also appreciate the close proximity to well-regarded schools and local churches, making this a truly convenient and desirable location.

Directions

SATNAV postcode GL3 2QZ

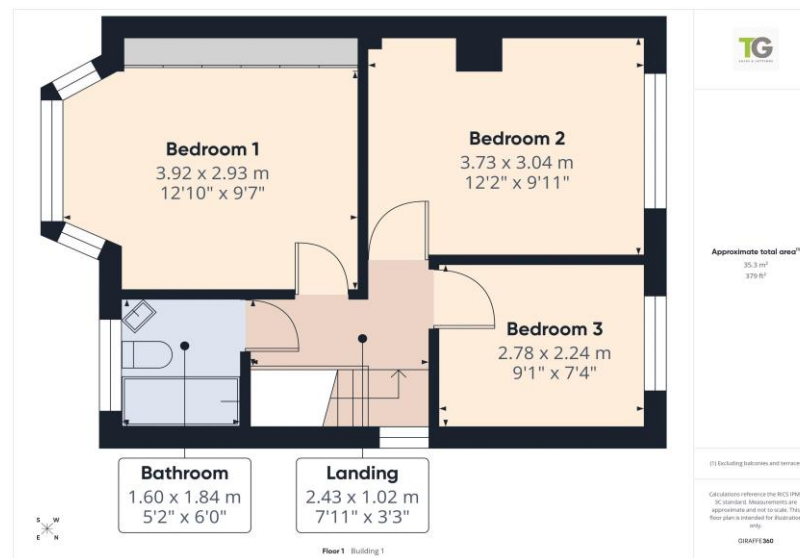
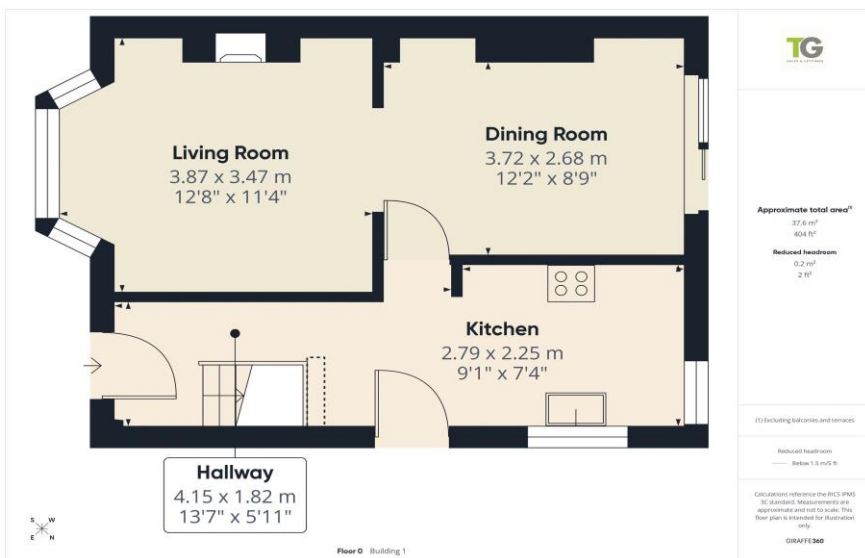
Tenure Freehold

Local Authority Gloucester

Services Electric, Mains Gas, Mains Drainage and Water are all believed to be connected to the property.

Council tax band C





Head Office
TG Sales & Lettings
48 Stroud Road
Gloucester
Gloucestershire
GL1 5AJ
Tel: 01452 311776
Email: info@tgres.co.uk
Website: www.tgres.co.uk



| Score | Energy rating | Current | Potential |
|-------|---------------|---------|-----------|
| 92+ | A | | |
| 81-91 | B | | 84 |
| 69-80 | C | 71 | |
| 55-68 | D | | |
| 39-54 | E | | |
| 21-38 | F | | |
| 1-20 | G | | |

T G Sales & Lettings and any parties they are acting for hereby give you notice that: These details are for guidance only and cannot guarantee the accuracy of any description, dimension, condition or any required permission for occupation and use. It is not company policy to test any services or appliances in properties offered for sale and these should be verified by the purchaser's solicitors. T G Sales & Lettings will not be liable for any loss arising from the use of these details. No responsibility is taken for any errors, omissions or misstatements within these particulars. It should not be assumed that the property has all the necessary planning, building regulation or other consents. These particulars do not form any part of any offer or contract and must not be relied upon as statements or representations of fact. Buyers are advised to seek advice from their legal representation. T G Sales & Lettings is a limited liability partnership registered in England and Wales. Registered Number: 9763381 Registered Office: 48 Stroud Road, Gloucester, Gloucestershire, GL1 5AJ.