



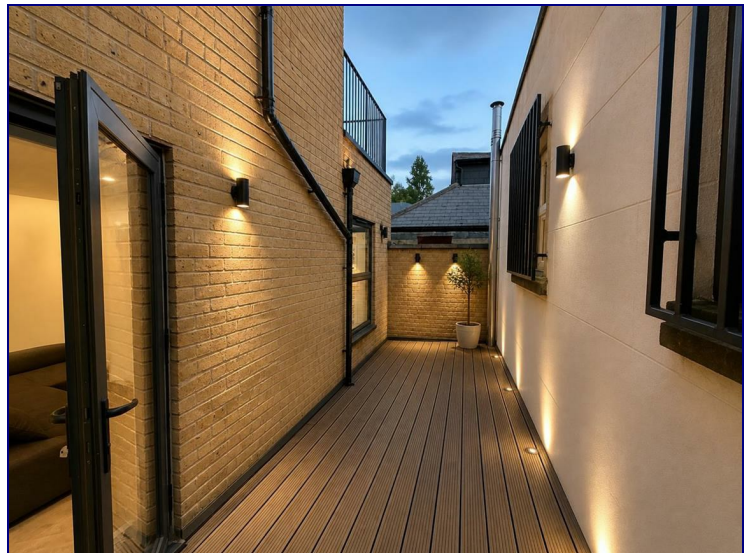
www.kings-group.net

488 Bethnal Green Road

London E2 0EA

Tel: 0207 613 2121

233 Mile End Road, London, E1 4AA




£1,975 Per Month


Arranged on the first floor, this fantastic one-bedroom flat offers generous living space throughout, complemented by stylish modern interiors and an abundance of natural light. The property boasts a well-proportioned reception room, a contemporary fitted kitchen, a spacious double bedroom, and a sleek bathroom, making it ideal for both single professionals or a couple.

Ideally located on Mile End Road, the flat benefits from immediate access to a wide selection of local amenities including vibrant bars, restaurants, cafés, and convenience stores. Excellent transport links are within easy reach, with nearby stations providing swift connections into Central London and beyond.

Residents can also enjoy close proximity to the open green spaces of Stepney Green and Mile End Park, perfect for outdoor activities and leisurely walks.



| Energy Efficiency Rating | | |
|--|----------------------------|---|
| | Current | Potential |
| <i>Very energy efficient - lower running costs</i> | | |
| (92 plus) A | | |
| (81-91) B | | |
| (69-80) C | | |
| (55-68) D | | |
| (39-54) E | | |
| (21-38) F | | |
| (1-20) G | | |
| <i>Not energy efficient - higher running costs</i> | | |
| England & Wales | EU Directive 2002/91/EC |  |

| Environmental Impact (CO ₂) Rating | | |
|---|----------------------------|---|
| | Current | Potential |
| <i>Very environmentally friendly - lower CO₂ emissions</i> | | |
| (92 plus) A | | |
| (81-91) B | | |
| (69-80) C | | |
| (55-68) D | | |
| (39-54) E | | |
| (21-38) F | | |
| (1-20) G | | |
| <i>Not environmentally friendly - higher CO₂ emissions</i> | | |
| England & Wales | EU Directive 2002/91/EC |  |

