

Windsor Street, N1

£750,000

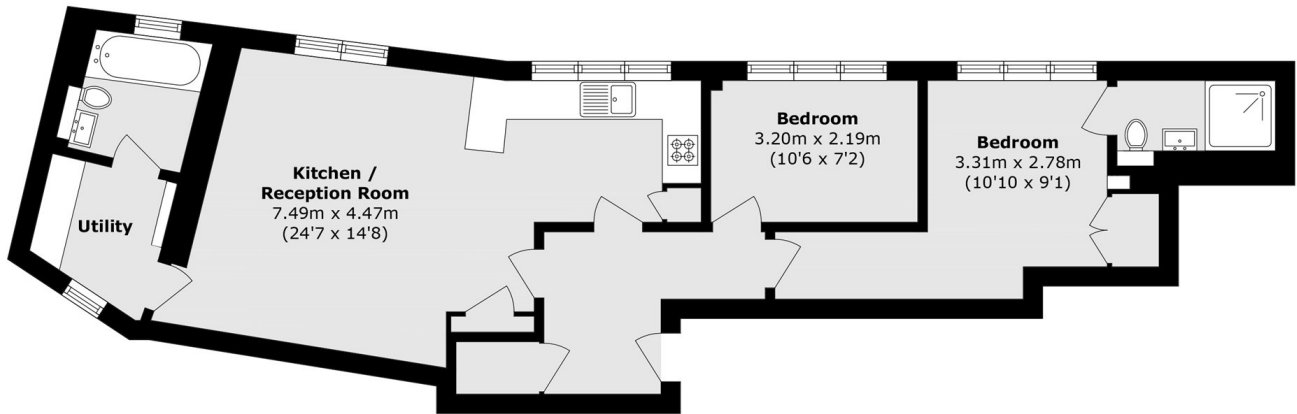
This two bedroom, two bathroom warehouse conversion is centrally located in Angel on a quiet side street. The property boasts a large open-plan living kitchen with modern appliances, a utility room and a principle en-suite bedroom. This property is being sold chain free.

Windsor street is a quiet side street off Essex Road. Angel (northern line) is 0.5 mi providing easy access all over London.

Features

- Two Bedrooms
- Two Bathrooms
- Open-Plan
- Print Factory Conversion
- Chain Free

Windsor Street, London, N1



Total area (approx.): 70.0 sq. m (753.4 sq. ft)