



Spencer Drive, Hampstead Garden Suburb, N2

Monthly Rental Of £10,200



800 Finchley Road, Hampstead Garden Suburb, London, NW11 7TJ

020 8458 5000

sales@litchfields.com

www.litchfields.com

Offices also in Highgate



 litchfields

A fantastic Six bedroom detached family residence set over 3 floors situated in this prime south side road. This spacious home offers excellent family accommodation and has just undergone a light refurbishment with a full internal redecoration throughout, approx. 2,811 Sq Ft. (261 Sq M). Featuring a stunning double reception room which opens up to the family room and very modern fully fitted kitchen, TV/Study. Sumptuous principal bedroom suite with luxury oversized en-suite bathroom, 5 further bedrooms, 2 family bathrooms, guest cloakroom. There is a large rear garden with patio and driveway for 2/3 cars. Early viewing is strongly advised! Unfurnished on a Long Let. EPC=E



- 6 bedroom detached house
- 3 reception rooms
- 3 bathrooms (1 en suite)
- Kitchen/breakfast/family room
- Guest cloakroom
- Wood floors and doors
- Large rear garden and patio
- Osp x 2 cars
- Close market place shops
- Close heath extension
- Unfurnished



6



3



3

EPC

E



 litchfields



 litchfields



 litchfields




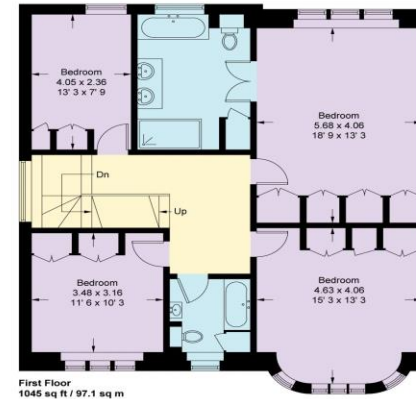
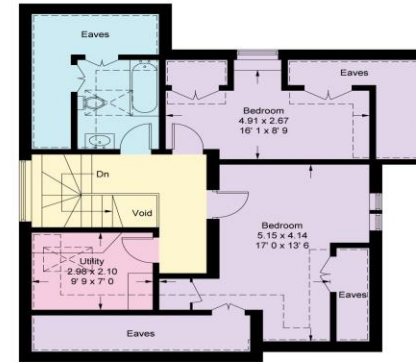
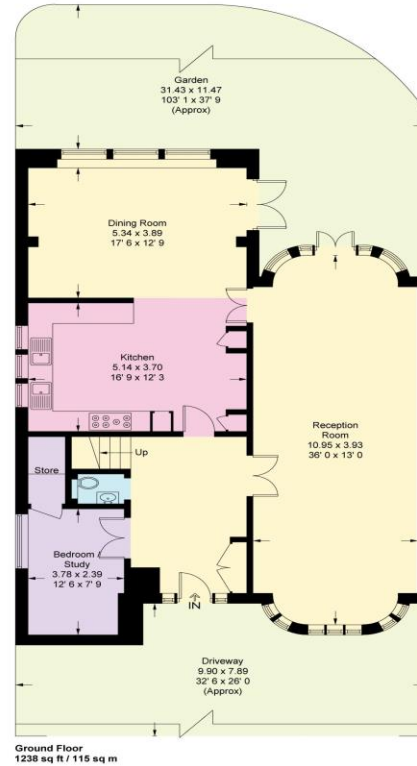


Spencer Drive

Approximate Gross Internal Area = 2719 sq ft / 252.6 sq m
(Excluding Reduced Headroom / Eaves / Void)
Reduced Headroom / Eaves = 361 sq ft / 33.6 sq m
Total = 3080 sq ft / 286.2 sq m



 = Reduced headroom below 1.5m / 5'0"



This plan is not to scale and must be used as layout guidance only. All measurements and areas are approximate and should not be relied upon to provide accurate information. This plan must not be relied upon when making property valuations, design considerations or any other such relevant decisions. We accept no responsibility or liability (whether in contract, tort or otherwise) in relation to any loss whatsoever arising from or in connection with any use of this plan or the adequacy, accuracy or completeness of it or any information within it.