



## Long Lane, SE1

### £600,000

A highly attractive south-facing apartment with a very generous open plan living space and modern kitchen, with ample room for dining and additional seating, two spacious double bedrooms, two bathrooms, plus additional built-in storage. Sold Chain Free. Offers in excess of £600,000.

Coach House Mews is enviably positioned on Long Lane, just moments from the independent cafés, acclaimed restaurants, and boutique shops of Bermondsey Street. London Bridge station, Borough Market, and the many cultural attractions of the South Bank are all close by, placing the best of London living right on your doorstep.

### Features

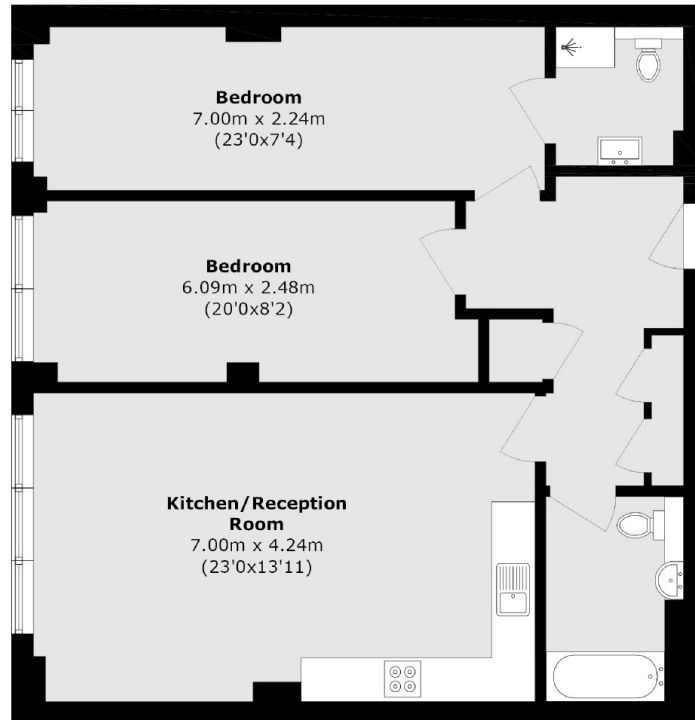
- Offers in excess of £600,000
- Almost 900 sq Ft
- South-Facing Apartment
- Two Double Bedrooms
- Two Bathrooms
- Secure Entry & Lift Access
- Very Central Location
- Chain Free Sale



**Long Lane, SE1**



# Long Lane, London, SE1



Total area (approx.): 82.3 sq. m (885.9 sq. ft)