

To Let ·

Burlington Road New Malden, KT3

Outstanding Panoramic views of London from the comfort of your own home at higher floor level! A spacious one bedroom brand new apartment with Gym & Yoga Studio & Excellent Transport Links available now

£1,900 pcm

1 Bedroom

570 sqft (53 sqm)

EPC B

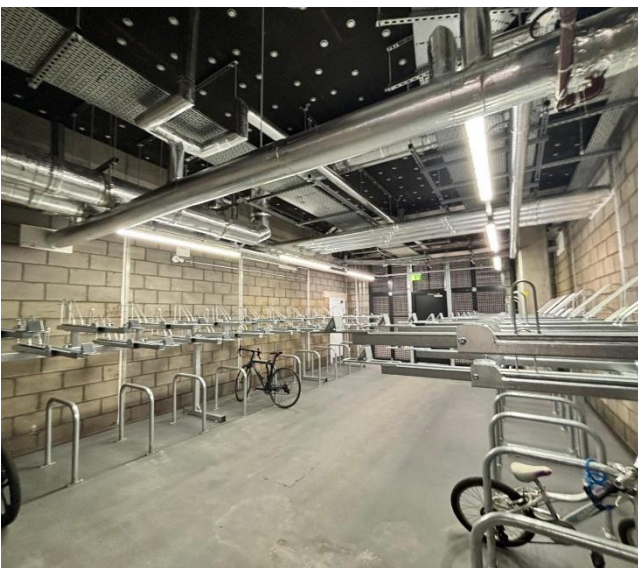
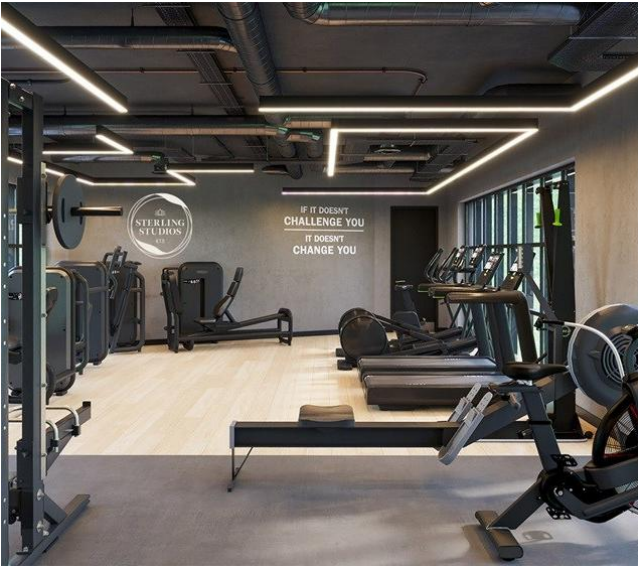
Unfurnished



Key features

- ◆ 6th Floor with two lift access
- ◆ Large Double Bedroom Upgraded with built in wardrobe
- ◆ Residents` gym & yoga studio on site
- ◆ Landscaped communal gardens
- ◆ Private balcony with exceptional views
- ◆ EPC Rating B
- ◆ Brand-new desinger kitchen with integrated high-end appliances
- ◆ 10-minute walk to Motpshur Park- waterloo in 24 mins, Wimbledon 7, Clapham Junction 15
- ◆ Video intercom & high security throughout lobby main door and car park
- ◆ Dedicated Bike Storage





XXXXXXXXXXXXXXXXXXXX

SIXTH FLOOR



TOTAL FLOOR AREA: 685 sq ft (64.4 sq m) approx.
 Whilst every effort has been made to ensure the accuracy of the floorplan contained here, measurements of doors, windows, rooms and any other items are approximate and no responsibility is taken for any error, omission or mis-statement. This plan is for illustrative purposes only and should be used as such by any prospective purchaser. The services, systems and appliances shown have not been tested and no guarantee as to their operability or efficiency can be given.
 Made with Metropix 02026

Flat

A rare opportunity to rent a premium sixth-floor apartment in the highly desirable Sterling Place development, offering spectacular uninterrupted panoramic views, a large private balcony, exclusive residents` facilities, and excellent transport connections into Central London.

This larger than average one bedroom apartment has been finished to an exceptional standard and benefits from a prime elevated position with no buildings obstructing the outlook. Floor to ceiling windows throughout maximise natural light and showcase the stunning views from both the living area and bedroom.

The spacious open plan living and dining area creates a bright, contemporary space for relaxing, entertaining, or working from home. The brand new designer kitchen features integrated high end appliances, sleek cabinetry, and premium finishes.

The generous double bedroom offers excellent storage potential and floor to ceiling glazing, creating a calm and light filled retreat. A stylish modern bathroom, and integrated air filtration system further enhance the comfort and practicality of the home.

The standout feature is the impressive private balcony, providing completely open views and the landscaped gardens below. Whether enjoying morning coffee, outdoor dining, or evening sunsets, the balcony delivers a unique lifestyle experience rarely available in comparable properties.

Viewings are highly recommended. Security deposit £2,192 , Council Tax TBC, EPC B

Rent	£1,900 pcm
Security deposit	£2,192.00 (5 weeks' rent)
Available from	Now
Furnishing	Unfurnished
EPC rating	B
Council tax	To Be Confirmed · London Borough of Merton

Arrange a viewing

Viewings are by appointment – early enquiry advised

020 8949 0094

mail@grovesresidential.com



Groves Residential (UK) Ltd Registered in England & Wales company number 816 2455 Vat no: 996646252.