



Guide Price
£375,000

Freehold

3x  1x  2x 

**Norton Crescent,
Tonbridge, Kent, TN10**

Wards
Helping you move forwards



Main features

- Chain free
- Good commuter links and prime location for schools
- Close to local amenities
- Newly plastered and decorated throughout and new carpets have been added
- Three well proportioned bedrooms

Accommodation

GROUND FLOOR

Hallway
 Lounge: 14'0 x 10'8 (4.27m x 3.25m)
 Diner: 10'8 x 10'8 (3.25m x 3.25m)
 Kitchen: 10'5 x 9'10 (3.18m x 3.00m)
 Office: 9'11 x 6'11 (3.02m x 2.11m)

FIRST FLOOR

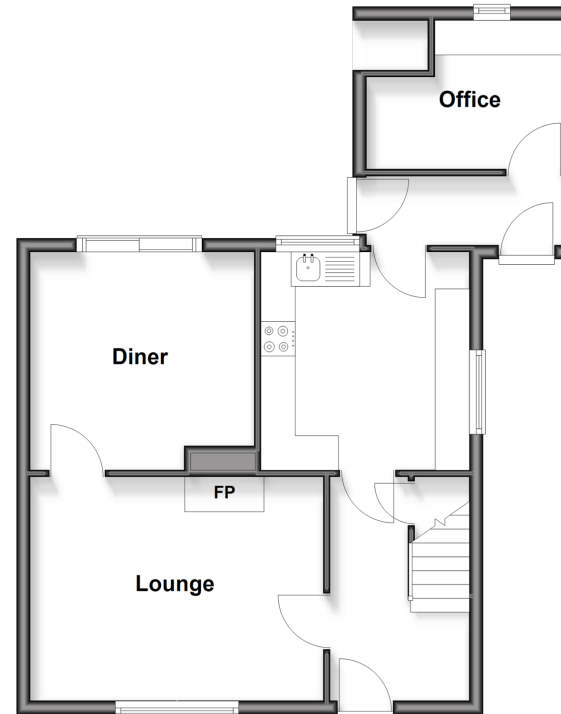
Landing
 Bedroom 1: 13'0 x 10'8 (3.97m x 3.25m)
 Bedroom 2: 11'0 x 10'3 (3.36m x 3.13m)
 Bedroom 3: 9'8 x 7'5 (2.95m x 2.26m)
 Bathroom: 7'6 x 5'5 (2.29m x 1.65m)

OUTSIDE

Font and Rear Garden

Ground Floor

Approx. 51.2 sq. metres (551.4 sq. feet)



First Floor

Approx. 41.7 sq. metres (448.4 sq. feet)

