



5 Bedrooms | 2 Bathrooms | 3 Reception Rooms

Grove Wood Hill | Coulsdon | CR5 2EL

£4,360

LOFT

Grove Wood Hill | Coulsdon | CR5
2EL
£4,360

- Immaculately presented detached home
- Large driveway for multiple cars and mature rear garden with patio and lawn
- Envious open plan kitchen area with bi-fold doors and island
- Modern kitchen with high quality integrated appliances
- Hard flooring throughout the sitting and dining room
- Cosy snug room- perfect for kids
- Garage with electric door and utility area
- Five great size bedrooms, spread across two floors with en-suite to the primary bedroom
- Sought after road, ideally situated for great schools and transport links



Designed beautifully with high quality throughout and an abundance of space on offer!



Ground Floor

Porch

Sitting Room

29'2 x 23'4 (8.89m x 7.11m)

Dining Room

23'4 x 10'4 (7.11m x 3.15m)

Kitchen/Breakfast Room

Snug/Play Room

First Floor

Landing

Bedroom 1

14'9 x 14'7 (4.50m x 4.45m)

Dressing Area

En-suite

Bedroom 2

Bedroom 3

14'11 x 10'6 (4.55m x 3.20m)

Bedroom 4

14'1 x 13'8 (4.29m x 4.17m)

Family Bathroom

Second Floor

Bedroom 5

15'9 x 14'7 (4.80m x 4.45m)

Outside

Driveway

Garage

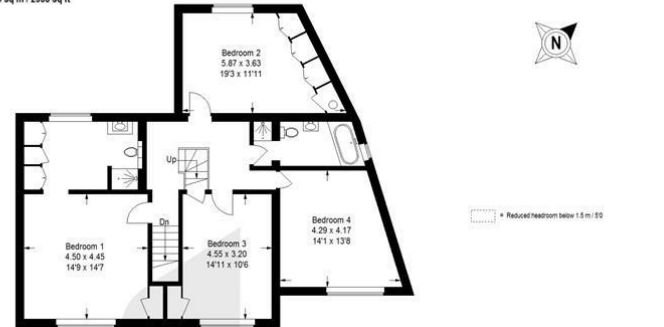
16'4 x 15'5 (4.98m x 4.70m)

Rear Garden

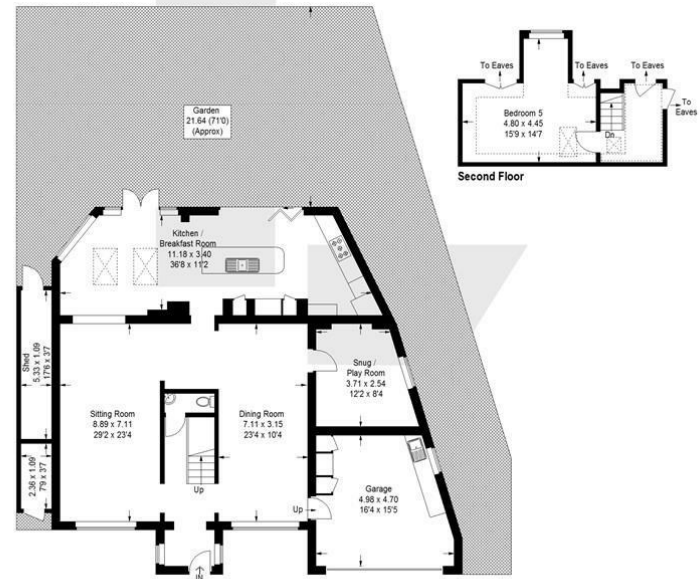


Grove Wood Hill, CR5

Approximate Gross Internal Area
(Including Garage / Excluding Shed)
272.5 sq m / 2933 sq ft



First Floor



Ground Floor

This plan is for layout guidance only. Not drawn to scale unless stated. Windows and door openings are approximate. Whilst every care is taken in the preparation of this plan, please check all dimensions, shapes and compass bearings before making any decisions reliant upon them. (ID1256088)

EPC Rating: D

23a High Street
Purley
Surrey
CR8 2AF
0208 660 8070
hello@loft-estates.co.uk