



25 Porter Square, Grantham
Grantham

£125,000

DavidGrace





25 Porter Square

Grantham, Grantham

A lovely two-bedroom second-floor flat in the popular Springfield Road estate, offering a spacious lounge, modern kitchen, two double bedrooms, parking, loft storage, and strong rental potential.

Council Tax band: A

Tenure: Leasehold

EPC Energy Efficiency Rating: C

EPC Environmental Impact Rating: B

- First-Time Buyer or Investor
- Great Second Floor Flat in Grantham
- Strong 6.72% Yield Potential
- Fitted Kitchen and Spacious Living Room
- Full Part-Boarded Loft - Great for Storage
- 2 Double Bedrooms
- Bedroom 1 with Fitted Wardrobes
- Modern Family Bathroom
- Allocated Parking Space
- EPC - tbc



Entrance Hall

Living Room

15' 1" x 12' 6" (4.60m x 3.80m)

Kitchen

10' 6" x 6' 3" (3.20m x 1.90m)

Bedroom 1

14' 1" x 8' 6" (4.30m x 2.60m)

Bedroom 2

11' 6" x 7' 3" (3.50m x 2.20m)

Bathroom





ALLOCATED PARKING

OFF STREET

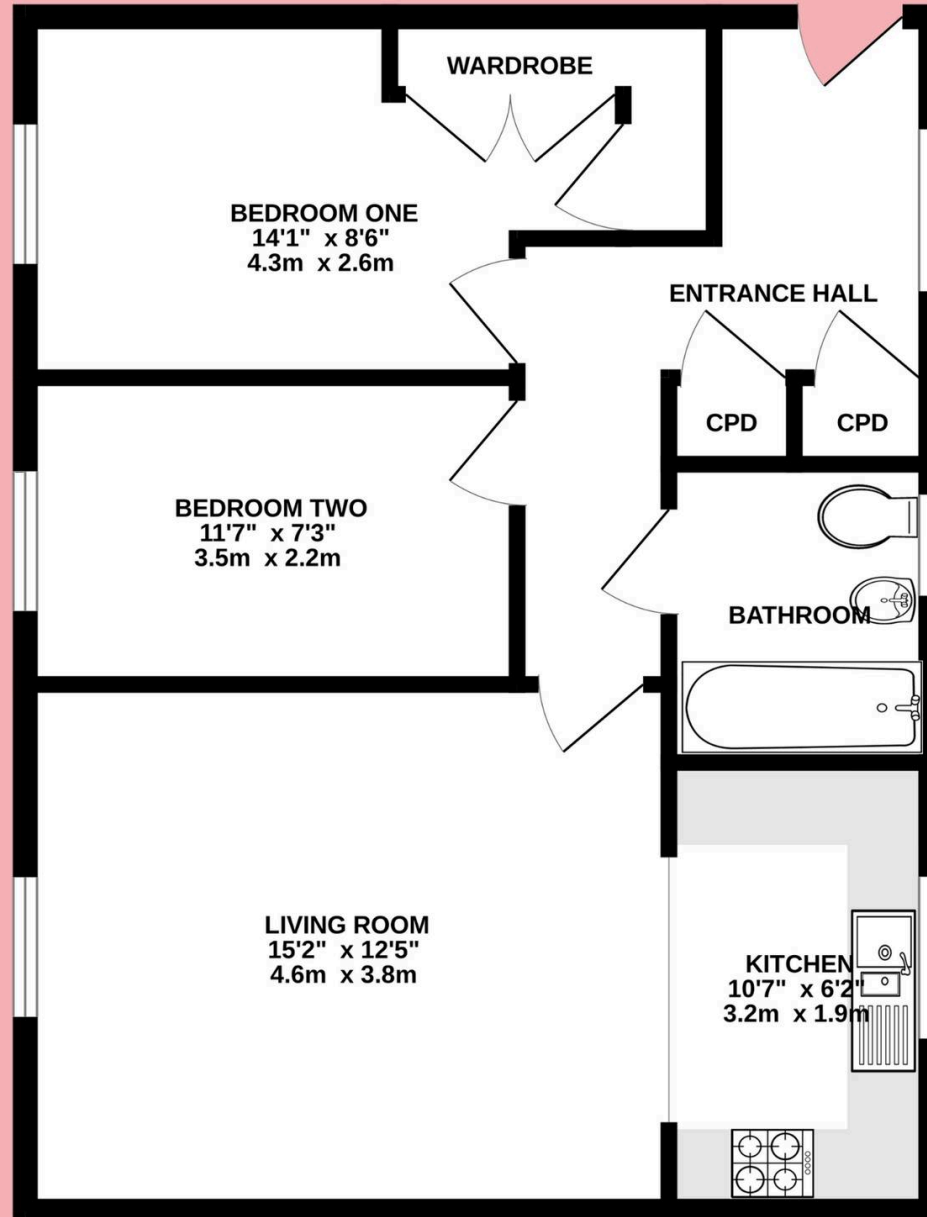


Porter Square, Grantham

Approx Internal area: 599.5sq ft/ 55.7 m²

DavidGrace

A NEWTON FAMILY ESTATE AGENCY





David Grace Estate Agents

71 High Street, Grantham - NG31 6NR

01476 833833 • sell@davidgrace.co.uk • www.davidgrace.co.uk

DavidGrace